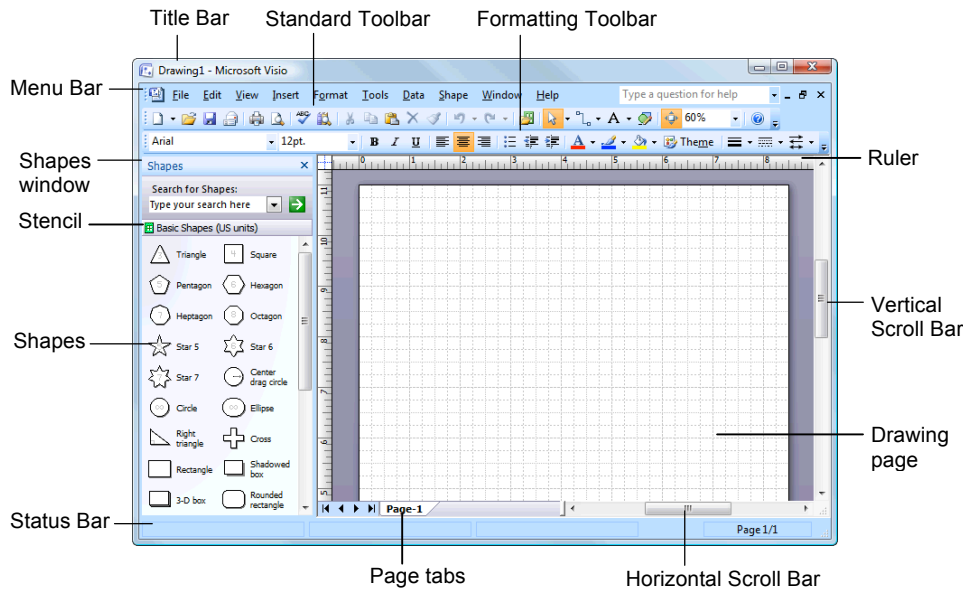


Microsoft®  
**Visio 2007**  
 Quick Reference Card

**Visio 2007 Workspace**

**Keyboard Shortcuts**



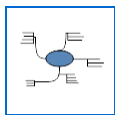
Actual Size	<Ctrl> + <Shift> + <I>
Align Shapes	<F8>
Bring to Front	<Ctrl> + <Shift> + <F>
Send to Back	<Ctrl> + <Shift> + <B>
Cascade	<Alt> + <F7>
Cut	<Ctrl> + <X>
Copy	<Ctrl> + <C>
Duplicate	<Ctrl> + <D>
Field	<Ctrl> + <F9>
Fill	<F3>
Flip Horizontal	<Ctrl> + <H>
Flip Vertical	<Ctrl> + <J>
Toggle Glue	<F9>
Group	<Ctrl> + <G>
Ungroup	<Ctrl> + <Shift> + <U>
Display Help	<F1>
Insert Hyperlink	<Ctrl> + <K>
Line	<Shift> + <F3>
Macros	<Alt> + <F8>
New Drawing	<Ctrl> + <N>
Open	<Ctrl> + <O>
Close File	<Ctrl> + <F4>
Full Screen	<F5>
Print Preview	<Ctrl> + <F2>
Redo	<Ctrl> + <Y>
Undo	<Ctrl> + <Z>
Repeat	<F4>
Find	<Ctrl> + <F>
Rotate Left	<Ctrl> + <L>
Rotate Right	<Ctrl> + <R>
Save	<Ctrl> + <S>
Save Workspace	<Alt> + <F12>
Toggle Snap	<Shift> + <F9>
Snap and Glue	<Alt> + <F9>
Spelling	<F7>

**The Getting Started Window**

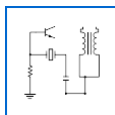
- New in Visio 2007 is the **Getting Started** window, which appears every time you open the Visio 2007 program. Here you can browse template categories, access the Recent Templates list, and preview sample diagrams (Professional edition only).
- The Getting Started window appears by default every time you open the Visio 2007 program. You can also access this window by selecting **File** → **New** → **Getting Started** from the menu.

**Diagram Templates**

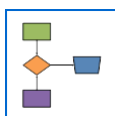
- There are eight template categories and over 50 different diagram templates in Visio 2007.
- A **template** contains everything you need to create a specific type of drawing. Each template comes with its own set of stencils, shapes and menus related to the type of diagram you are creating.



**Business:** Organize various aspects of a business with templates that organize finances, cause and effect, workflow, and more. **Templates:** Brainstorming Diagram, Work Flow Diagram, PivotDiagram, etc.



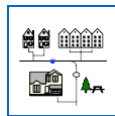
**Engineering:** Create diagrams for basic and advanced electrical systems, pneumatic or hydraulic systems, and assembly instructions. **Templates:** Basic Electrical, Part and Assembly Drawing, Process Flow Diagram, etc.



**Flowchart:** Flowcharts are visual representations of a process. **Templates:** Basic Flowchart, Cross Functional Flowchart, Data Flow Diagram, etc.



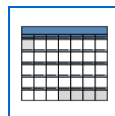
**General:** Create simple flowcharts and diagrams. **Templates:** Basic Diagram, Basic Flowchart, Block Diagram.



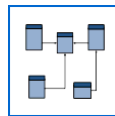
**Maps and Floor Plans:** Use to assemble directional maps, floor plans, building plans, and more. **Templates:** Directional Map, Floor Plan, HVAC Plan, Security and Access Plan, etc.



**Network:** Diagram an organization's network (including the cabling and physical hardware), Web site, or personnel directory. **Templates:** Basic Network Diagram, Conceptual Web Site, Rack Diagram, etc.



**Schedule:** Create calendars, progress charts and timelines. **Templates:** Calendar, Gantt Chart, PERT Chart, Timeline.



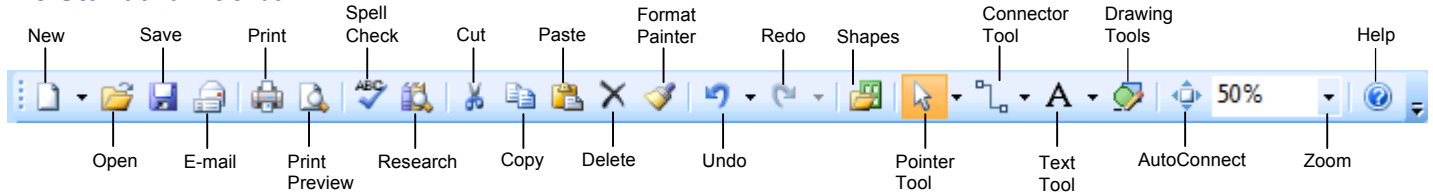
**Software and Database:** Design software structures and systems and document, design and generate databases. **Templates:** Database Model Diagram, COM and OLE, Express-G, etc.

**Formatting Text**

Bold	<Ctrl + <B>
Italics	<Ctrl + <I>
Underline	<Ctrl + <U>
Double Underline	<Ctrl> + <Shift> + <D>
Small caps	<Ctrl> + <Shift> + <K>

# The Fundamentals

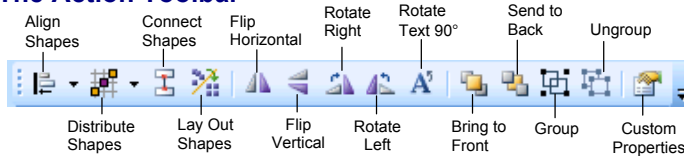
## The Standard Toolbar



- **To Create a New Diagram from a Template:** Select **File** → **New** from the menu, select a template category, and select a template. Or, click the **New button list arrow**, select a category and select a template.
- **To Create a New Diagram from Scratch:** Click the **New button**, or press **<Ctrl> + <N>**.
- **To Open a Diagram:** Click the **Open button** on the Standard toolbar, or select **File** → **Open** from the menu, or press **<Ctrl> + <O>**.
- **To Save a Diagram:** Click the **Save button** on the Standard toolbar, or select **File** → **Save** from the menu, or press **<Ctrl> + <S>**.
- **To Print a Diagram:** Click the **Print button** on the Standard toolbar, or select **File** → **Print** from the menu, or press **<Ctrl> + <P>**.
- **To View a Diagram in Full Screen Mode:** Press **<F5>**. Use the mouse or the arrow keys to navigate between pages.
- **To Change Page Orientation:** Select **File** → **Page Setup** from the menu and select **Landscape** or **Portrait**.
- **To Find a Shape:** Type what you're looking for in the **Search for shapes** box in the Shapes window and click the **Search button**.
- **To Select a Shape:** Click it.

## Working with Shapes

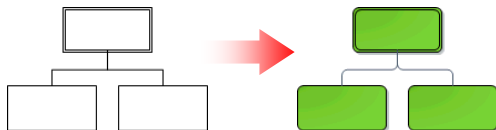
### The Action Toolbar



- **To Insert a Shape:** Click and drag the shape from the stencil to the desired location in the diagram.
- **To Delete a Shape:** Select the shape(s) and press **<Delete>**.
- **To Add Text to a Shape:** Click the shape and start typing.
- **To Move a Shape:** Select the shape and drag it to a new location.
- **To Resize a Shape:** Select the shape and drag one of its sizing handles. Tip: the status bar displays the actual size of the selected shape.
- **To Align or Distribute Shapes:** Select the shapes you want to align or distribute and click the **Align Shapes** or **Distribute Shapes** button on the Action toolbar, or select **Shape** → **Align Shapes** or **Distribute Shapes** from the menu. Select the option you want to use and click **OK**.
- **To Format Shapes:** Select the shape you want to format, click the **Fill Color** or **Line** button list arrow on the Formatting toolbar, and select an option from the list. Or, select **Format** → **Fill** or **Line** from the menu.
- **To Group Shapes:** Select the shapes you want to group and click the **Group** button on the Actions toolbar, or select **Shape** → **Grouping** → **Group** from the menu, or press **<Ctrl> + <G>**.

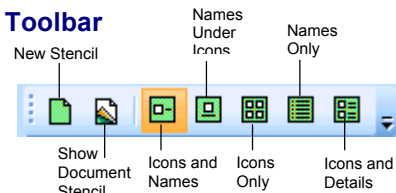
## Themes

- New in Visio 2007, a **theme** is a set of unified design elements that you can apply to a diagram to give it a consistent look and feel. Themes coordinate the look of a diagram using colors, fonts, and effects.
- **To Apply a Theme:** Select **Format** → **Theme** from the menu, or click the **Theme** button on the Formatting toolbar. The Theme - Colors task pane appears by default; click **Theme Effects** to open the Theme - Effects task pane.



## Stencils

### The Stencil Toolbar



- A **stencil** is a collection of shapes related to the template you are currently working on. Each template has a different set of stencils assigned to it.
- **To Open a Stencil:** Click the **Shapes** button on the Standard toolbar or select **File** → **Shapes** → **Open Stencil** from the menu.
- **To Move a Stencil:** Click and drag the stencil by its title bar to a new location in the program window.
- **To Remove a Stencil:** Right-click the stencil and select **Close** from the shortcut menu.
- **To Create a New Stencil:** Select **File** → **Shapes** → **New Stencil** from the menu and add the desired shapes to the stencil.
- **To Change How Shapes are Displayed:** Click the appropriate view button on the Stencil toolbar. Icons and Names is selected by default.

## Connecting Shapes

- **Using AutoConnect:** A new feature in Visio 2007, AutoConnect lets you add, connect, distribute, and align a whole series of shapes, like those in a flowchart, with only a few clicks. To turn on AutoConnect, click the **AutoConnect** button on the Standard toolbar. To use AutoConnect, click a shape in the Shapes window to select it and then rest the mouse pointer over the shape on the drawing page that you want to connect the new shape to. Click the **blue connection arrow** on the side of the shape that you want to connect to. Visio automatically adds and connects the shape from the Shapes window, and aligns and distributes the shapes as necessary.
- **Using the Action Toolbar:** Select the shapes you want to connect and click the **Connect Shapes** button on the Action toolbar, or select **Shape** → **Connect Shapes** from the menu.
- **Using the Connector Tool:** Click the **Connector Tool** button on the Standard toolbar and then click and drag between connection points to connect shapes. To add a connection point, click the **Connector Tool** button list arrow on the Standard toolbar and select **Connection Point Tool** from the list. While holding down the **<Ctrl>** key, click where you want to insert a connection point.

# Custom@Guide

## Get More Free Quick References!

Visit [ref.customguide.com](http://ref.customguide.com) to download.



### Office 365

- [Access](#)
- [Excel](#)
- [Office 365](#)
- [OneNote](#)
- [Outlook](#)
- [PowerPoint](#)
- [Teams](#)
- [Word](#)

### G Suite

- [Classroom](#)
- [G Suite](#)
- [Gmail](#)
- [Google Calendar](#)
- [Google Docs](#)
- [Google Drive](#)
- [Google Sheets](#)
- [Google Slides](#)

### OS

- [Mac OS](#)
- [Windows 10](#)

### Productivity

- [Digital Literacy](#)
- [Salesforce](#)

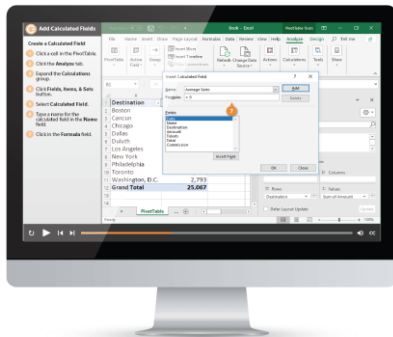
### Soft Skills

- [Business Writing](#)
- [Email Etiquette](#)
- [Manage Meetings](#)
- [Presentations](#)
- [Security Basics](#)
- [SMART Goals](#)

+ more, including [Spanish versions](#)

## Loved by Learners, Trusted by Trainers

Please consider our other training products!



### Interactive eLearning

Get hands-on training with bite-sized tutorials that recreate the experience of using actual software. SCORM-compatible lessons.



### Customizable Courseware

Why write training materials when we've done it for you? Training manuals with unlimited printing rights!

## Over 3,000 Organizations Rely on CustomGuide



“The toughest part [in training] is creating the material, which CustomGuide has done for us. Employees have found the courses easy to follow and, most importantly, they were able to use what they learned immediately.”

Contact Us!

[sales@customguide.com](mailto:sales@customguide.com)

612.871.5004