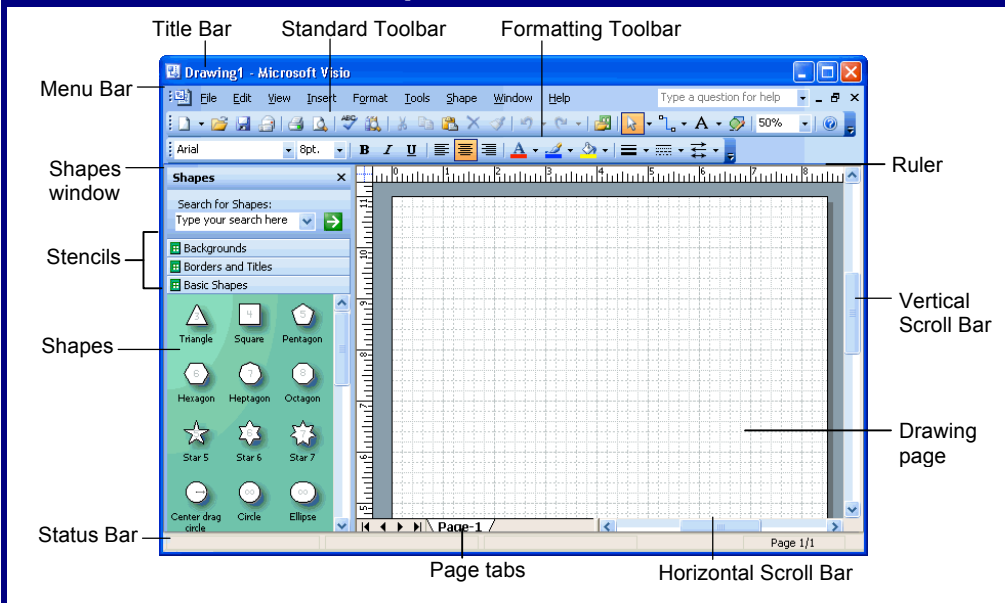


Microsoft®
Visio 2003
 Quick Reference Card

The Visio 2003 Workspace

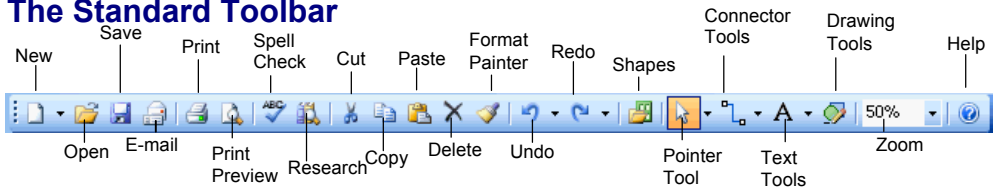
Keyboard Shortcuts



Actual Size	<Ctrl> + <Shift> + <I>
Align Shapes	<F8>
Bring to Front	<Ctrl> + <Shift> + <F>
Send to Back	<Ctrl> + <Shift> +
Cascade	<Alt> + <F7>
Cut	<Ctrl> + <X>
Copy	<Ctrl> + <C>
Duplicate	<Ctrl> + <D>
Field	<Ctrl> + <F9>
Fill	<F3>
Flip Horizontal	<Ctrl> + <H>
Flip Vertical	<Ctrl> + <J>
Toggle Glue	<F9>
Group	<Ctrl> + <G>
Ungroup	<Ctrl> + <Shift> + <U>
Display Help	<F1>
Insert Hyperlink	<Ctrl> + <K>
Line	<Shift> + <F3>
Macros	<Alt> + <F8>
New Drawing	<Ctrl> + <N>
Open	<Ctrl> + <O>
Close File	<Ctrl> + <F4>
Full Screen	<F5>
Print Preview	<Ctrl> + <F2>
Redo	<Ctrl> + <Y>
Undo	<Ctrl> + <Z>
Repeat	<F4>
Find	<Ctrl> + <F>
Rotate Left	<Ctrl> + <L>
Rotate Right	<Ctrl> + <R>
Save	<Ctrl> + <S>
Save Workspace	<Alt> + <F12>
Toggle Snap	<Shift> + <F9>
Snap and Glue	<Alt> + <F9>
Spelling	<F7>

The Fundamentals

The Standard Toolbar



- To Create a New Diagram from a Template:** Select **File** → **New** → **Choose Drawing Type** from the menu, select a diagram type from the Category list, and select a template. Or, click the **New button list arrow**, select a diagram type and select a template.
- To Create a New Diagram from Scratch:** Click the **New button**, or press **<Ctrl> + <N>**.
- To Open a Diagram:** Click the **Open button** on the Standard toolbar, or select **File** → **Open** from the menu, or press **<Ctrl> + <O>**.
- To Save a Diagram:** Click the **Save button** on the Standard toolbar, or select **File** → **Save** from the menu, or press **<Ctrl> + <S>**.
- To Print a Diagram:** Click the **Print button** on the Standard toolbar, or select **File** → **Print** from the menu, or press **<Ctrl> + <P>**.
- To View a Diagram in Full Screen Mode:** Press the **<F5>** key. Use the mouse or the arrow keys on the keyboard to navigate between pages.
- To Change Page Orientation:** Select **File** → **Page Setup** from the menu and select **Landscape** or **Portrait** under Orientation.
- To Find a Shape:** Type what you're looking for in the **Search for shapes** box in the Shapes window and click the **Search button**.
- To Select Objects:** Click and drag around the objects you want to select with the pointer tool. Click the **Pointer Tool button list arrow** to use the other selection tools: Lasso Select or Multiple Select.

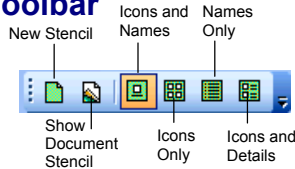
- To Use a Tool:** Click the tool button list arrow and select the tool.
 - Connector:** Click and drag between connection points to connect shapes
 - Connection Point:** Press **<Ctrl>** and click to add a connection point.
 - Text:** Click the drawing page to insert a text block.
 - Text Block:** Select or rotate a text block.
- To Use the Drawing Toolbar:** Click the **Drawing Tools button** to open the Drawing toolbar.
 - Rectangle:** Draw a rectangle shape.
 - Ellipse:** Draw an ellipse shape.
 - Line:** Draw a line.
 - Arc:** Draw an arc.
 - Freeform Shape:** Draw a freeform shape.
 - Pencil:** Change the curve of a freeform shape.

Formatting Text

Bold	<Ctrl +
Italics	<Ctrl + <I>
Underline	<Ctrl + <U>
Double Underline	<Ctrl> + <Shift> + <D>
Small caps	<Ctrl> + <Shift> + <K>

Stencils

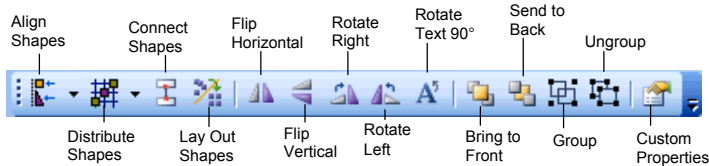
The Stencil Toolbar



- A **stencil** is a collection of shapes related to the template you are currently working on. Each template has a different set of stencils assigned to it.
- **To Open a Stencil:** Click the **Shapes** button on the Standard toolbar or select **File** → **Shapes** → **Open Stencil** from the menu.
- **To Move a Stencil:** Click and drag the stencil by its title bar to a new location in the program window.
- **To Remove a Stencil:** Right-click the stencil and select **Close** from the shortcut menu.
- **To Create a New Stencil:** Select **File** → **Shapes** → **New Stencil** from the menu and add the desired shapes to the stencil.

Shapes

The Actions Toolbar



- **To Insert a Shape:** Click and drag the shape from the stencil to the desired location in the diagram.
- **To Delete a Shape:** Select the shape(s) and press **<Delete>**.
- **To Add Text to a Shape:** Click the shape and start typing.
- **To Move a Shape:** Select the shape and drag it to a new location.
- **To Resize a Shape:** Select the shape and drag one of its sizing handles. Tip: the status bar displays the actual size of the selected shape.
- **To Align Shapes:** Select the shapes you want to align and press **<F8>**, or click the **Align Shapes** button on the Actions toolbar, or select **Shape** → **Align Shapes** from the menu. Click the alignment you want to use and click **OK**.
- **To Distribute Shapes:** Select the shapes you want to distribute and click the **Distribute Shapes** button on the Actions toolbar, or select **Shape** → **Distribute Shapes** from the menu. Click the distribution you want to use and click **OK**.
- **To Connect Shapes:** Select the shapes you want to connect and click the **Connect Shapes** button on the Actions toolbar, or select **Shape** → **Connect Shapes** from the menu. Or, click the **Connector Tool** button on the Standard toolbar and draw a connector line from one connection point to another.
- **To Lay Out Shapes:** Select the shapes you want to lay out (or select none if you want to lay out all shapes) and click the **Lay Out Shapes** button on the Actions toolbar, or select **Shape** → **Lay Out Shapes** from the menu. Select the lay out formatting or properties you want to use and click **OK**.
- **To Format Shapes:** Select the shape you want to format, click the **Fill Color** or **Line** button list arrow, and select an option from the list. Or, select **Format** → **Fill** or **Line** from the menu.
- **To Group Shapes:** Select the shapes you want to group and click the **Group** button on the Actions toolbar, or select **Shape** → **Grouping** → **Group** from the menu, or press **<Ctrl>** + **<G>**.

Diagram Types and Templates

- There are 16 different diagram types and a total of 67 diagram templates in Visio 2003. However, Visio Standard does not have as many templates as Visio Professional.
- A **template** predetermines everything you need to create a specific type of drawing.

Diagram Types



Block Diagram: Create general-purpose diagrams using geometric shapes. **Templates:** Basic Diagram, Block Diagram, Block Diagram With Perspective



Brainstorming: Create diagrams to assist in writing thoughts for planning, decision making and problem solving. **Templates:** Brainstorming Diagram



Building Plan: Organize layouts of a building's interior, such as office cubicles, walls, doors, windows, electrical fixtures, plumbing, or plan an outside space. **Templates:** Electrical and Telecom Plan, Floor Plan, Home Plan, HVAC Control Logic Diagram



Business Process: Organize various aspects of a business with templates that organize finances, cause and effect, workflow, and more. **Templates:** Audit Diagram, Basic Flowchart



Charts and Graphs: Use for financial and sales reports, budgets, sales pyramids, task management. **Templates:** Charts and Graphs, Marketing Charts and Diagrams



Database: Document, design and generate databases. **Templates:** Database Model Diagram, Express-G, ORM Diagram



Electrical Engineering: Create diagrams for basic and advanced electrical systems. **Templates:** Basic Electrical, Circuits and Logic, Industrial Control Systems, Systems



Flowchart: Flowcharts are visual representations of a process. **Templates:** Basic Flowchart, Cross Functional Flowchart, Data Flow Diagram, IDEFO Diagram, SDL Diagram



Map: Use to assemble simple 2-D or 3-D directional maps. **Templates:** Directional Map, Directional Map 3D



Mechanical Engineering: Create pneumatic or hydraulic system diagrams, and assembly instructions. **Templates:** Fluid Power, Part and Assembly Drawing



Network: Diagram an organization's network, including the cabling and physical hardware. **Templates:** Active Directory, Basic Network Diagram, Detailed Network Diagram, LDAP Directory, Novell Directory Services, Rack Diagram



Organization Chart: Organization charts show reporting relationships and how employees are grouped into departments. **Templates:** Organization Chart, Organization Chart Wizard



Process Engineering: Create diagrams for piping systems. **Templates:** Piping and Instrumentation Diagram, Process Flow Diagram



Project Schedule: Keep projects on time with diagrams that help you project courses of action for long-term projects. **Templates:** Calendar, Gantt Chart, PERT Chart, Timeline



Software: Design software structures and systems. **Templates:** COM and OLE, Data Flow Model Diagram, Enterprise Application, Jackson, Program Structure, ROOM, UML Model Diagram, Windows XP User Interface



Web Diagram: Generate site maps and diagram web site architecture. **Templates:** Conceptual Web Site, Web Site Map

Custom@Guide

Get More Free Quick References!

Visit ref.customguide.com to download.



Office 365

- [Access](#)
- [Excel](#)
- [Office 365](#)
- [OneNote](#)
- [Outlook](#)
- [PowerPoint](#)
- [Teams](#)
- [Word](#)

G Suite

- [Classroom](#)
- [G Suite](#)
- [Gmail](#)
- [Google Calendar](#)
- [Google Docs](#)
- [Google Drive](#)
- [Google Sheets](#)
- [Google Slides](#)

OS

- [Mac OS](#)
- [Windows 10](#)

Productivity

- [Digital Literacy](#)
- [Salesforce](#)

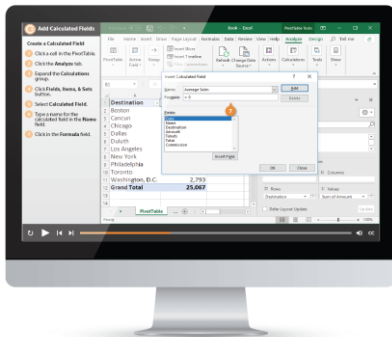
Soft Skills

- [Business Writing](#)
- [Email Etiquette](#)
- [Manage Meetings](#)
- [Presentations](#)
- [Security Basics](#)
- [SMART Goals](#)

+ more, including [Spanish versions](#)

Loved by Learners, Trusted by Trainers

Please consider our other training products!



Interactive eLearning

Get hands-on training with bite-sized tutorials that recreate the experience of using actual software. SCORM-compatible lessons.



Customizable Courseware

Why write training materials when we've done it for you? Training manuals with unlimited printing rights!

Over 3,000 Organizations Rely on CustomGuide



“The toughest part [in training] is creating the material, which CustomGuide has done for us. Employees have found the courses easy to follow and, most importantly, they were able to use what they learned immediately.”

Contact Us!

sales@customguide.com

612.871.5004