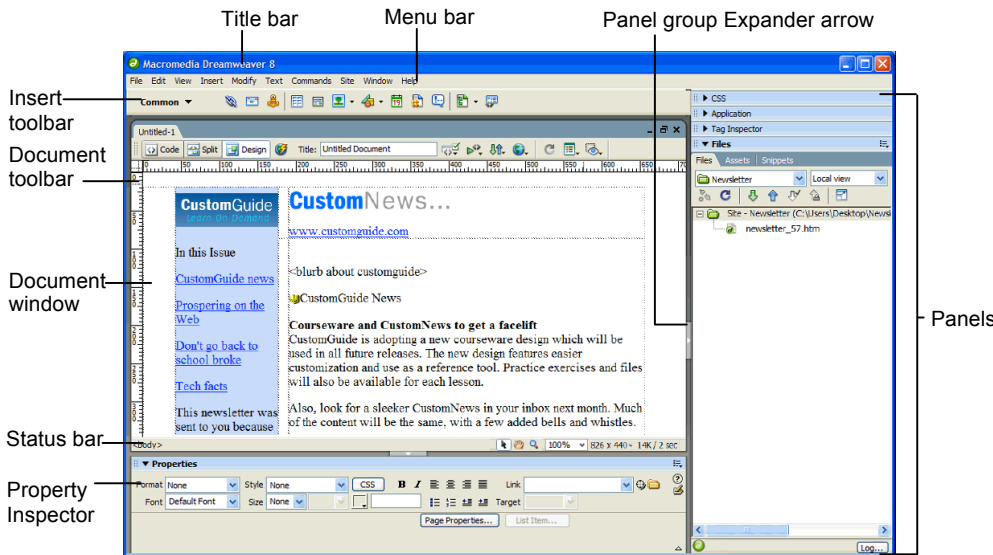


# Dreamweaver 8

## Quick Reference Card

### Dreamweaver 8 Workspace



### Keyboard Shortcuts

#### General

Insert Named Anchor	<b>&lt;Ctrl&gt;+&lt;Alt&gt;+&lt;A&gt;</b>
Add to Library	<b>&lt;Ctrl&gt;+&lt;Shift&gt;+&lt;B&gt;</b>
Duplicate	<b>&lt;Ctrl&gt; + &lt;D&gt;</b>
Edit Style Sheet	<b>&lt;Ctrl&gt;+&lt;Shift&gt;+&lt;E&gt;</b>
Replace	<b>&lt;Ctrl&gt; + &lt;H&gt;</b>
Show/Hide Grids	<b>&lt;Ctrl&gt; + &lt;G&gt;</b>
Show Invisibles	<b>&lt;Ctrl&gt;+&lt;Shift&gt;+&lt;I&gt;</b>
Insert Image	<b>&lt;Ctrl&gt; + &lt;Alt&gt; + &lt;I&gt;</b>
Page Properties	<b>&lt;Ctrl&gt; + &lt;J&gt;</b>
Create Link	<b>&lt;Ctrl&gt; + &lt;L&gt;</b>
Remove Link	<b>&lt;Ctrl&gt;+&lt;Shift&gt;+&lt;L&gt;</b>
Insert Table Row	<b>&lt;Ctrl&gt; + &lt;M&gt;</b>
Delete Table Row	<b>&lt;Ctrl&gt;+&lt;Alt&gt;+&lt;M&gt;</b>
Quick Tag Editor	<b>&lt;Ctrl&gt; + &lt;T&gt;</b>
View Head Content	<b>&lt;Ctrl&gt;+&lt;Shift&gt;+&lt;W&gt;</b>
Show/Hide Link	<b>&lt;Ctrl&gt;+&lt;Shift&gt;+&lt;Y&gt;</b>
Switch Views	<b>&lt;Ctrl&gt; + &lt; ` &gt;</b>

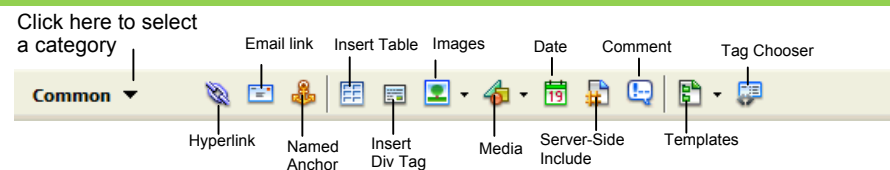
### Document Toolbar

- Code View:** View or edit the page in HTML.
- Split View:** View the page in HTML code and Design view (WYSIWYG) at the same time.
- Design View:** View or edit the page in the WYSIWYG (What You See Is What You Get) editor.
- Server Debug:** View a report to debug errors on the page.
- Title:** Type the Web page title you want to appear in the title bar of the browser.
- Check Browser Compatibility:** Check the compatibility of your document with different Web browsers.
- Validate markup:** Validate current document or tag.
- File Management:** Access already-published files or upload files directly from the document window.
- Preview:** Choose from a list of browsers installed on the computer to preview the page.
- Refresh:** Click to update changes made to the page after working on the HTML code.
- View options:** In Design view, apply a grid or ruler to the page. In Code view, change how the HTML code is displayed.
- Visual Aids:** Choose from different aids to help you design your pages.

#### Function Key Shortcuts

Reference	<b>&lt;Shift&gt; + &lt;F1&gt;</b>
Reference Panel	<b>&lt;Ctrl&gt;+&lt;Shift&gt;+&lt;F1&gt;</b>
Layers	<b>&lt;F2&gt;</b>
Frames	<b>&lt;Ctrl&gt; + &lt;F2&gt;</b>
Object Panel	<b>&lt;Ctrl&gt; + &lt;F2&gt;</b>
Behaviors Panel	<b>&lt;Shift&gt; + &lt;F3&gt;</b>
Property Inspector	<b>&lt;Ctrl&gt; + &lt;F3&gt;</b>
Hide/Show All Floating Windows	<b>&lt;F4&gt;</b>
Site Files	<b>&lt;F5&gt;</b>
Refresh Local	<b>&lt;Shift&gt; + &lt;F5&gt;</b>
Switch to Layout View	<b>&lt;Ctrl&gt; + &lt;F6&gt;</b>
Switch to Standard View	<b>&lt;Ctrl&gt;+&lt;Shift&gt;+&lt;F6&gt;</b>
Code Inspector	<b>&lt;F10&gt;</b>
History Panel	<b>&lt;Shift&gt; + &lt;F10&gt;</b>
Assets Panel	<b>&lt;F11&gt;</b>
CSS Styles Panel	<b>&lt;Shift&gt; + &lt;F11&gt;</b>
Preview in Primary Browser	<b>&lt;F12&gt;</b>
Preview in Secondary Browser	<b>&lt;Ctrl&gt; + &lt;F12&gt;</b>

### Insert Toolbar



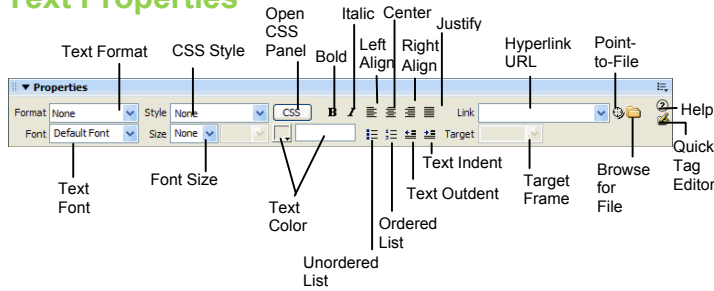
- Categories:** Click the **arrow** button on the left side of the Insert Toolbar and select a category:
- Common:** Includes objects commonly inserted in a Web page (ex. tables, images)
- Layout:** Insert layout tables and frames
- Forms:** Insert elements often found in a Web form (ex. text fields, option buttons, check boxes)
- Text:** Apply formatting to text (bold, italic, etc.)
- HTML:** Insert Spry data objects and other dynamic items like update forms
- Application:** Insert Recordsets, dynamic tables, record forms
- Flash:** Insert Flash elements
- Favorites:** Allows you to group the buttons you use most often

# Property Inspector

## General Commands

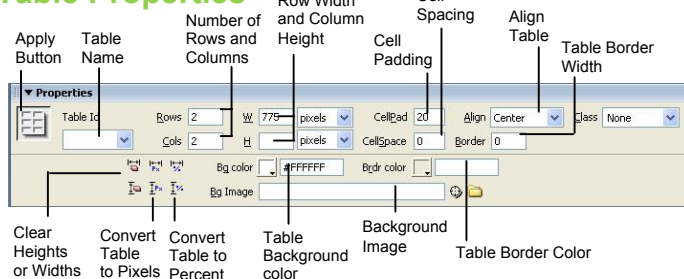
- Select an item to view its properties.
- **To Get Help:** Click the **Help** button for more information on options.
- **Format Text in HTML Code:** Click the **Quick Tag Editor** button to apply an HTML tag to selected text or object.
- **To Expand/Contract the Property Inspector:** Click the **Expander arrow** in the lower right corner to view or hide all the options in the Property Inspector.

## Text Properties



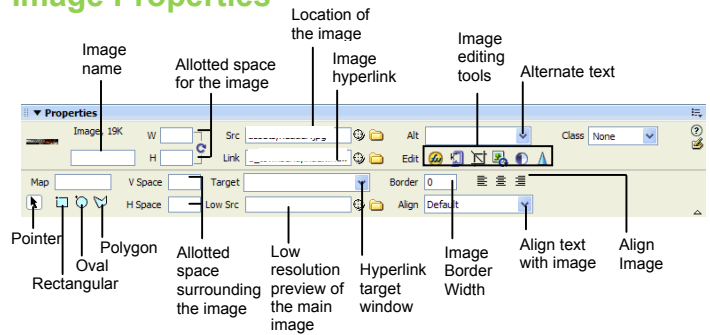
- **To Format Text:** Select the text and apply formatting from the Property Inspector.
- **To Create a Hyperlink:** Select the text and type the URL in the Link textbox; or drag the **Point-to-File** icon to the file in the Site panel; or click the **Folder** icon to browse for a file in the Web site.
- **Specify Link Target Frame:** Specify in which frame the hyperlink should appear.

## Table Properties



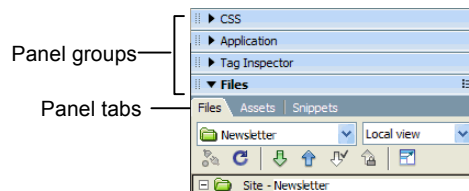
- **To View Table Properties:** Click a table border.
- **To Add or Delete Rows or Columns:** Type the number of rows or columns you want to add or delete in the Rows and Cols text boxes.
- **To Change Table Width:** Type a number in the W text box.
- **To Display the Table in Pixels or Percent:** Click the **pixels** or **percent** button arrow and select the display option.
- **To Add Cell Padding or Cell Spacing:** Enter the amount in the CellPad or CellSpace text boxes.
- **To Add a Background Color:** Click the **Bg color** list arrow and select a color from the palette.
- **To Add a Border Color:** Click the **Brdr color** list arrow and select a color from the palette.
- **To Add a Background Image:** Type the location in the Bg text box, or drag the **Point-to-File** icon to the file in the Site panel; or click the **Folder** icon to browse for a file.
- **To Add a Table Border:** Enter the width in the Border text box.

## Image Properties



- **To Add a Hyperlink to an Image:** Select the text and type the URL in the Link textbox; or drag the **Point-to-File** icon to the file in the Site panel; or click the **Folder** icon to browse for a file in the Web site.
- **To Create an Image Map:** Select the **Rectangular**, **Oval**, or **Polygon** command, draw a shape and set the link location.
- **To Edit an Image:** Use the image editing buttons.
- **To Align an Image:** Click the **Align** button arrow and align the image relative to text nearby; or click the **Left**, **Center** or **Right Align** button in the Inspector.
- **To Insert an Image:** Press **<Ctrl> + <Alt> + <I>**, or select **Insert Image** from the menu.

## Panels



- **To View or Hide a Panel:** Select **Window** from the menu bar and select the panel you want to view or hide. Or, click the panel group and select the panel tab you want to view.
- **To View or Hide Panel Groups:** Click the **Panel group Expander arrow** between the document window and the panel groups.
- There are four panel groups available in Dreamweaver:

### CSS

**CSS Styles:** Apply CSS styles to the current selection

**AP Elements:** Manage the AP (absolutely positioned) elements in your document

### Application

**Databases:** Create and inspect database connections, insert database code

**Bindings:** Locate and insert dynamic content

**Server Behaviors:** Create, insert and edit server behaviors into the page

**Components:** Create, inspect, and insert components or component code

### Tag Inspector

**Attributes:** Edit or add attributes and their values

**Behaviors:** Attach or modify behaviors to page elements such as tags

### Files

**File:** Track local and remote files, and upload files on the Web

**Assets:** View and insert site assets such as images, HTML colors, links, Flash movies, scripts, templates, and library items

**Snippets:** Create, delete, edit, or insert code snippets in the document

# Custom@Guide

## Get More Free Quick References!

Visit [ref.customguide.com](http://ref.customguide.com) to download.



### Office 365

- [Access](#)
- [Excel](#)
- [Office 365](#)
- [OneNote](#)
- [Outlook](#)
- [PowerPoint](#)
- [Teams](#)
- [Word](#)

### G Suite

- [Classroom](#)
- [G Suite](#)
- [Gmail](#)
- [Google Calendar](#)
- [Google Docs](#)
- [Google Drive](#)
- [Google Sheets](#)
- [Google Slides](#)

### OS

- [Mac OS](#)
- [Windows 10](#)

### Productivity

- [Digital Literacy](#)
- [Salesforce](#)

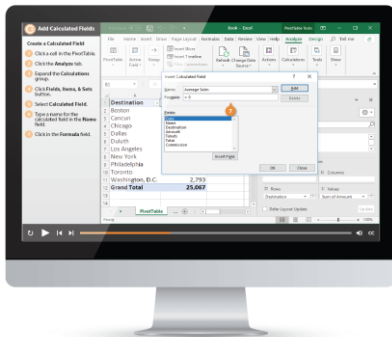
### Soft Skills

- [Business Writing](#)
- [Email Etiquette](#)
- [Manage Meetings](#)
- [Presentations](#)
- [Security Basics](#)
- [SMART Goals](#)

+ more, including [Spanish versions](#)

## Loved by Learners, Trusted by Trainers

Please consider our other training products!



### Interactive eLearning

Get hands-on training with bite-sized tutorials that recreate the experience of using actual software. SCORM-compatible lessons.



### Customizable Courseware

Why write training materials when we've done it for you? Training manuals with unlimited printing rights!

## Over 3,000 Organizations Rely on CustomGuide



“The toughest part [in training] is creating the material, which CustomGuide has done for us. Employees have found the courses easy to follow and, most importantly, they were able to use what they learned immediately.”

Contact Us!

[sales@customguide.com](mailto:sales@customguide.com)

612.871.5004