



# Word

## Basic

EVALUATION  
ONLY

© 2025 by CustomGuide, Inc. 3387 Brownlow Avenue, Suite 200; Saint Louis Park, MN 55426

This material is copyrighted and all rights are reserved by CustomGuide, Inc. No part of this publication may be reproduced, transmitted, transcribed, stored in a retrieval system, or translated into any language or computer language, in any form or by any means, electronic, mechanical, magnetic, optical, chemical, manual, or otherwise, without the prior written permission of CustomGuide, Inc.

We make a sincere effort to ensure the accuracy of the material described herein; however, CustomGuide makes no warranty, expressed or implied, with respect to the quality, correctness, reliability, accuracy, or freedom from error of this document or the products it describes. Data used in examples and sample data files are intended to be fictional. Any resemblance to real persons or companies is entirely coincidental.

The names of software products referred to in this manual are claimed as trademarks of their respective companies. CustomGuide is a registered trademark of CustomGuide, Inc.

# Contents

---

<b>Word Fundamentals .....</b>	<b>7</b>
Understand the Screen .....	8
The Word Screen.....	8
Create New Documents .....	10
Create a Blank Document .....	10
Create a Document from a Template .....	11
Open a File .....	13
Open a Document .....	13
Open a PDF for Editing.....	14
Save a File.....	15
Save a New Document .....	15
AutoSave Documents.....	16
Save Progress .....	16
Save As a New File and/or Location.....	17
Save to Different File Formats .....	18
AutoRecover.....	19
Recover a Document.....	19
AutoRecover Settings.....	20
Navigate a Document.....	21
Move the Insertion Point .....	21
Scroll in a Document .....	22
Use the Navigation Pane.....	22
View Documents .....	23
Change Document Views .....	23
Zoom .....	24
Show or Hide Formatting Symbols.....	25
View Multiple Documents .....	26
Switch Windows.....	26
View Documents Side by Side.....	27
Split the Window.....	28
Print.....	29
Print a Document .....	29
Share a Document.....	31

Share a Document .....	31
Manage Access to a Document .....	33
The Quick Access Toolbar .....	34
Customize the Quick Access Toolbar .....	34
Help .....	35
The Tell Me Field .....	35
The Help Pane.....	36
Document Properties .....	37
View and Edit Document Properties .....	37
View Advanced Properties .....	38
Check Accessibility and Compatibility .....	39
Check Accessibility.....	39
Check Compatibility.....	41
Close and Exit .....	42
Close a Document.....	42
Close Word .....	43
<b>Work with and Edit Text.....</b>	<b>45</b>
Select and Edit Text .....	46
Select Text .....	46
Edit Text.....	47
Cut, Copy, and Paste.....	48
Copy and Paste .....	48
Cut and Paste.....	49
Undo, Redo, and Repeat.....	50
Undo a Single Change.....	50
Undo Multiple Changes .....	50
Redo.....	51
Repeat .....	51
Check Spelling and Grammar .....	52
Spelling and Grammar Errors .....	52
Correct a Spelling or Grammar Error .....	53
Ignore a Spelling or Grammar Error .....	53
Add a Word to the Dictionary .....	54
Word Count and Thesaurus.....	55
Find the Word Count .....	55
Use the Thesaurus .....	56
Find and Replace Text.....	57

Find Text.....	57
Advanced Find.....	58
Replace Text.....	59
Insert Symbols.....	60
Insert a Symbol .....	60
Insert Text from Another File.....	62
Insert Text from File .....	62
Use AutoCorrect.....	63
Add New AutoCorrect Entries.....	63
<b>Format Text and Paragraphs .....</b>	<b>65</b>
Format Fonts.....	66
Change the Font.....	66
Change the Font Size.....	67
Change the Font Color .....	67
Apply Bold, Italic, or an Underline .....	68
Change the Case.....	68
Clear Formatting .....	69
Create Lists.....	70
Numbered List.....	70
Bulleted List.....	71
Multilevel Lists .....	72
Change the List Style.....	72
Custom Numbering.....	73
Paragraph Alignment .....	74
Align a Paragraph.....	74
Borders and Shading .....	75
Add a Border .....	75
Add Shading .....	76
Additional Border and Shading Options .....	77
Line and Paragraph Spacing .....	78
Change Line Spacing .....	78
Change Paragraph Spacing.....	79
Copy Formatting .....	80
Copy Text Formatting.....	80
Indent Paragraphs.....	81
Increase or Decrease Indent .....	81
Custom Indentation Options.....	82

First Line and Hanging Indents .....	83
Tab Stops .....	84
Enable Formatting Marks and the Ruler .....	84
Set a Tab Stop Using the Ruler .....	85
Set a Custom Tab Stop.....	86
Move or Remove a Tab Stop .....	87
Find and Replace Formatting.....	88
Find and Replace Text Formatting.....	88
<b>Format the Page.....</b>	<b>91</b>
Adjust Margins.....	92
Choose a Margin Size .....	92
Set Custom Margins .....	93
Page Size and Orientation .....	94
Change Page Size .....	94
Change Page Orientation.....	95
Headers and Footers .....	96
Use a Header or Footer .....	96
Remove a Header or Footer .....	97
Create a Custom Header or Footer .....	98
Page Numbers .....	100
Add Page Numbers.....	100
Format Page Numbers.....	101
Remove Page Numbers .....	102
Columns.....	103
Format Columns .....	103
Use a Column Break .....	104
Page Breaks .....	105
Insert Page Breaks .....	105
Remove a Page Break.....	106
Insert a Blank Page .....	106
Use Paragraph Line and Page Breaks .....	107
Page Background Elements .....	108
Add a Watermark .....	108
Add Page Color .....	109
Add Page Borders .....	110

# Word Fundamentals

---

Microsoft Word is a powerful word processor with a lot of features to help you create professional documents. With so many features, though, it can be pretty daunting at first.

In this module, you'll learn the fundamentals of using Microsoft Word. You'll get a feel for the interface and learn how to create, open, and save new Word documents. You'll also learn how to view and navigate documents, and how to print and share them.

## Objectives

---

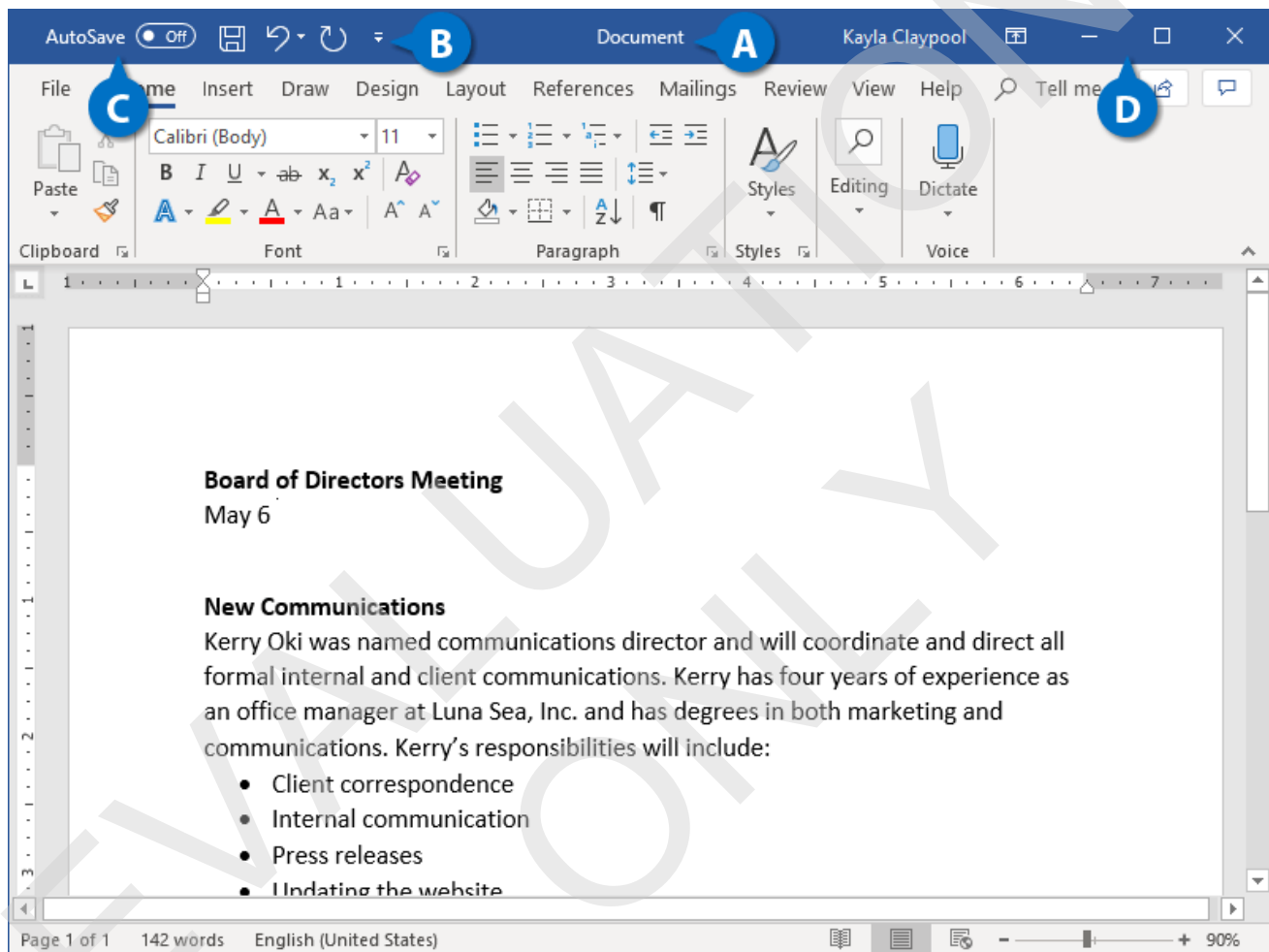
- Understand the Screen
- Create New Documents
- Open a File
- Save a File
- AutoRecover
- Navigate a Document
- View Documents
- View Multiple Documents
- Print
- Share a Document
- The Quick Access Toolbar
- Help
- Document Properties
- Check Accessibility and Compatibility
- Close and Exit

# Understand the Screen

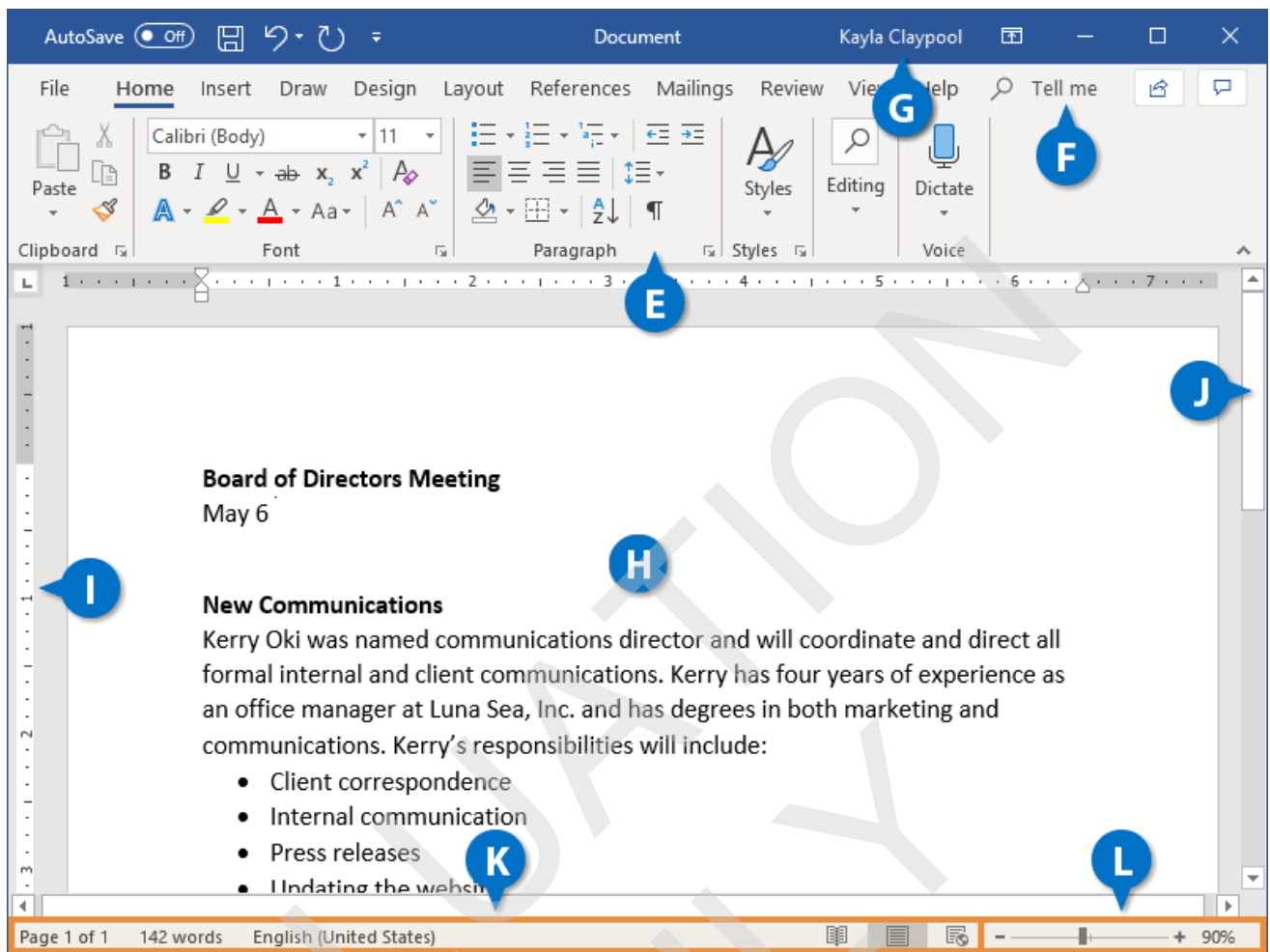
There are many different elements that make up the Word program screen.

## The Word Screen

Review the labeled items in the images below, then refer to the tables to see what everything does.



<b>A</b>	<b>Title Bar:</b> Displays the name of the current file.	<b>C</b>	<b>AutoSave Switch:</b> If the current document is saved to a cloud storage location, like OneDrive or SharePoint, you can toggle whether changes are automatically saved.
<b>B</b>	<b>Quick Access Toolbar:</b> Contains common commands such as Save and Undo. It can be customized to include many common commands.	<b>D</b>	<b>Display Options:</b> This is where you can change how much of the ribbon is displayed; minimize, maximize or restore the Word window; or close Word altogether.



<b>E</b>	<b>Ribbon:</b> This is where you'll find all the options you need to make a stellar document. The options are grouped into tabs.	<b>I</b>	<b>Rulers:</b> When the rulers are turned on, they appear at the top and the left of the document.
<b>F</b>	<b>Tell Me Search Box:</b> Allows you to search for commands by typing out keywords.	<b>J</b>	<b>Scroll Bars:</b> Use the scroll bars to move up and down or left and right in a document.
<b>G</b>	<b>Microsoft Account User Info:</b> When you're logged in with your Microsoft account, your name appears here.	<b>K</b>	<b>Status Bar and Views:</b> Shows summary information like the number of pages and words in the document. Next to it are the buttons to change the document view.
<b>H</b>	<b>Document Window:</b> This is where you see your document, where you edit and format the text.	<b>L</b>	<b>Zoom Slider:</b> Use the zoom slider to change how big the document appears.

# Create New Documents

---

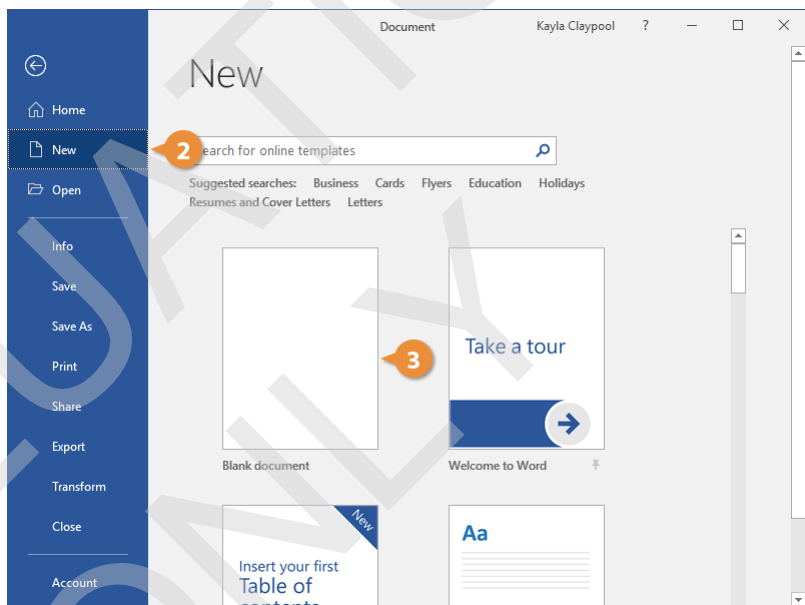
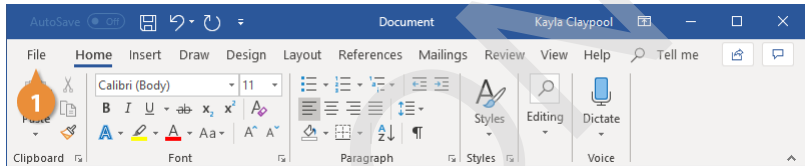
Creating a new document is one of the most basic commands you need in Word. You can create a new blank document, or you can create a new document based on a template.

## Create a Blank Document

- 1 Click the **File** tab.
- 2 Click **New**.
- 3 Select **Blank Document**.

A new, blank document is created in a new window.

Shortcut: Press **Ctrl + N** to open a new blank document.



## Create a Document from a Template

1 Click the **File** tab.

2 Click **New**.

The New screen has a few ways for you to select a template.

First, several featured templates will appear, after the Blank document template.

You can also search for a template using the search field or select a template category from the suggested searches.

3 (Optional) Select or search for a template category.

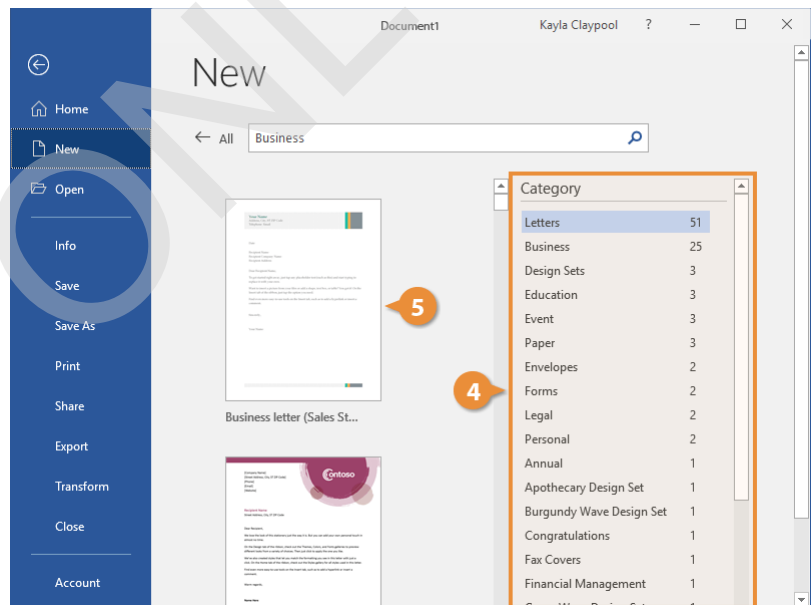
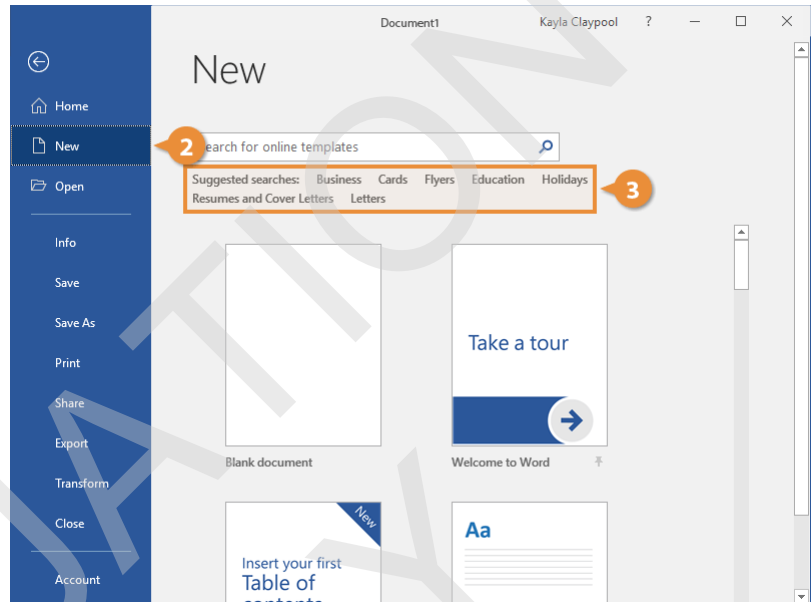
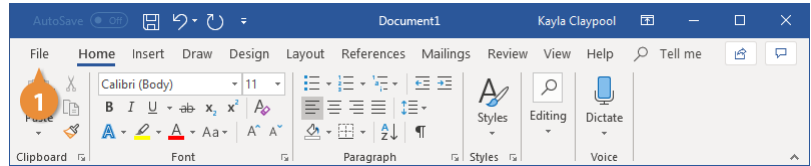
Preview images of the templates will appear for the selected category, along with a Category list.

4 (Optional) Select an additional category.

Selecting additional categories allows you to narrow your template search even more. Only templates that fit into all the selected categories will appear.

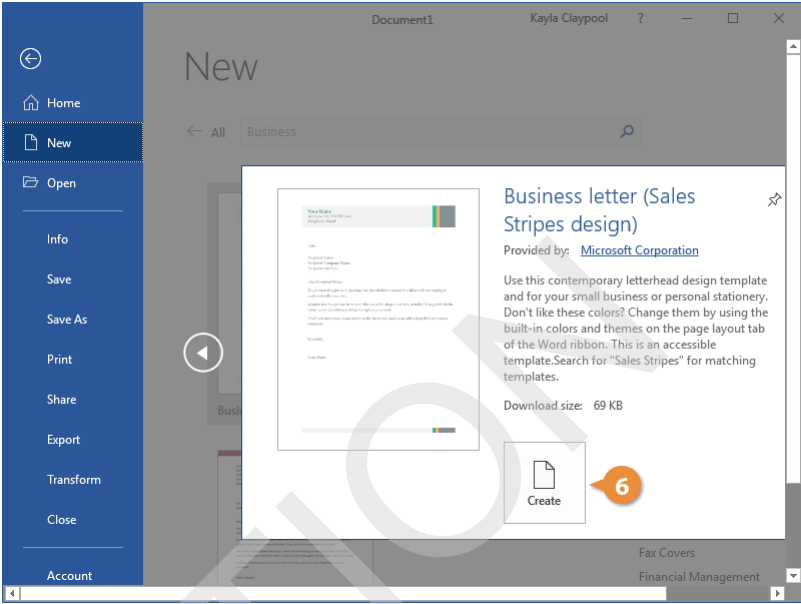
5 Select a template.

A larger preview of the template appears, along with a description.



**6** Click **Create**.

A new document from the template is created. Now, just fill in the placeholders.



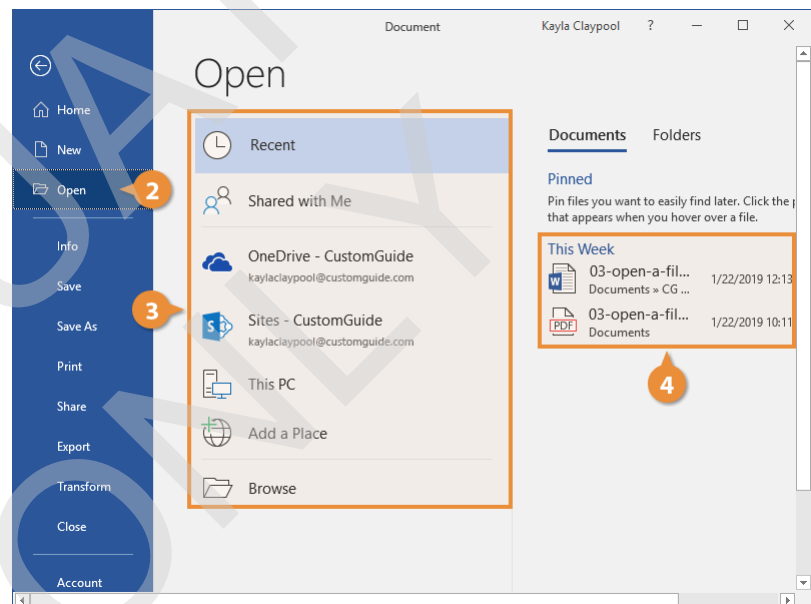
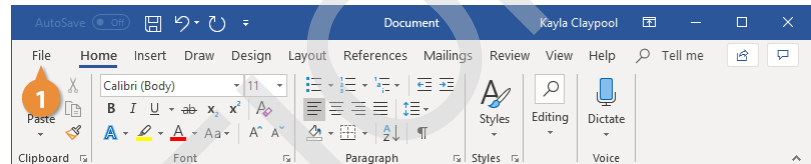
# Open a File

Opening a file lets you resume working on a document that you have saved from earlier or that someone else has created and shared with you.

## Open a Document

While you can open a document by double-clicking its icon in Windows, you can also browse and open files from within Word.

- 1 Click the **File** tab.
- 2 Click **Open**.  
The Open screen appears, giving you a few ways to find a document.
- 3 Select a location.
  - **Recent** displays a list of documents that you've recently opened.
  - **Shared with Me** will show documents that others have shared with you through your Office 365 account.
  - Your **OneDrive** and **SharePoint** sites will let you browse through the files stored on those cloud servers, if you have them.
  - **This PC** lets you browse through the Documents folder for files.
  - Clicking **Browse** opens a dialog box, where you can browse through your computer's folders, drives, and network shares.
- 4 Select the file you want to open.



The selected file opens.

**Tip:** From the Browse dialog box, you'll need to click the Open button after selecting the file.

## Open a PDF for Editing

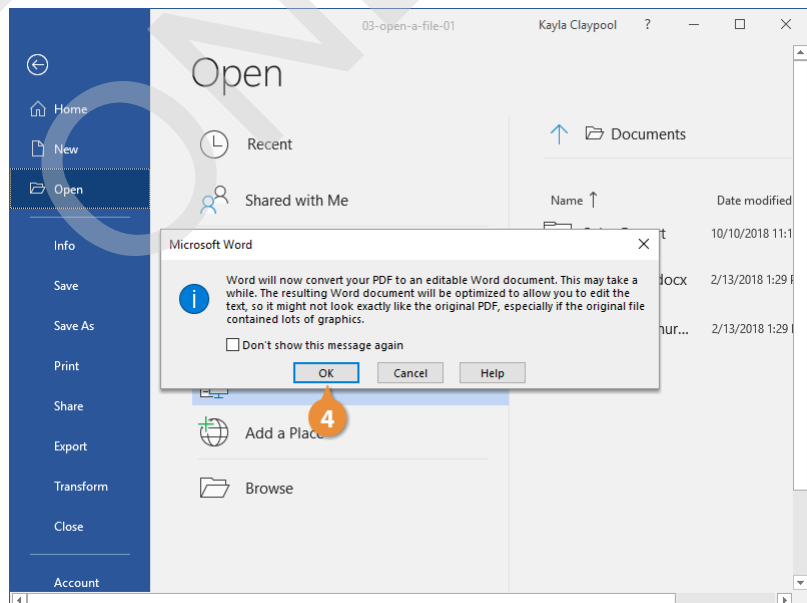
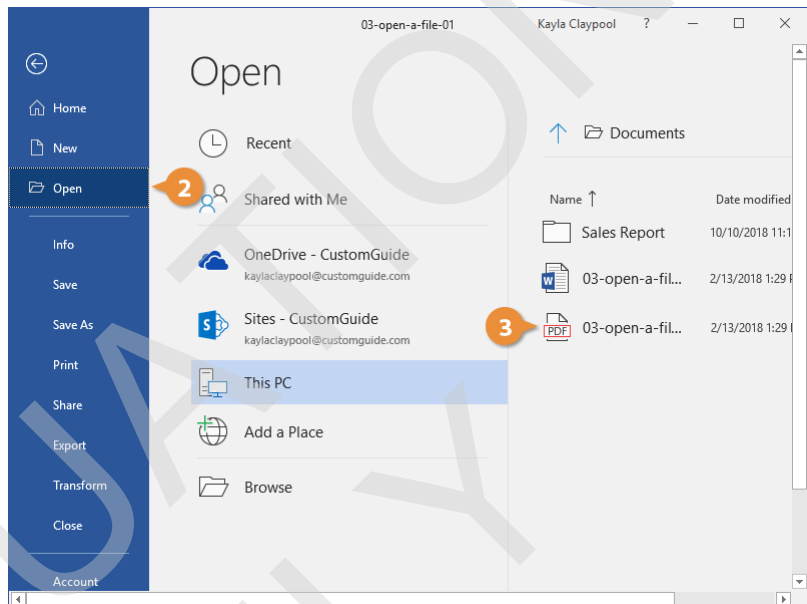
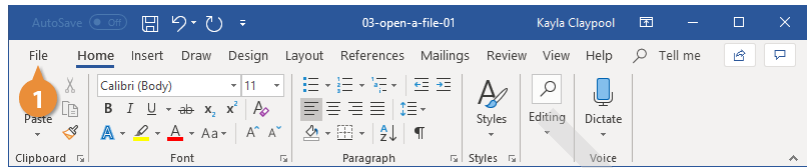
In addition to opening Word's regular file formats, you can also open PDF documents for editing.

- 1 Click the **File** tab.
- 2 Click **Open**.
- 3 Select and open a PDF file.

A dialog box appears, explaining that opening a PDF in Word converts it to a Word document and opens it as a copy. You'll be able to edit the text, but some formatting and graphics may look different.

- 4 Click **OK**.

A copy of the PDF is converted into an editable document, and it opens so that you can edit the text.



# Save a File

After you've created a new document or made changes to an existing document, you'll need to save it for those changes to be preserved. You can also save a copy of an existing document, using a new name, a new location, or a different file type.

## Save a New Document

When you save a new document for the first time, you'll need to give it a name and tell Word where to save it.

**1** Click the **Save** button on the Quick Access Toolbar.

Since the document doesn't have a name or location yet, the **Save As** screen will appear.

**2** Choose a location to save the file to:

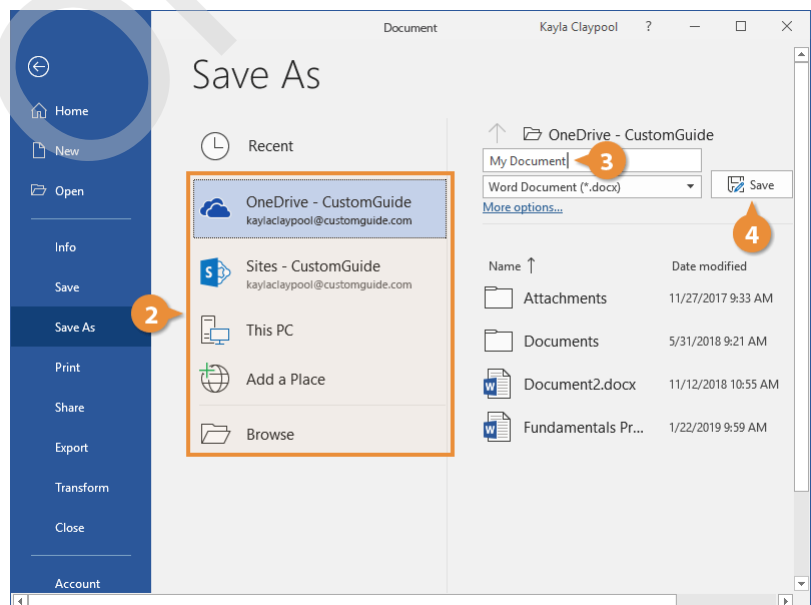
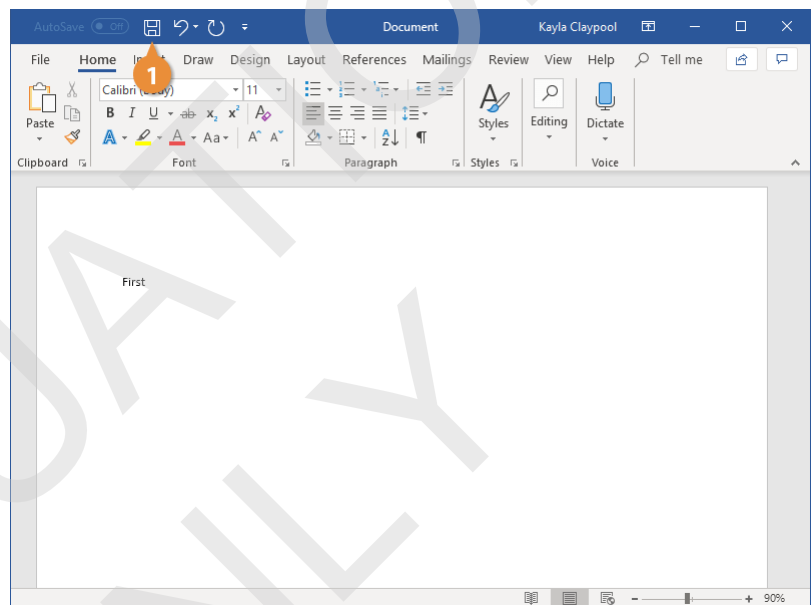
- **OneDrive**, a cloud storage folder accessible to all computers and mobile devices that you've connected to your Office 365 account.
- A **SharePoint** site, if you're part of an organization that uses one.
- Select **This PC** to save the file locally in your Documents folder.
- Click **Browse** to open a dialog box, where you can browse through your computer's folders, drives, and network shares.

**3** Enter a file name.

**4** Click **Save**.

The file is saved and can be safely closed for you to reopen later.

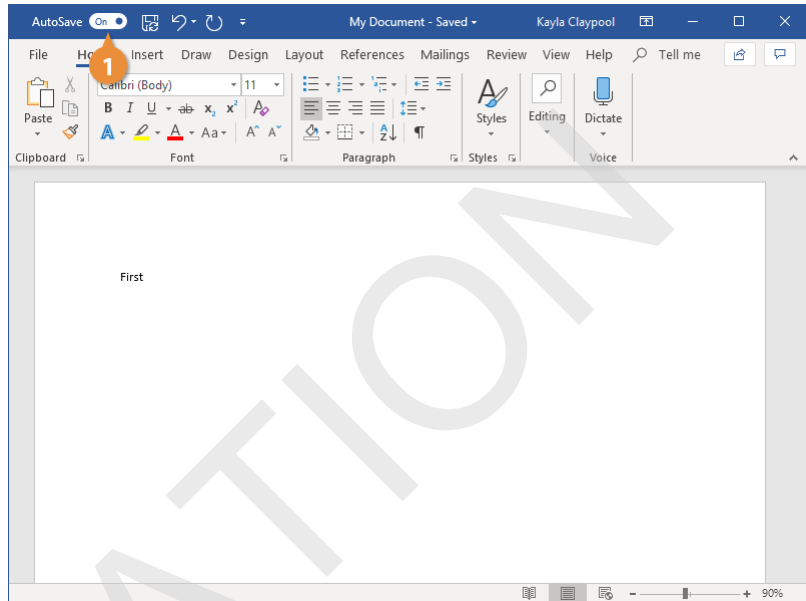
**Shortcut:** Press **Ctrl + S** to save.



## AutoSave Documents

If you've saved a document to an online location, you'll have the option to automatically save changes.

- 1 Click the **AutoSave** toggle button to turn the feature on or off.

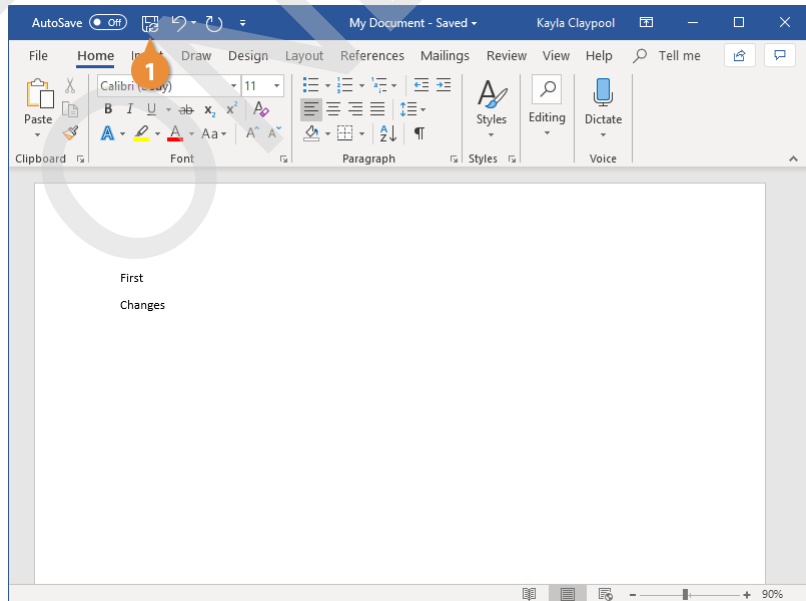


## Save Progress

As you continue to work in Word, you'll want to save any changes you make periodically. This way, you won't lose all of your work if there's an unexpected crash.

- 1 Click the **Save** button on the Quick Access Toolbar.

**Shortcut:** Press **Ctrl + S** or click the **File** tab and select **Save**.

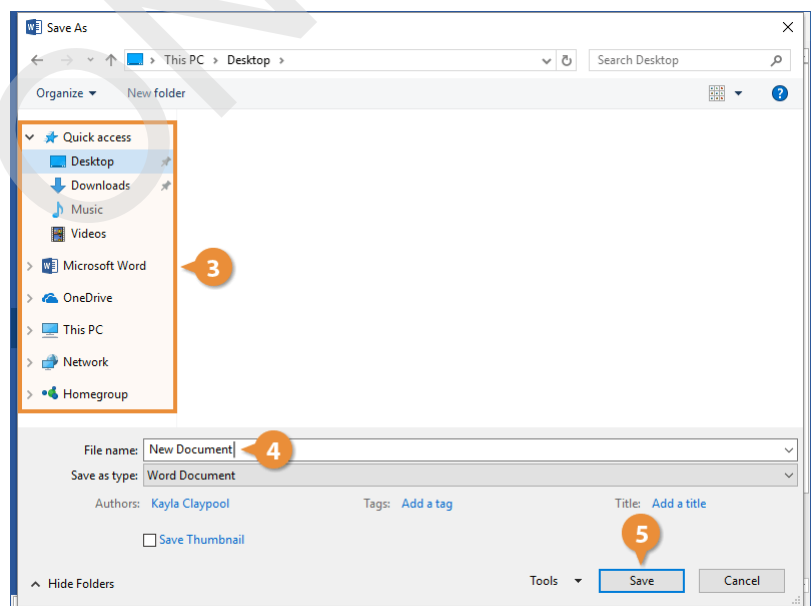
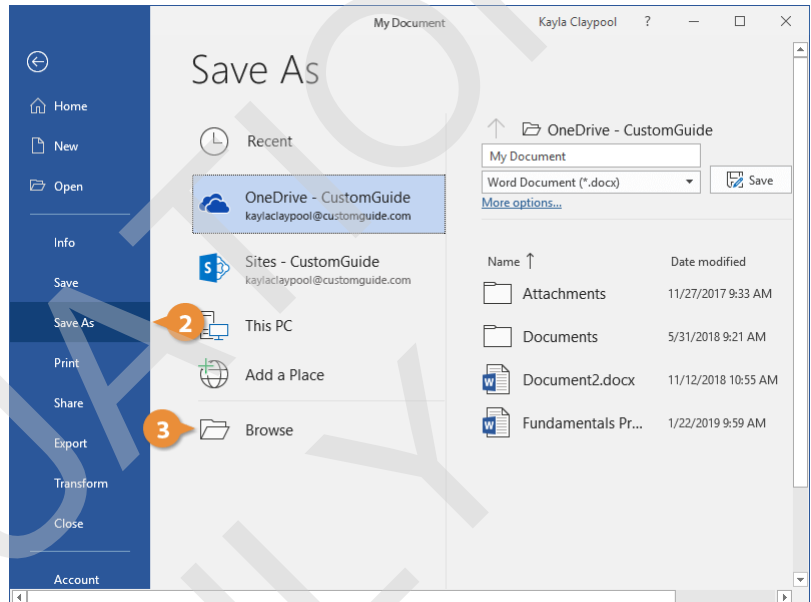
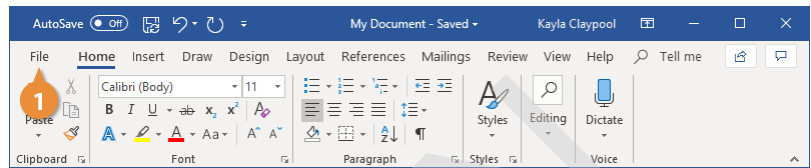


## Save As a New File and/or Location

Sometimes you may want to make a copy of an existing document by saving it in a new location and/or with a new name.

- 1 Click the **File** tab.
- 2 Click **Save As**.
- 3 Select a location, by selecting either OneDrive, SharePoint, or This PC. Or, you can click **Browse** and navigate to the folder where you want to save your file.
- 4 Enter a new file name.
- 5 Click **Save**.

The document is saved to the new location with the new name. The original file is automatically closed so you can start working in the new one right away.

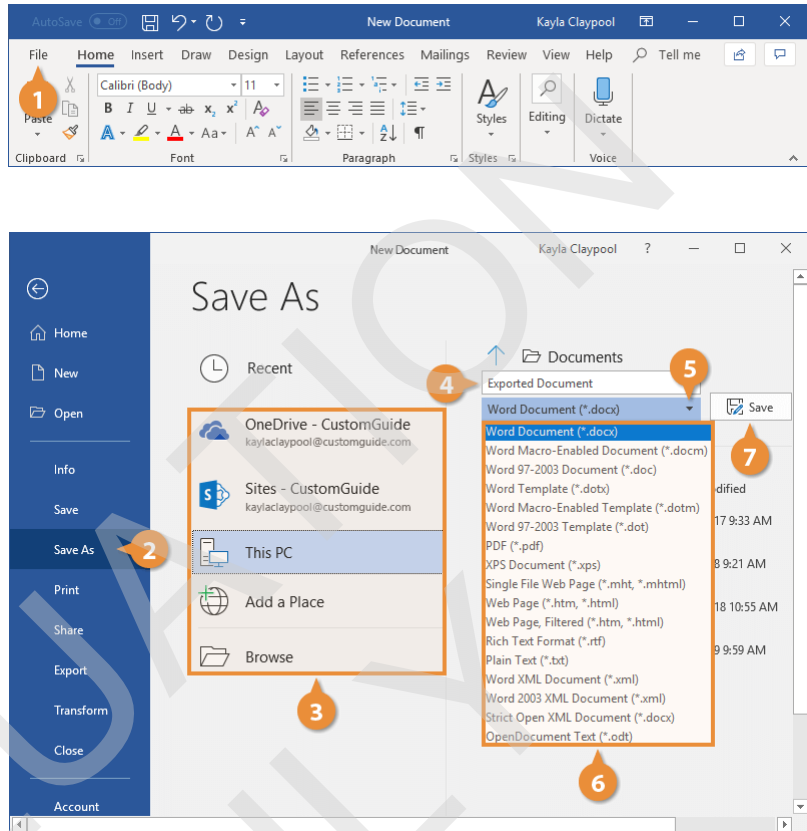


## Save to Different File Formats

Word normally saves its files as Word documents, but you can save your Word projects as other file formats too.

- 1 Click the **File** tab.
- 2 Click **Save As**.
- 3 Choose where you want to save your file.
- 4 (Optional) Enter a new file name.
- 5 Click the **Save as type** list arrow.
- 6 The drop-down list displays the different types of files you can save the document as.
- 7 Select a file format.
- 8 Click **Save**.

A copy of the file is saved in the new format.



Common Word File Formats	
<b>Word Document (.docx)</b>	This is the default format for Word documents.
<b>Word Macro-Enabled Document (.docm)</b>	This is a version of the default Word file type that supports macros, which allow for small tasks to be automated.
<b>Word 97-2003 Document (.doc)</b>	Documents in this format can be read by all previous versions of Word, but lack some advanced features. They are also larger than .docx files and are more prone to corruption.
<b>PDF (.pdf)</b>	A PDF preserves a document as how it would appear when printed and can be shared electronically to be viewed on many kinds of devices.
<b>Web Page (.htm, .html)</b>	This format creates pages that can be uploaded to the web and viewed in a browser.
<b>Rich Text (.rtf)</b>	This basic format can be opened by nearly any text editor and preserves basic font formatting.
<b>Plain Text (.txt)</b>	This simple file type saves only text with no formatting or page layout.

# AutoRecover

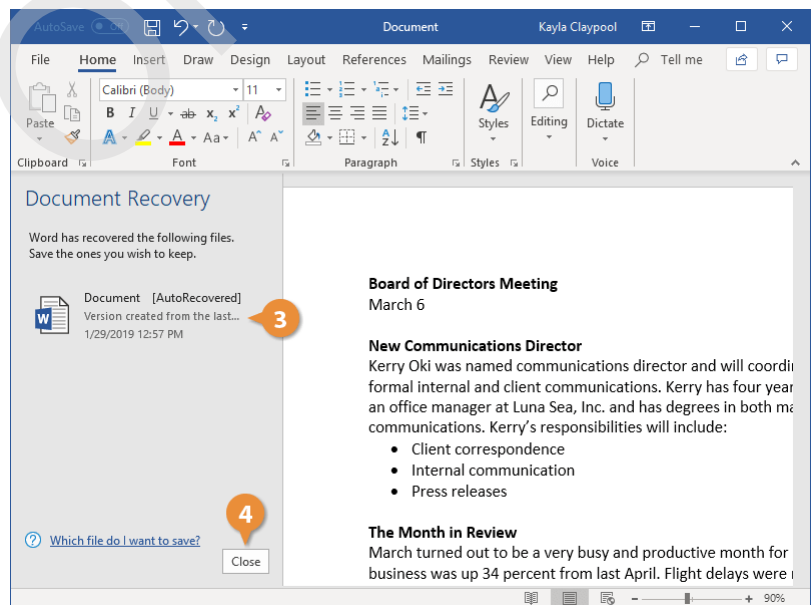
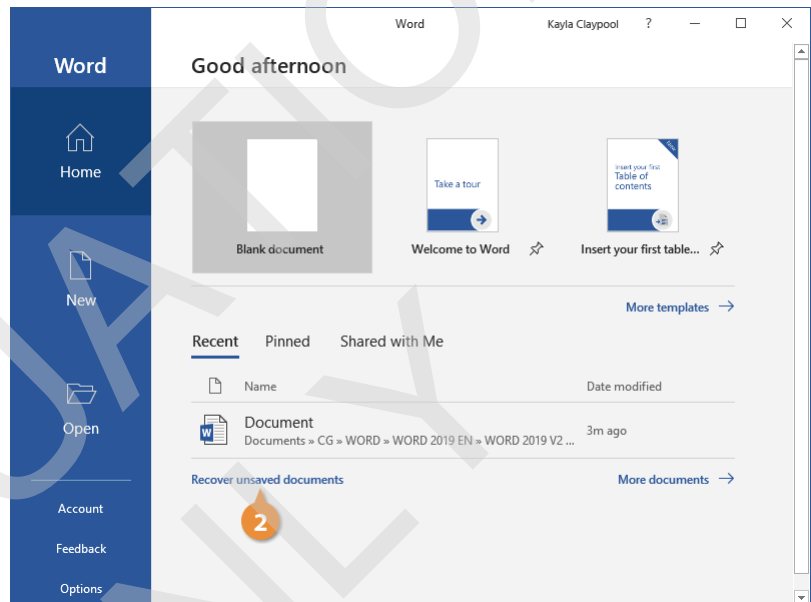
Computers don't always work the way they're supposed to. Nothing is more frustrating than when a program, for no apparent reason, decides to take a quick nap, locks up, and stops responding to your commands—especially if you lose the precious document that you're working on!

Fortunately, Word keeps temporary versions of your documents as you work. If it encounters a problem and stops responding, you can restart Microsoft Word or your computer and try to recover your lost documents.

## Recover a Document

- 1** Restart Microsoft Word.  
If an unsaved document can be recovered, the Recovered header will appear.
- 2** Click **Recover unsaved documents**.  
The Document Recovery pane appears, listing all recovered documents that were found.
- 3** Select the document from the Document Recovery pane.  
The last AutoSaved version of the document opens.
- 4** Click **Close**.

The Document Recovery pane closes, and you can get back to work.



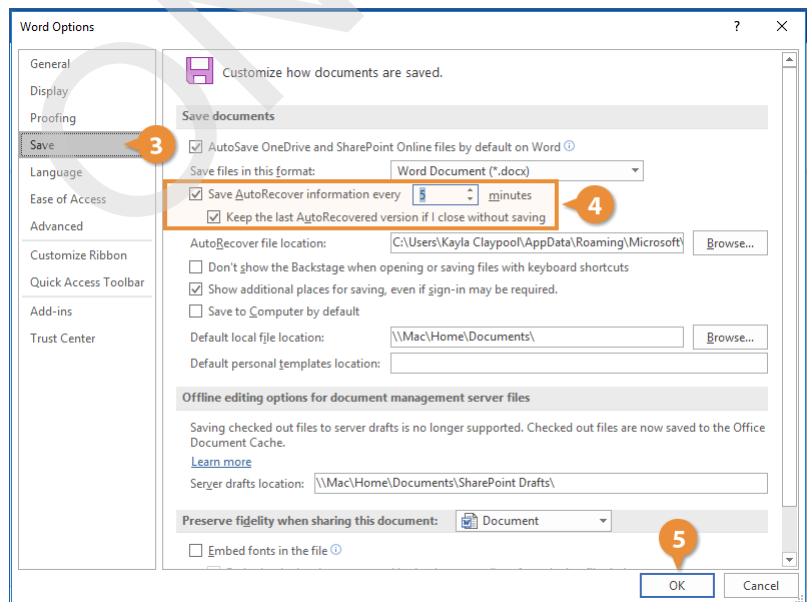
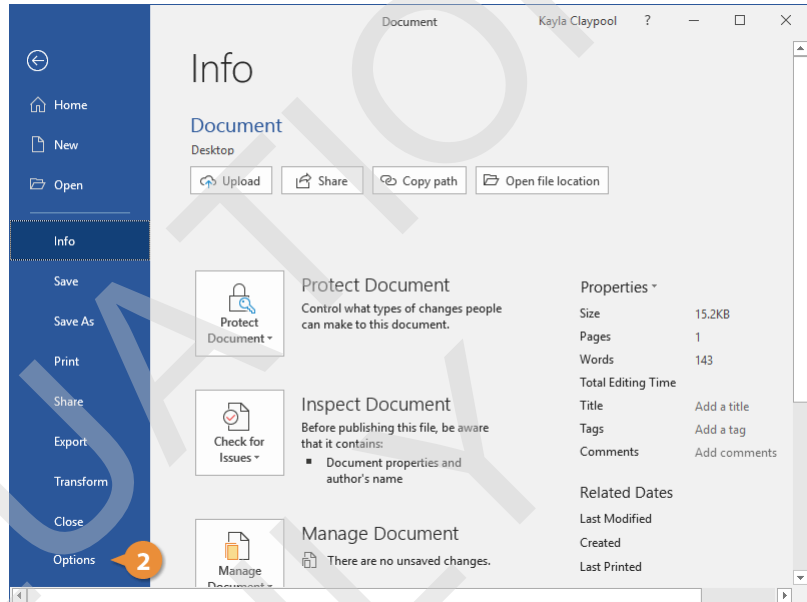
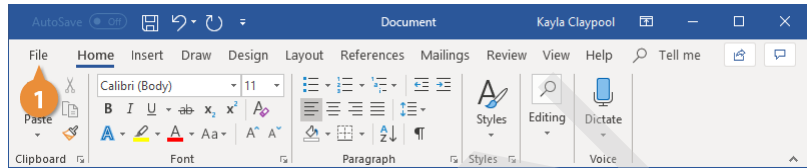
## AutoRecover Settings

You can further protect your work by adjusting the AutoRecover settings. You can change the AutoRecover save interval so that it saves more frequently than the default setting of every 10 minutes.

- 1 Click the **File** tab.
- 2 Select **Options**.
- 3 Click **Save**.
- 4 Make sure the **Save AutoRecover information** check box is checked and adjust the time interval.  
**Tip:** You can't specify the interval if the check box is not selected.
- 5 Click **OK**.

The AutoRecover settings are updated.

**Tip:** Even with Word's document recovery features, the best way to ensure that you don't lose much information if your computer freezes up is to save your work frequently.



# Navigate a Document

While working on a document, you'll often need to move the text cursor around to change where you're typing.

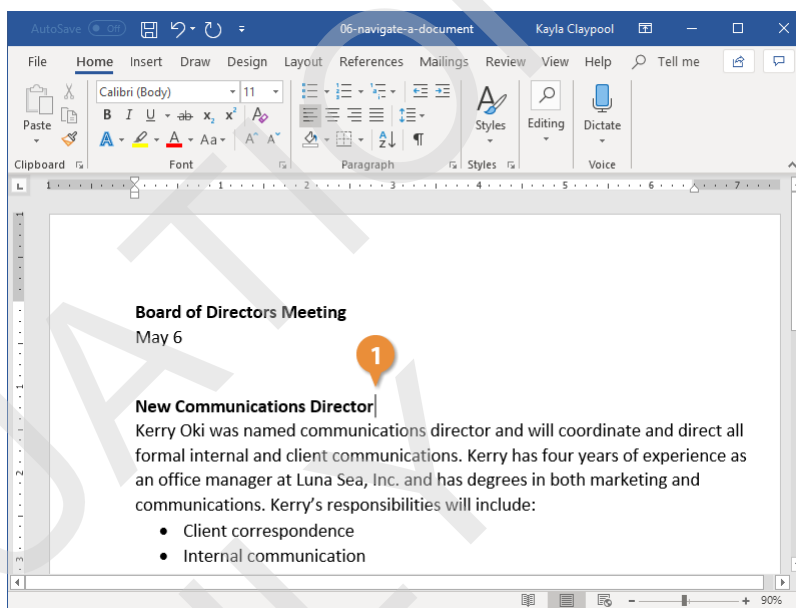
## Move the Insertion Point

The insertion point is the blinking vertical bar that represents where text will be inserted as you type.

- 1 Click anywhere inside the document.

The insertion point moves to where you clicked—or, at least, as close as possible. If you click in a margin, or after the end of the text toward the bottom of the page, the insertion point moves to the closest point it can.

You can also move the insertion point around using the keyboard. This method is described in the table below.

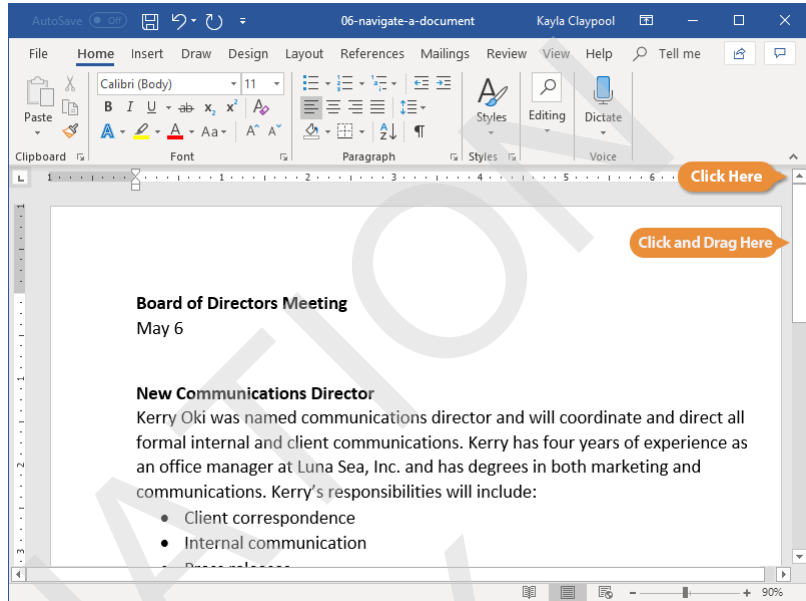


Press	To Move the Insertion Point
Arrows (↑↓←→)	Up or down one line; or left or right one character.
Home	To the beginning of the current line.
End	To the end of the current line.
Page Up	Up one screen, while also scrolling the page the same distance.
Page Down	Down one screen, while also scrolling the page the same distance.
Ctrl + Arrows (↑↓←→)	Up or down one paragraph; or left or right one word.
Ctrl + Home	To the beginning of the document.
Ctrl + End	To the end of the document.

## Scroll in a Document

When a document gets long enough, it can be tough to navigate through the whole thing with just the keyboard. You can use the scroll bars on the right and bottom sides of the window to move through the document quickly.

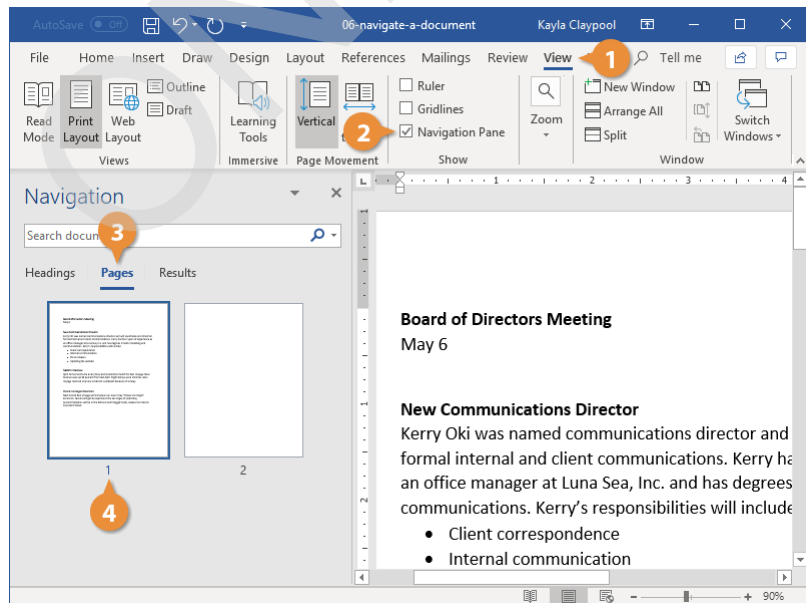
- Click the arrow buttons at the top, bottom, and sides of the scroll bar to scroll one line at a time.
- Click and drag a scroll bar to move quickly through a document, releasing it when you've reached the page you want.



## Use the Navigation Pane

If you have a longer document with multiple pages, or you've set up your document into sections with headings, you can use the Navigation Pane to move quickly through sections and pages.

- 1 Click the **View** tab on the ribbon.
  - 2 Select the **Navigation Pane** check box in the Show group.
  - 3 The Navigation Pane appears on the left side of the screen, showing headings used in the document. Clicking one will jump to that heading.
  - 4 Click **Pages**.
- The Navigation Pane now shows every page in the document, represented by a thumbnail.
- 4 Click a page in the Navigation Pane.



Word navigates right to the selected page.

# View Documents

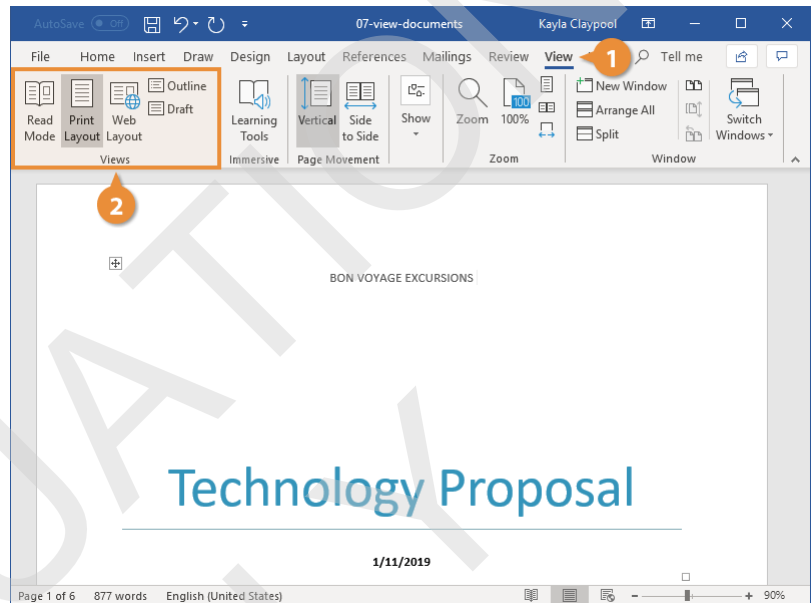
There are several ways to change how a document's contents are displayed on the screen using the preset document views. You can also zoom in or out to view more or less of the page at a time and view multiple documents at once.

## Change Document Views

1 Click the **View** tab.

2 Select a view.

- **Read Mode** only shows necessary toolbars, making room for enlarged text and navigational tools. This view is read-only, so you won't be able to make edits.
- **Print Layout view** displays your document as it will appear when printed. It's best for working in documents with advanced formatting.
- **Web Layout view** shows backgrounds, wraps text to fit inside the window, and positions graphics just as they are in a web browser.
- **Outline view** displays your document in classic outline form.
- **Draft view** works well for most simple word-processing tasks, such as typing, editing, and simple formatting. Does not display advanced formatting, such as page boundaries, headers and footers, or floating pictures.



**Tip:** You can quickly access Read Mode, Print Layout, and Web Layout views from the View buttons in the status bar.

## Zoom

Sometimes it is helpful to make a document appear larger on the computer's screen, especially if you have a small monitor or poor eyesight. It can also be helpful to zoom out so that you can see how the whole document looks.

1 Click the **Zoom In** or **Zoom Out** buttons on the status bar.

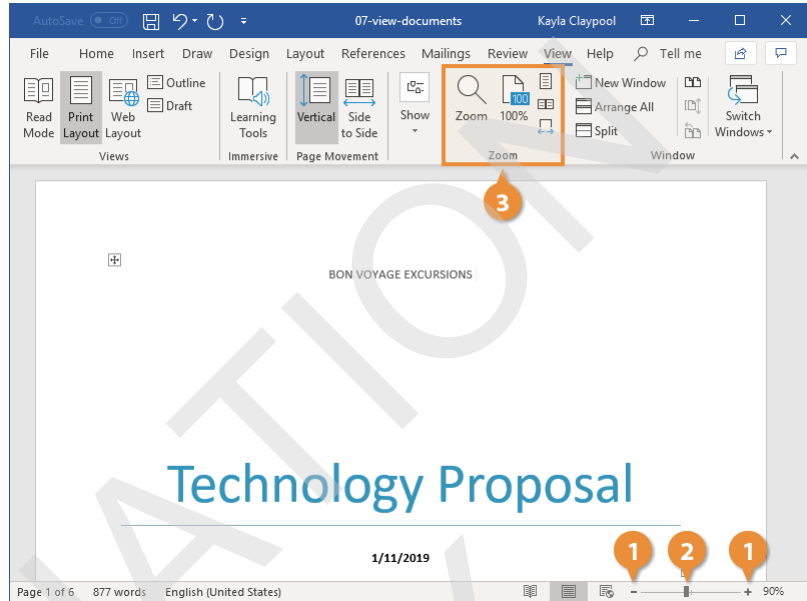
The page zooms in or out.

2 Click and drag the zoom slider to adjust the zoom level.

Using the zoom slider is a more precise way to adjust the zoom on your document.

3 Click one of the options in the Zoom group on the View tab of the ribbon to control the zoom level further.

- Click the **Zoom** button to open the Zoom dialog box, where you can specify a zoom level.
- Click the **100%** button on the View tab to return your document to viewing at 100%.
- Click the **One Page** button to zoom the document out so that one entire page is visible in the window.
- Click the **Multiple Pages** button to see multiple full pages side by side.
- Click the **Page Width** button to automatically zoom the document in so that the page fills the window side-to-side.



## Show or Hide Formatting Symbols

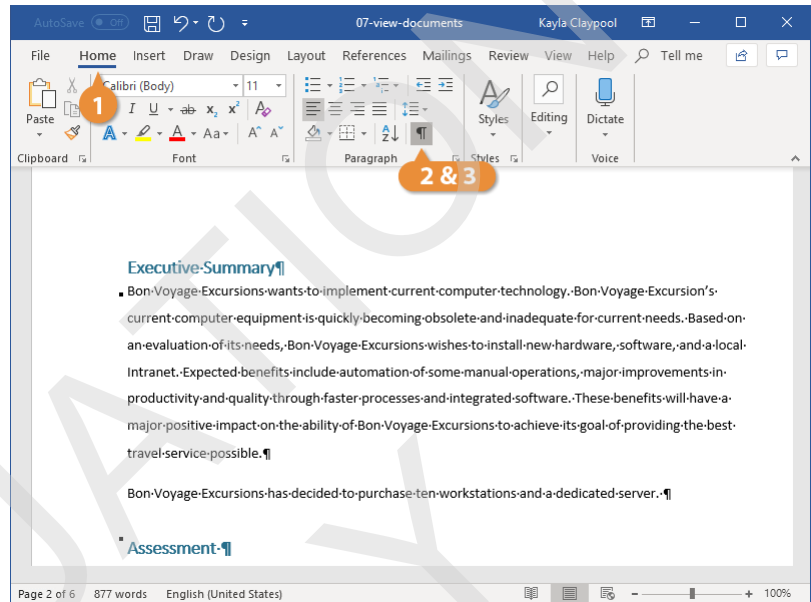
Every document is filled with hidden formatting symbols that help control how the text is laid out on the page. New paragraphs, carriage returns, tabs, spaces, and page breaks can be seen, selected, moved, and deleted.

Viewing these formatting symbols lets you see where you may have added extra spaces between words, for example, or whether spaces or tab stops were used to indent text.

- 1 Click the **Home** tab.
- 2 Click the **Show/Hide ¶** icon.  
The hidden formatting symbols are now shown. These symbols represent spaces, new paragraphs, page breaks, and other bits of text and page formatting.
- 3 Click the **Show/Hide ¶** button again.

The symbols are hidden once again.

**Shortcut:** Press **Ctrl + \*** to display or hide the formatting symbols.



# View Multiple Documents

## Switch Windows

If you have several documents open in Word, you can switch between them while they are all open.

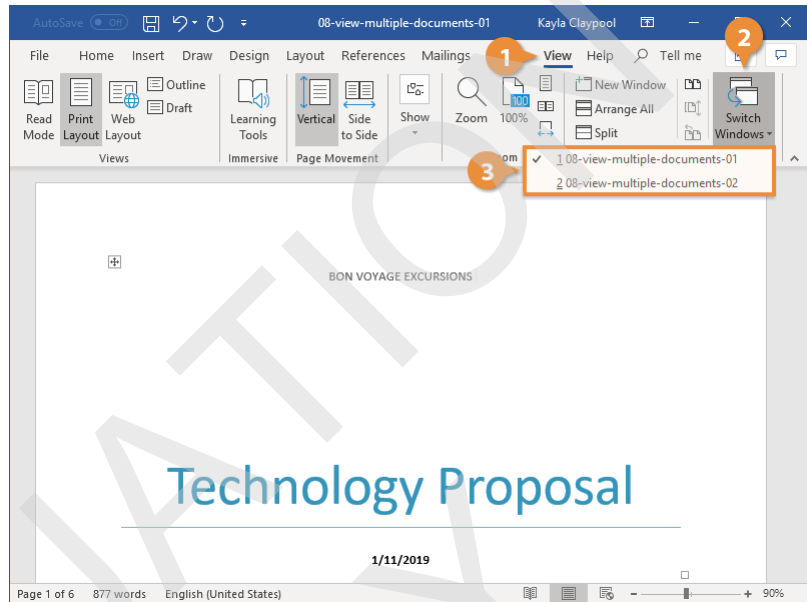
1 Click the **View** tab on the ribbon.

2 Click the **Switch Windows** button.

All the documents currently open are listed, with a check next to the active one.

3 Select another document.

The other document comes to the front.



## View Documents Side by Side

If you need to compare the contents of two documents to each other, you can also view them side by side.

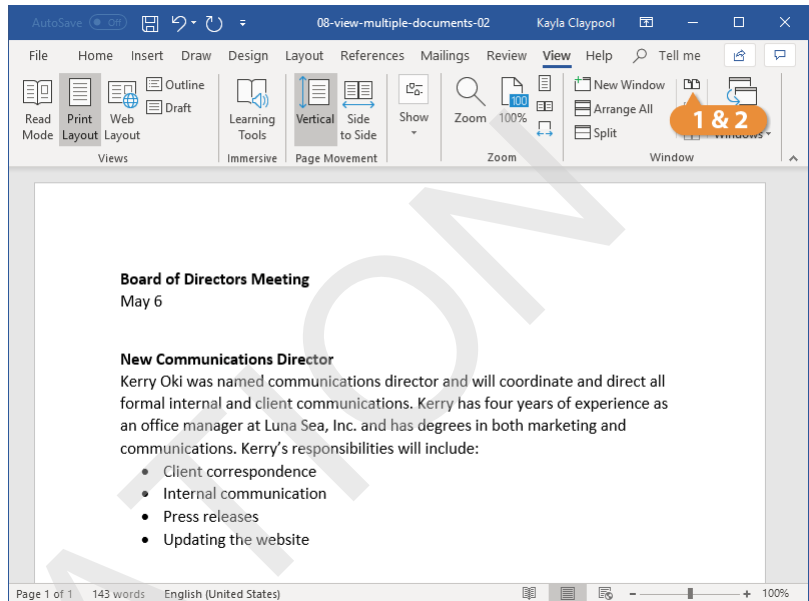
- 1 With two documents open at the same time, click the **View Side by Side** button.

The windows are resized so that they'll both fit on the screen, and they're arranged side by side.

While viewing documents side by side, the **Synchronous Scrolling** feature is enabled. When you scroll one document up or down, the other document will scroll at the same speed. You can turn this feature off by clicking the **Synchronous Scrolling** button.

- 2 Click the **View Side by Side** button again.

The windows return to normal.



## Split the Window

You can also split a Word document window in two, with two panes each showing part of the same document.

1

Click the **Split Window** button on the View tab.

The window is split into two panes, one on top and one on the bottom. Both panes show the current document but can be scrolled independently. This lets you keep an eye on one part of the document while typing and editing another.

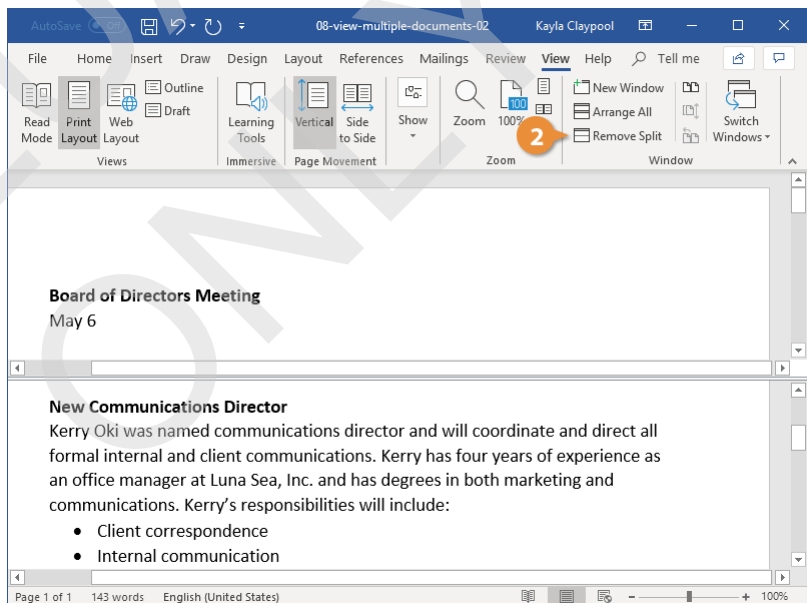
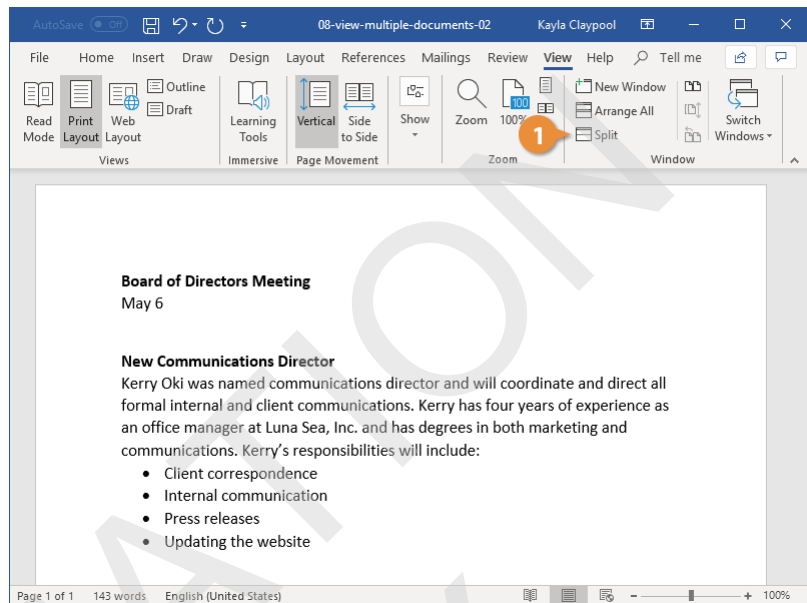
**Tip:** Click and drag the border between the panes to adjust the size of the panes.

2

Click the **Remove Split** button.

The split is removed, and you're back to viewing the document in a single pane.

**Tip:** Clicking the **New Window** button on the View tab does something similar, opening a second window of the current document. This lets you arrange the two windows however you want, viewing two different parts of the document at once.



# Print

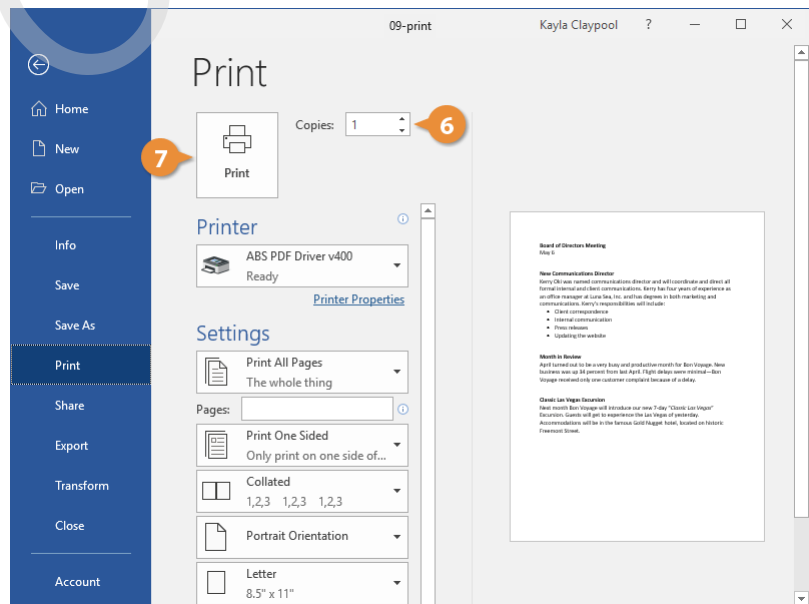
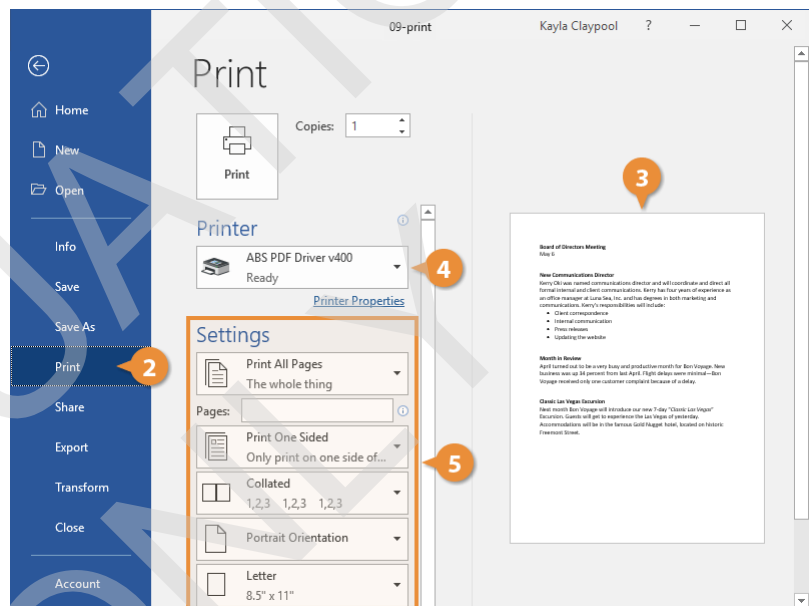
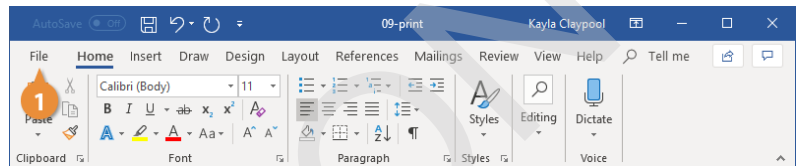
When you're ready to print a document, and if you have a printer connected to your computer, you can preview a document and print it.

## Print a Document

- 1 Click the **File** tab.
- 2 Click **Print**.
- 3 Examine the print preview on the right side of the screen to ensure the document appears correct.
- 4 Select the correct printer by clicking the **Printer** list arrow and selecting it from the list.
- 5 Adjust the printer settings using the options below the printer, described in the following table.
- 6 Set the number of copies in the **Copies** text field.
- 7 Click **Print**.

The document is sent to the printer.

**Shortcut:** Press **Ctrl + P**.



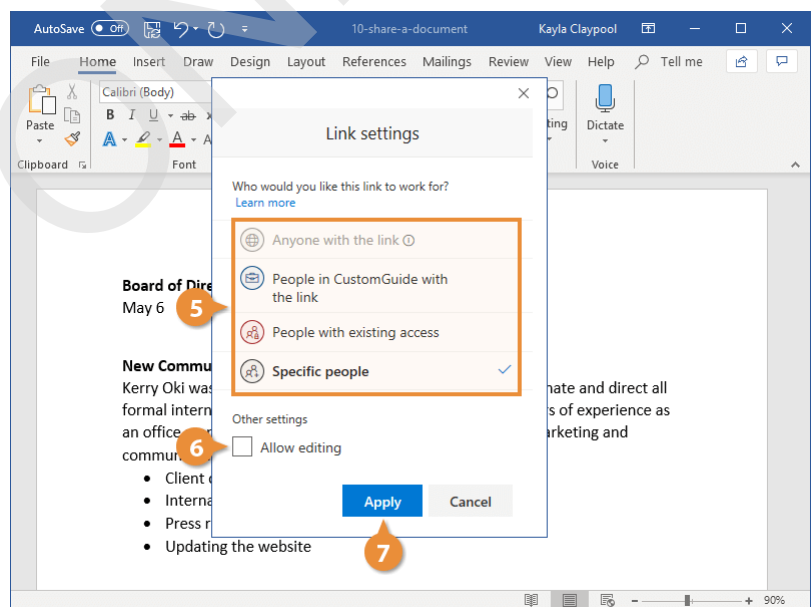
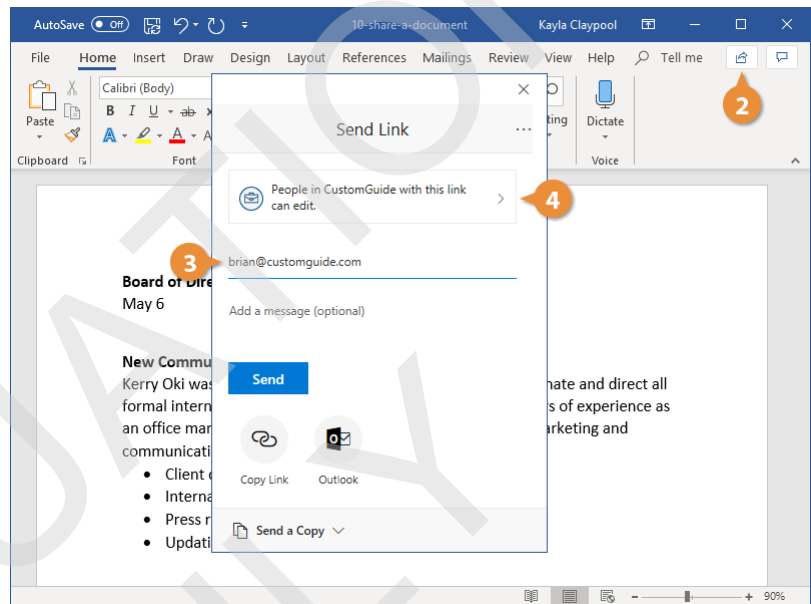
Print Settings	
<b>Print Range</b>	Print the whole document, a certain page range, a single section, or just even or odd pages.
<b>Print One Sided / Both Sides</b>	Print the document one-sided, enable a printer's two-sided printing function, or manually flip the pages during printing.
<b>Collate</b>	Collating prints multiple copies of the document all the way through (1, 2, 3, 1, 2, 3), while printing uncollated prints multiple copies of each page together (1, 1, 2, 2, 3, 3).
<b>Orientation</b>	Select Portrait (taller) or Landscape (wider).
<b>Page Size</b>	Select the size of paper you're printing on.
<b>Page Margins</b>	Adjust the margins between the edge of the page and the text.
<b>Pages Per Sheet</b>	Arrange multiple pages on a single sheet.

# Share a Document

It's easy to share a document with other people from within Word. For example, you can send a sharing invitation to co-workers that gives them access to view or edit the file. To easily share your document, make sure it's saved to an online location, such as your OneDrive or your organization's SharePoint server.

## Share a Document

- 1 Save your document in an online location, such as OneDrive or SharePoint.
- 2 Click the **Share** button.
- 3 Enter an email address or select one from the address book.
- 4 Click the **Link settings** list arrow.  
Here you can control who this link you send out will work for.
- 5 Select who can view the link.
- 6 Select whether to allow editing.
- 7 Click **Apply**.



**8** (Optional) Include a message.

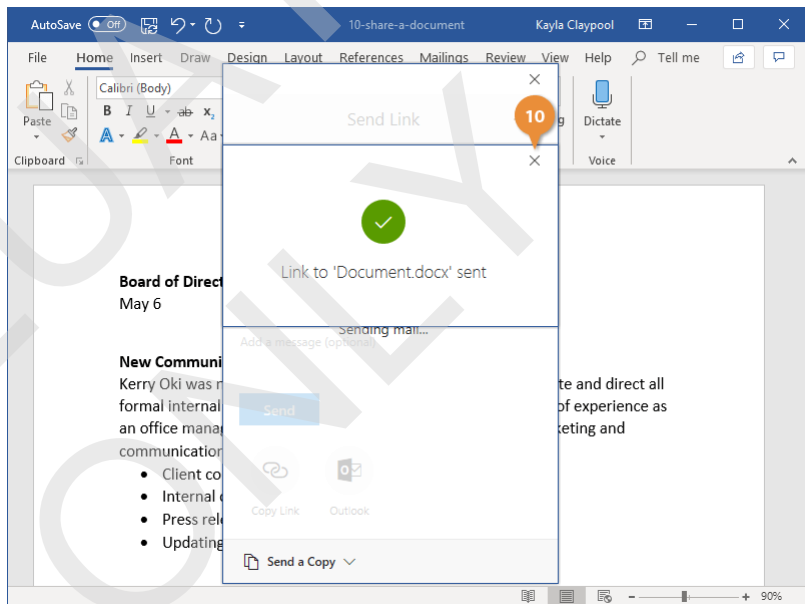
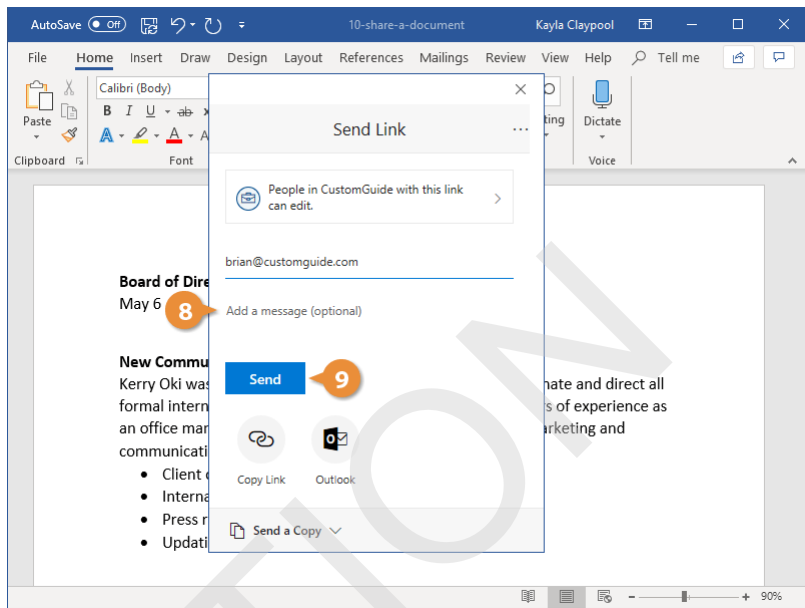
This message will be included in the email that's sent, informing the recipients that you're sharing a document with them.

**9** Click **Send**.

**10** Click **Close**.

Anyone who has been granted access to the document shows up in the Share pane, along with their permission level.

**Tip:** You can always revoke or modify a person's sharing permissions by right-clicking their name in the Share pane.



## Manage Access to a Document

After you've started sharing things with others, it may be tricky to remember who has access to what.

1 Click the **Share** button.

2 Click the **More Options (...)** button.

3 Select **Manage Access**.

Now, you can see who has access to this document, and whether they have editing or view-only permissions.

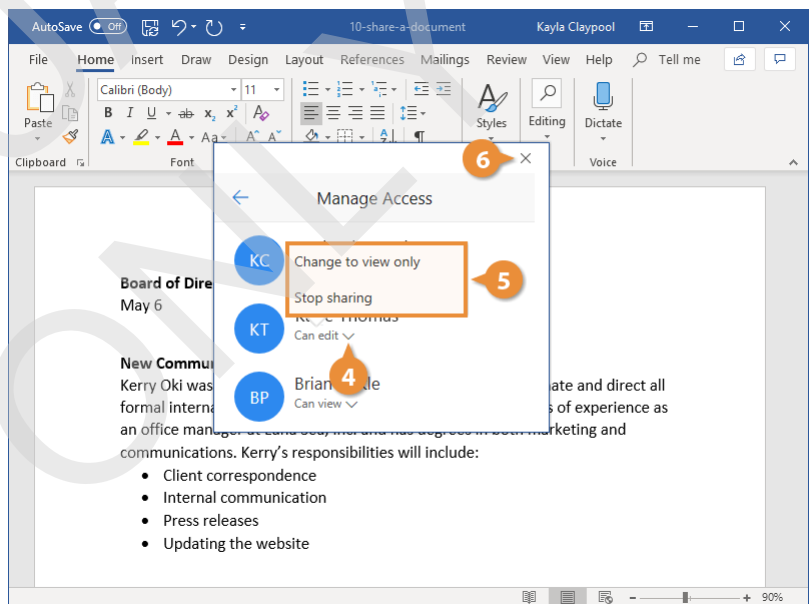
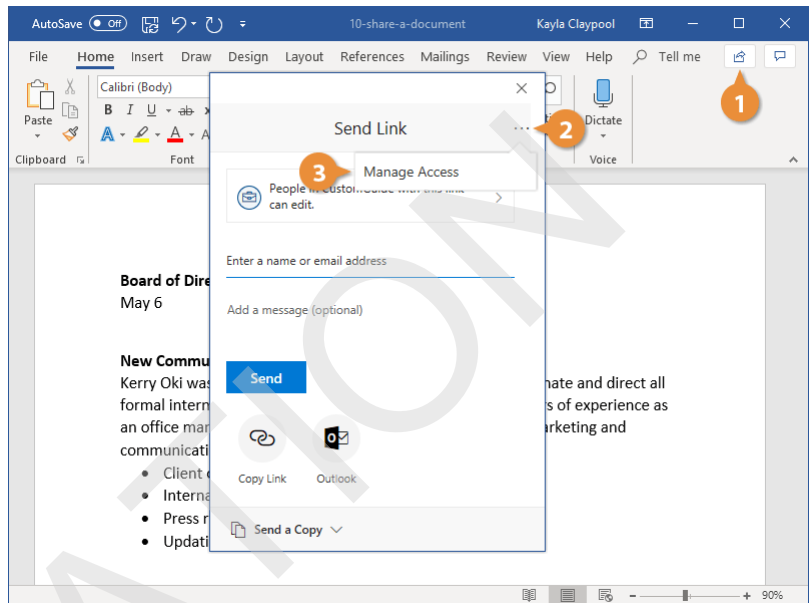
4 Click a permissions list arrow.

5 Select a permissions level.

- **Can edit:** Anyone who has been invited to the document can make edits.
- **Can view:** Anyone who has been invited is only able to view the document, not make changes.

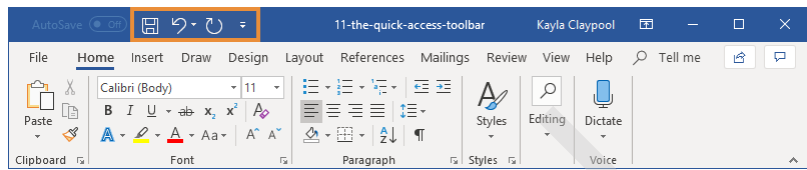
6 Click **Close**.

The permissions are updated.



# The Quick Access Toolbar

The Quick Access Toolbar holds a few buttons for commands that you'll use often, such as save, undo, redo, and repeat. They'll always be available, no matter which ribbon tab you're on.



## Customize the Quick Access Toolbar

If the Quick Access Toolbar doesn't contain enough of your frequently used commands, you can customize it by adding or deleting commands.

- 1 Click the **Customize Quick Access Toolbar** button.

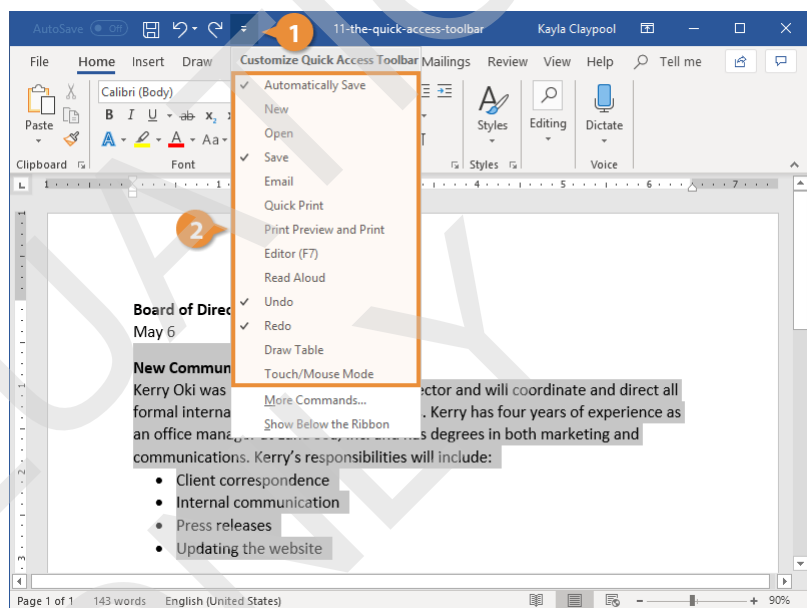
A list appears and displays some commands you can add.

- 2 Select the command you want to add.

The button is added to the toolbar.

**Tip:** You can find all the available commands you can add by selecting **More Commands**, which opens the Word Options dialog box.

**Tip:** To remove a command, select a command with a checkmark to deselect it.



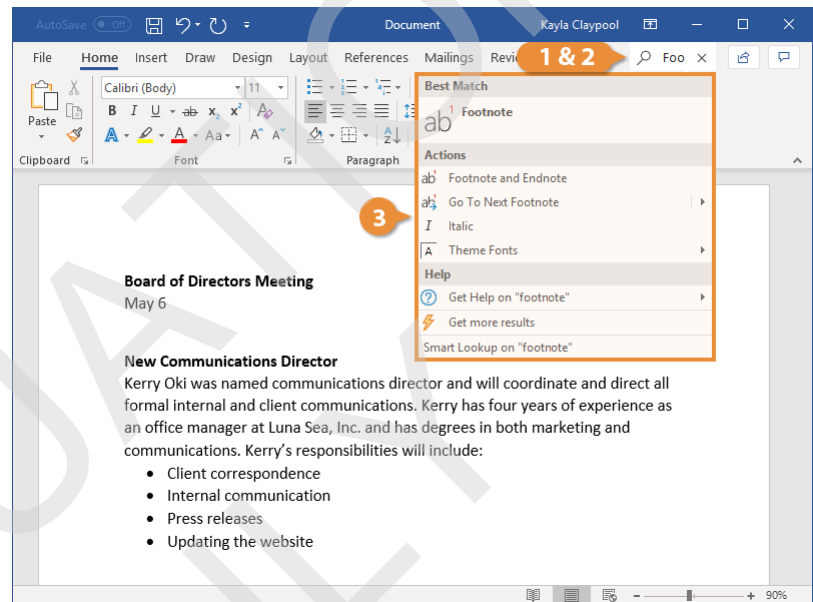
# Help

When you don't know how to do something in Word, look up your question with Help. Help can answer your questions, offer tips, and provide help for all of Word's features.

## The Tell Me Field

The Tell Me field is a text field above the ribbon, where you can search for commands and get quick access to them.

- 1 Click in the **Tell Me** field.
- 2 Type what you want to do.  
A menu appears, listing commands related to what you searched for, as well as a link to that topic's help file.
- 3 Select the command you were looking for.



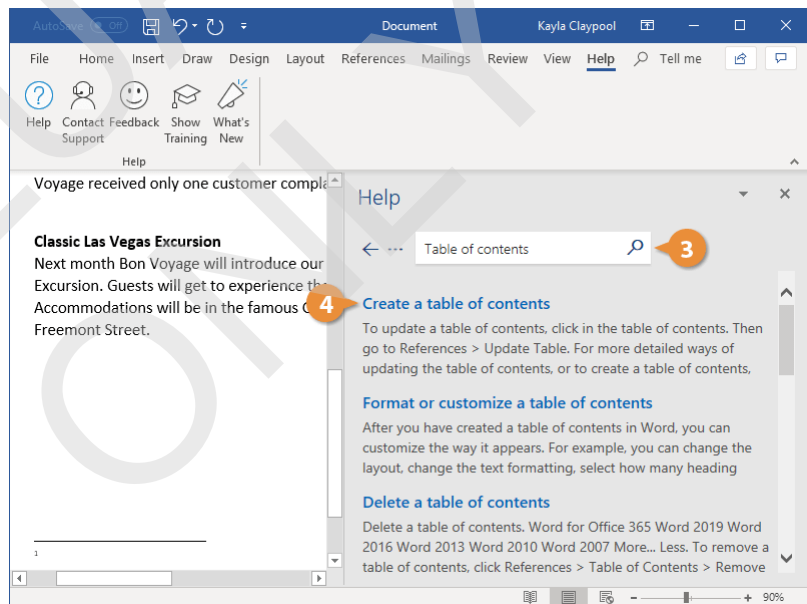
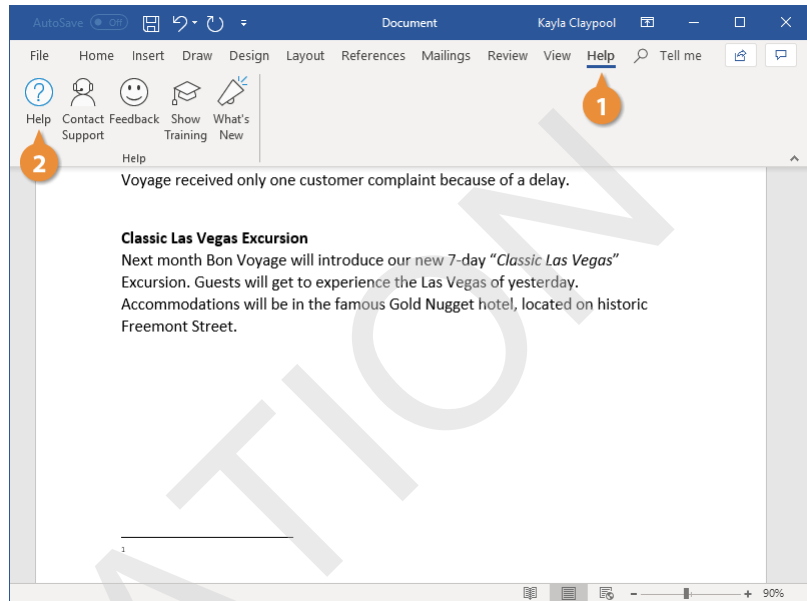
## The Help Pane

You can also open the Help window to browse topics and read the Help files.

- 1 Click the **Help** tab.
- 2 Click the **Help** button.  
The Help pane appears, listing several common help topic categories.
- 3 Type a help topic in the Search field at the top and click the **Search** button.
- 4 Select a help topic.

The topic page opens for you to read.

**Shortcut:** Press **F1** to quickly open the Help pane.



# Document Properties

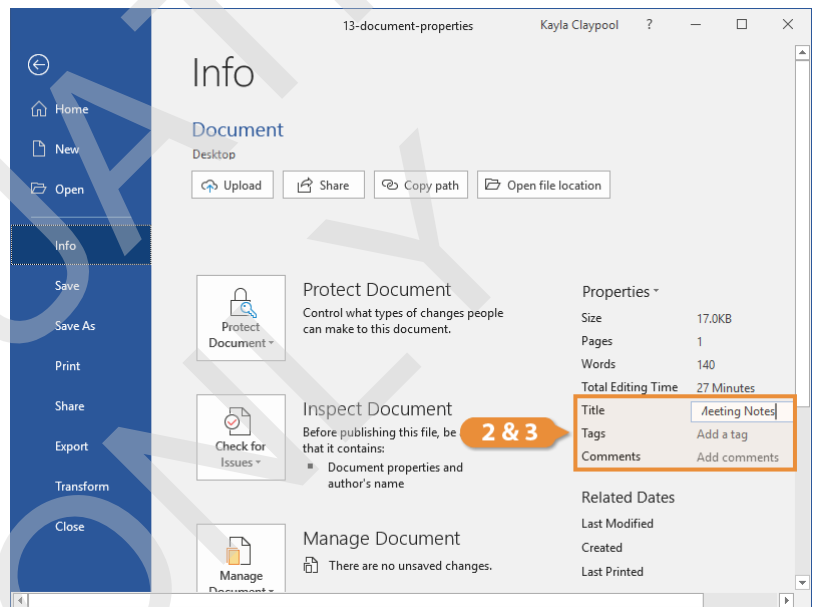
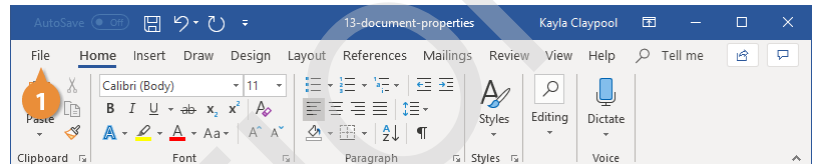
Document properties are bits of information that describe and identify a document, such as a title, author name, and subject.

## View and Edit Document Properties

The basic document properties are easy to find and update.

- 1 Click the **File** tab.  
The Info screen here will show the basic document properties in a column on the right.  
**Tip:** The Info screen is the default when the File tab is opened. If another screen appears instead, click **Info**.
- 2 Click a property field.
- 3 Fill in the property field, then click outside of the field.

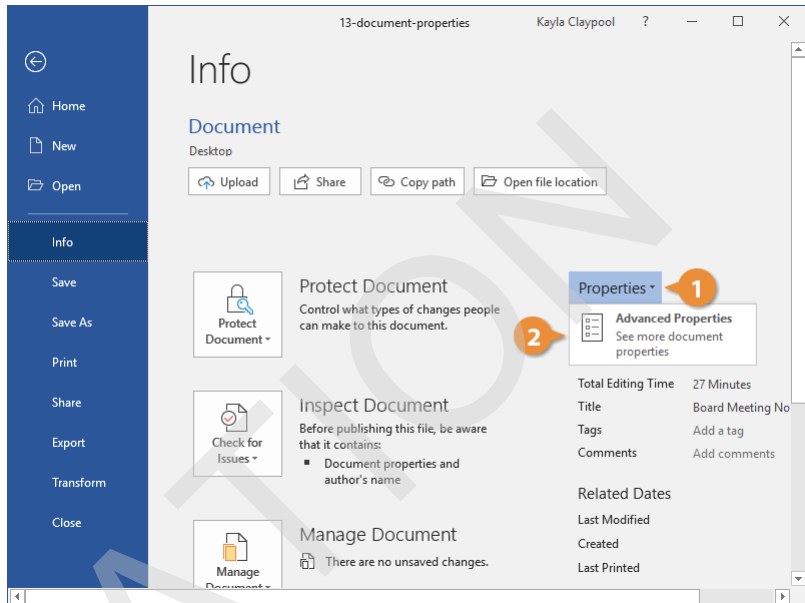
The property is saved.



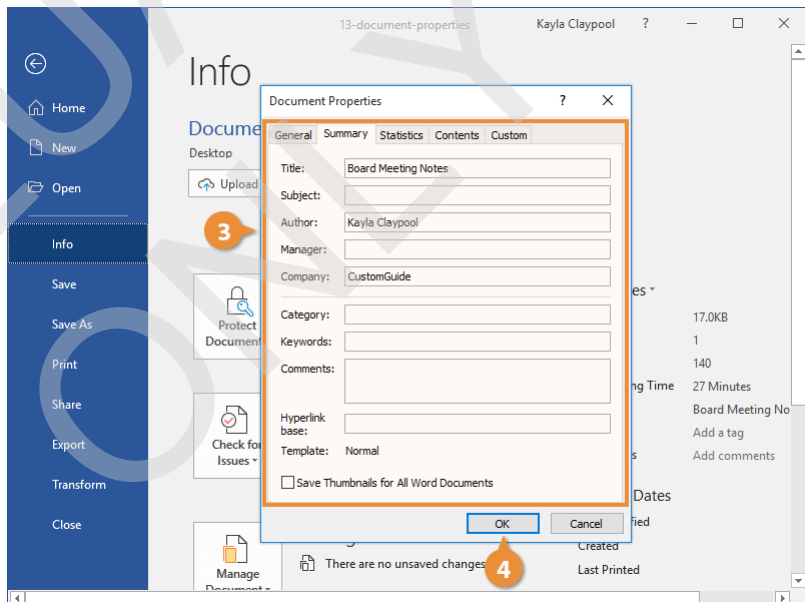
## View Advanced Properties

There are additional advanced property fields that you can fill out beyond the basic fields on the Info screen.

- 1 From the Info screen, click the **Properties** button.
- 2 Select **Advanced Properties**.  
The Document Properties dialog box opens to the Summary tab, where there are a few more properties to fill out.
- 3 Edit the document properties.  
**Tip:** In addition to the fields on the Summary tab, there are even more advanced properties available on the Custom tab.
- 4 Click **OK**.



The advanced properties are saved.



# Check Accessibility and Compatibility

If your document has a lot of advanced effects, graphics, tables, or videos, you may run into trouble opening it in older versions of Word. It may also be difficult for people with disabilities to read. Word can automatically check your document to find potential compatibility and accessibility problems.

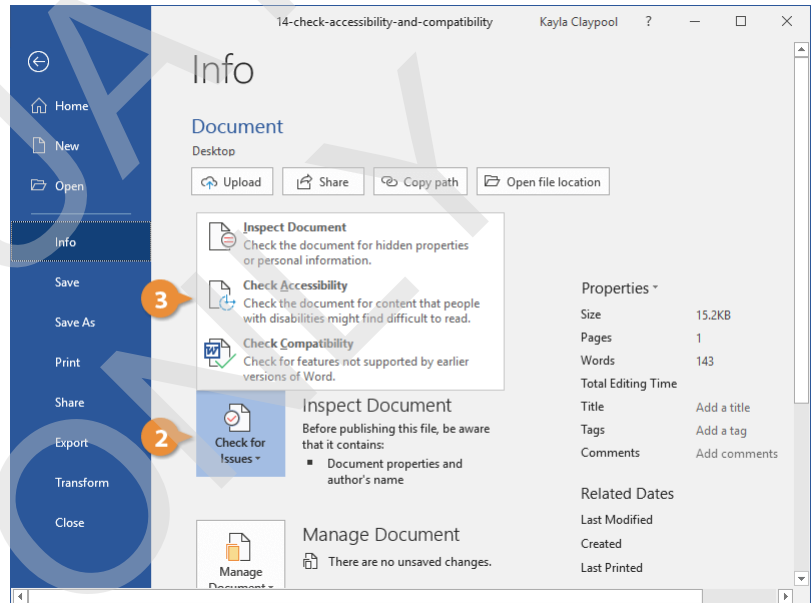
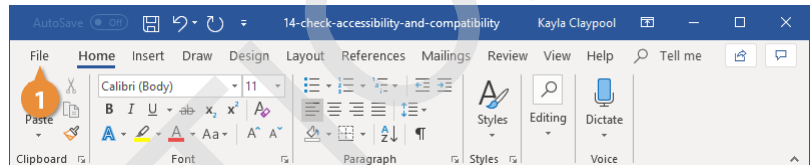
## Check Accessibility

The accessibility checker examines your document for anything that would make it difficult for people with disabilities to read.

- 1 Click the **File** tab.
- 2 Click the **Check for Issues** button.
- 3 Select **Check Accessibility**.

The Accessibility pane appears on the right, listing anything in the document that would make it less accessible.

Some common problems include the lack of alternative text on images or meaningful hyperlink text, color-coding without additional context, and headings that aren't in a logical order for a screen reader to parse.



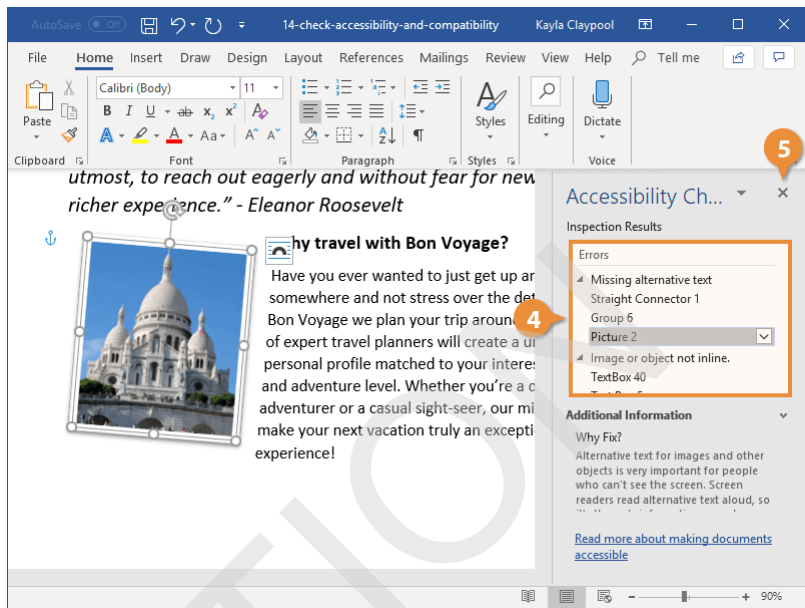
4

Select a result.

Additional information appears underneath the results, letting you know why this result is a problem and how to fix it.

5

Click the **Close** button when you've finished looking over the results and have made the appropriate changes.



## Check Compatibility

You can also check a document for compatibility problems with previous versions of Word.

- 1 Click the **File** tab.
- 2 Click the **Check for Issues** button.
- 3 Select **Check Compatibility**.

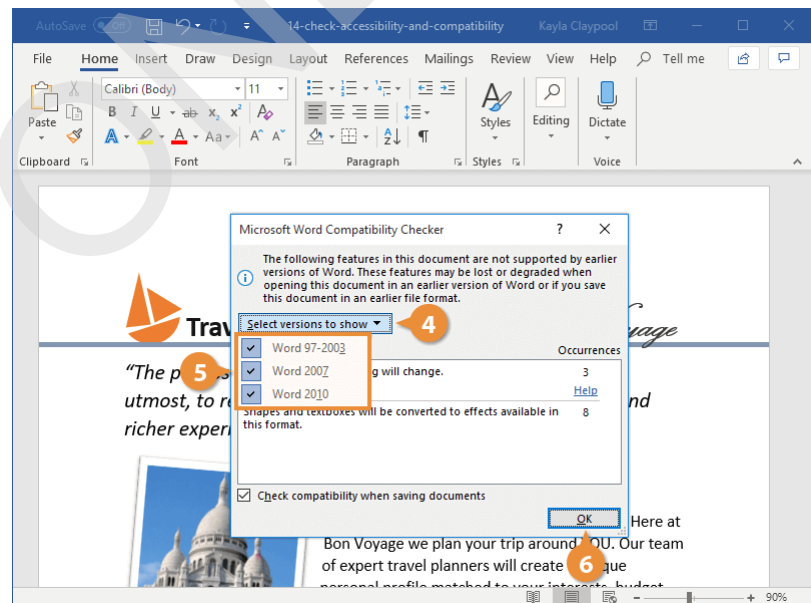
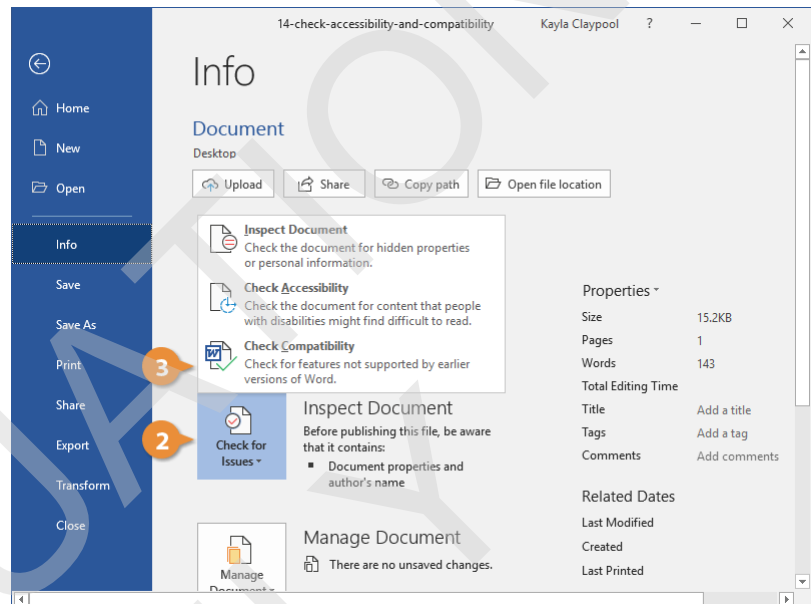
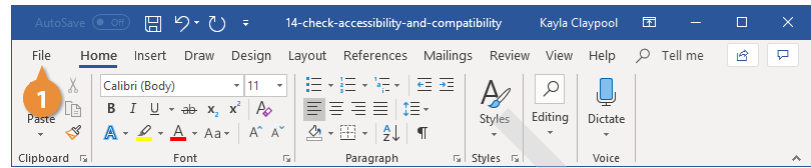
The Compatibility Checker window appears, listing anything in the document that's not compatible with earlier versions of Word.

- 4 Click the **Select versions to show** button.
- 5 Toggle which versions of Word to check compatibility for.

By turning off the versions of Word that you don't need to worry about, you can get a better sense of what incompatibilities are important to you.

- 6 Click **OK**.

The window closes, and now you have a better idea of accessibility issues and incompatibilities in your document.



# Close and Exit

When you're done working with a file, it's a good idea to close it so you don't bog down your computer with unused programs.

## Close a Document

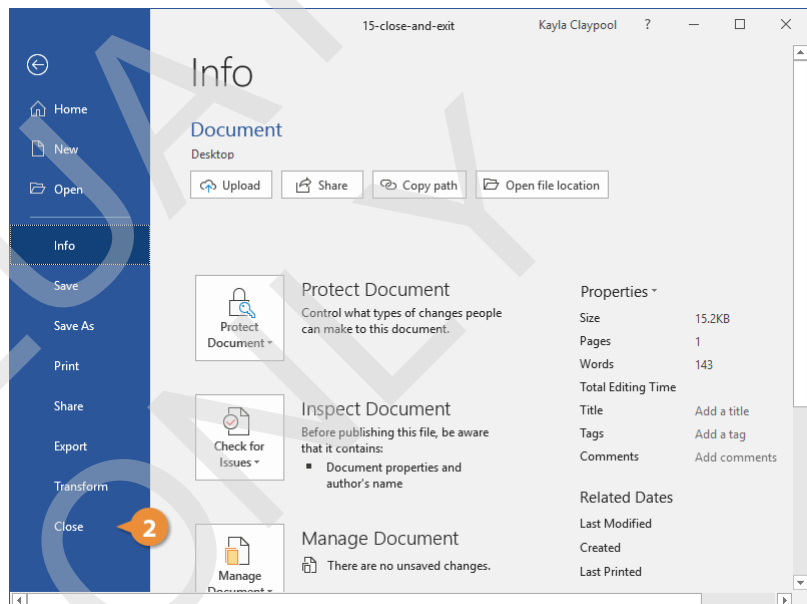
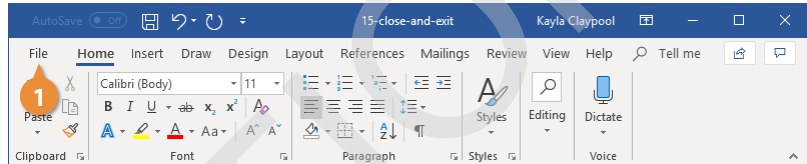
Each document window must be closed individually. If you only have one file open, you can close it from the File menu and keep Word running.

- 1 Click the **File** tab.
- 2 Click **Close**.

The file is closed, but Word is still running. You can still browse for a file to open, create a new document from a template, and access Word's options.

**Shortcut:** If you have multiple Word documents open, clicking the **Close** button on the title bar will close each document individually.

**Tip:** If you have not saved the document since making changes, a dialog box will appear asking if you want to save the changes to the document. Click **Save** if you wish to save your changes, click **Don't Save** if you do not want to save your changes, and click **Cancel** if you do not want to close the document.



## Close Word

If you only have one Word document open, closing the document window will also quit Word entirely.

**1** Click the **Close** button.

Word quits as the window closes.

