



Microsoft®

Word 2013 Advanced Quick Reference Guide



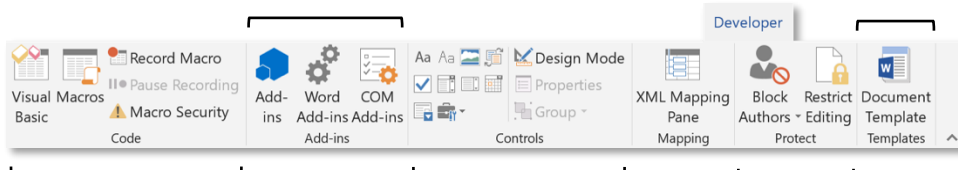
Free Cheat Sheets
Visit ref.customguide.com

The Developer Tab

The **Add-ins** group configures add-ins to extend the functionality of Word.

The **Mapping** group lets you link content controls to external XML

The **Templates** group lets you switch document templates and other add-ins.



The **Code** group contains commands to record and edit macros, as well as control the level of macro security in Word.

The **Controls** group lets you add form controls to a document. Click **Design Mode**, then click a form control button to insert it. Click **Design Mode** again when you're finished.

The **Protect** group lets you restrict the ability to make changes to a document (or certain parts of a document).

Forms

Add Forms to a Document

Enable the Developer Tab: Before adding forms, you must enable the Developer tab on the ribbon. Click the **File** tab, click **Options**, click **Customize Ribbon**, check the **Developer** check box, and click **OK**.

Add a Form Control: Place the text cursor where you want the form control, click the **Developer** tab, click the **Design Mode** button in the Controls group, and click the button for the form control you want to add. Click the **Design Mode** button again when you're finished adding form controls.

Finalize a Form: Click the **Developer** tab and click the **Restrict Editing** button to open the Restrict Editing pane. Check the **Editing Restrictions** check box, click the **Editing Restrictions** list arrow, and select **Filling in forms**. Click the **Yes, Start Enforcing Protections** button, enter a password (optional), and click **OK**.

Types of Form Controls

Different types of form controls allow a user to enter different types of data into a form.

Rich Text allows users to enter text that can be formatted with different fonts and font styles.

Plain Text allows users to enter text, but not to format that text.

Picture allows the user to add a picture from their computer or an online location to the form.

Check Box places a form with a check box that the user can check or uncheck.

Combo Box adds a list with a text box, where users can choose an option or enter their own.

Drop-Down List adds a list with several options that a user can choose from.

Date Picker lets the user choose a date from a calendar.

Repeating Section contains other types of content controls and repeats as many times as you need it.

Legacy Types of content controls were used in older versions of Word. You can still use them in a Word 97-2003 document.

Collaborate in Word

Share a Document: Make sure the document is shared to an online-accessible location, such as OneDrive or SharePoint. Click the **Share** button above the ribbon and enter someone's email address in the Invite People field (or, click the **Address Book** button and select someone in the Address Book dialog box). Choose their permission level by clicking the permissions list arrow and selecting a level. Enter a short message (optional), then click the **Share** button.

Highlight Text: Select the text you want to highlight, click the **Text Highlight Color** button list arrow on the Home tab, and select a highlight color.

Insert a Comment: Select the text you want to add a comment to, click the **Review** tab, click the **New Comment** button, and add your comment. Click outside of the comment field when you're finished.

Delete a Comment: Click a comment to select it, click the **Review** tab, and click the **Delete** button.

Reply to a Comment: Click a comment to select it, and click the **Reply** button in the comment. Type your response, and click outside the comment field when you're finished.

Show / Hide Comments: Click the **Review** tab and click the **Show Comments** button to toggle it on or off.

Toggle Track Changes: Click the **Review** tab and click the **Track Changes** button in the Tracking group.

View Markup: Click the **Review** tab, click the **Show Markup** button in the Tracking group, and select a type of markup to show or hide.

Review Revisions: Click the **Review** tab, then click the **Next Change** and **Previous Change** buttons in the Changes group. Click the **Accept** button to accept a change, or the **Reject** button to reject it.

Compare Two Documents: Click the **Review** tab, click the **Compare** button, and select **Compare**. Select the original document from the **Original Document** list arrow (or click the **Browse** icon and select it), then select the revised document from the **Revised Document** list arrow (or click the **Browse** icon and select it). Click the **More** button and select what types of differences to look for (optional). Click **OK**.

Add Line Numbers: Click the **Layout** tab, click the **Line Numbers** button, and select an option.

Collaborate in Word

Customize Line Numbers: Click the **Layout** tab, click the **Line Numbers** button, and select **Line Numbering Options** to open the Page Setup dialog box. Click the **Line Numbers** button. Customize where the line numbers start, how far they appear from the text, and how often they appear. Click **OK**, then click **OK** again.

Protect a Document: Click the **File** tab, click the **Protect Document** button, and select **Mark as Final**. Click **OK** in both the confirmation dialog boxes.

Password Protect a Document: Click the **File** tab, click the **Protect Document** button, and select **Encrypt with a Password**. Enter a password and click **OK**, then enter that password again to confirm it, and click **OK** again.

Remove a Password: Click the **File** tab, click the **Protect Document** button, select **Encrypt with a Password**, remove the password from the text field and click **OK**.

Inspect a Document: Click the **File** tab, click the **Check for Issues** button, and select **Inspect a Document**. Select the types of content you want to check for, then click **Inspect**. After inspection, click **Remove All** for any content that you want to remove, then click **Close**.

Macros

Enable the Developer Tab: Before adding macros, you must enable the Developer tab on the ribbon. Click the **File** tab, click **Options**, click **Customize Ribbon**, check the **Developer** check box, and click **OK**.

Record a Macro: Click the **Developer** tab, click the **Record Macro** button, and give the macro a name. Click either **Button** or **Keyboard** to assign a button or keyboard shortcut to the new macro (optional). Click **OK**. Perform the tasks you want to record, then click the **Stop Recording** button.

Run a Macro: Place the text cursor where you want the macro to run. Click the **Developer** tab, click the **Macros** button, select a macro, and click **Run**.

Edit a Macro: Click the **Developer** tab, click the **Macros** button, select a macro, and click **Edit**. Modify the macro using the Visual Basic editor, then close Visual Basic.

Advanced Documents

Customize Word's Options: Click the **File** tab and click **Options**. Select a category on the left, and then customize options on the right. Click **OK** when you're finished.

Customize the Ribbon: Click the **File** tab, click **Options**, then click the **Customize Ribbon** tab. Select and expand a ribbon tab, then select and expand a group. Select a command from the left column, then click **Add** to add it, or select a command from the right column and click **Remove** to remove it from the ribbon.

Advanced Documents

Change Word's Default Font: Start in a new, blank document. Open the Font dialog box by clicking the **Font** group's dialog box launcher. Choose the new default font or font style, then click the **Set as Default** button. Select **All documents based on the Normal template**, then click **OK**.

Create a Building Block: Select the text or objects you want to use as a building block. Then, click the **Insert** tab, click the **Explore Quick Parts** button, and select **Save Selection to Quick Parts Gallery**.

Insert a Building Block: Place the text cursor where you want a building block placed. Click the **Insert** tab, click the **Explore Quick Parts** button, and either select a building block from the menu, or select **Building Blocks Organizer**. Select a building block, and then click **Insert**.

Find and Replace Using Wildcards: Click the **Find** button list arrow, select **Advanced Find**, and expand the dialog box by clicking the **More** button. Check the **Use Wildcards** check box, then while entering a search phrase in the **Find What** field, click the **Special** button and select a wildcard.

Wildcard Examples

?	any single character
*	any number of characters
[]	one of these characters
[-]	one of these characters in a range
[!]	none of the specified characters
<	beginning of a word
>	end of a word
@	one or more instances of a character
{n}	exactly <i>n</i> instances of a character
{n, }	at least <i>n</i> instances of a character
{n, m}	between <i>n</i> and <i>m</i> instances of a character

Find and Replace Special Characters: Click the **Find** button list arrow, select **Advanced Find**, and expand the dialog box by clicking the **More** button. While entering a search phrase in the **Find What** field, click the **Special** button and select a special character.

Edit a Document in Multiple Languages: Select the text in another language, click the **Review** tab, click the **Language** button, and select **Set Proofing Language**. Select a language and click **OK**.

Add Additional Editing Languages: Click the **Review** tab, click the **Language** button, and select **Language Preferences**. Click the **Add additional editing languages** list arrow and select a language. Click **Add**, then click **OK**.

Insert a Date and Time Field: Click the **Insert** tab, click the **Date and Time** button, select a date format, check the **Update Automatically** check box, and click **OK**.

Advanced Documents

Insert a Field: Click the **Insert** tab, click the **Explore Quick Parts** button, and select **Field**. Select a field category, then a field. Click **OK**.

View Field Codes: Right-click a field and select **Toggle Field Codes**.

Mail Merge

1 – Start the Mail Merge Wizard: Click the **Mailings** tab, click the **Start Mail Merge** button, and select **Step by Step Mail Merge Wizard**.

2 – Choose a Document Type: In the Mail Merge pane, select a document type, then click **Next**.

3 – Select a Document: In the Mail Merge pane, select whether to use the current document, start a new document from a template, or use another existing file, then click **Next**.

4 – Select Recipients: In the Mail Merge pane, select whether to use an existing list, select contacts from Outlook, or type a new list.

If using an existing list, click the **Browse** button, select a file with a list of recipients, and click **Open**. Select which contacts in the list you want to use by checking or unchecking them, then click **OK**.

If selecting contacts from Outlook, click the **Choose Contacts Folder** button, select a contacts folder to import, and click **OK**. Select which contacts in the list you want to use by checking or unchecking them, then click **OK**.

If typing a new list, click the **Create** button, then fill out the fields for each address. Click **OK** when finished.

Click **Next**.

5 – Write Your Letter: Place the text cursor where you want an element, then click the button for the element you want to add (such as an **Address Block** or a **Greeting Line**), choose an element's options, then click **OK**. Or, click the **More Items** button, select a specific field to insert, click **Insert**, and then click **Close**. When you've added all the fields you need, click **Next**.

6 – Preview Your Letter: In the Mail Merge pane, click the << and >> buttons to preview the placeholders filled in with a recipient's data. When you're finished previewing, click **Next**.

7 – Complete the Merge: In the Mail Merge pane, click **Print** to print the finished mail merged documents, or click **Edit individual letters** to create a new document for all or some of the records.

Close the Mail Merge pane when you're finished with the merge.

Custom@Guide

Get More Free Quick References!

Visit ref.customguide.com to download.



Office 365

- [Access](#)
- [Excel](#)
- [Office 365](#)
- [OneNote](#)
- [Outlook](#)
- [PowerPoint](#)
- [Teams](#)
- [Word](#)

G Suite

- [Classroom](#)
- [G Suite](#)
- [Gmail](#)
- [Google Calendar](#)
- [Google Docs](#)
- [Google Drive](#)
- [Google Sheets](#)
- [Google Slides](#)

OS

- [Mac OS](#)
- [Windows 10](#)

Productivity

- [Digital Literacy](#)
- [Salesforce](#)

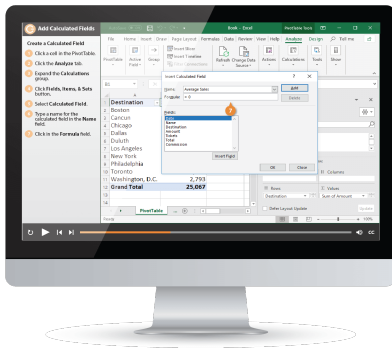
Soft Skills

- [Business Writing](#)
- [Email Etiquette](#)
- [Manage Meetings](#)
- [Presentations](#)
- [Security Basics](#)
- [SMART Goals](#)

+ more, including [Spanish versions](#)

Loved by Learners, Trusted by Trainers

Please consider our other training products!



Interactive eLearning

Get hands-on training with bite-sized tutorials that recreate the experience of using actual software. SCORM-compatible lessons.



Customizable Courseware

Why write training materials when we've done it for you? Training manuals with unlimited printing rights!

Over 3,000 Organizations Rely on CustomGuide



“The toughest part [in training] is creating the material, which CustomGuide has done for us. Employees have found the courses easy to follow and, most importantly, they were able to use what they learned immediately.”

Contact Us!

sales@customguide.com

612.871.5004