



Microsoft®

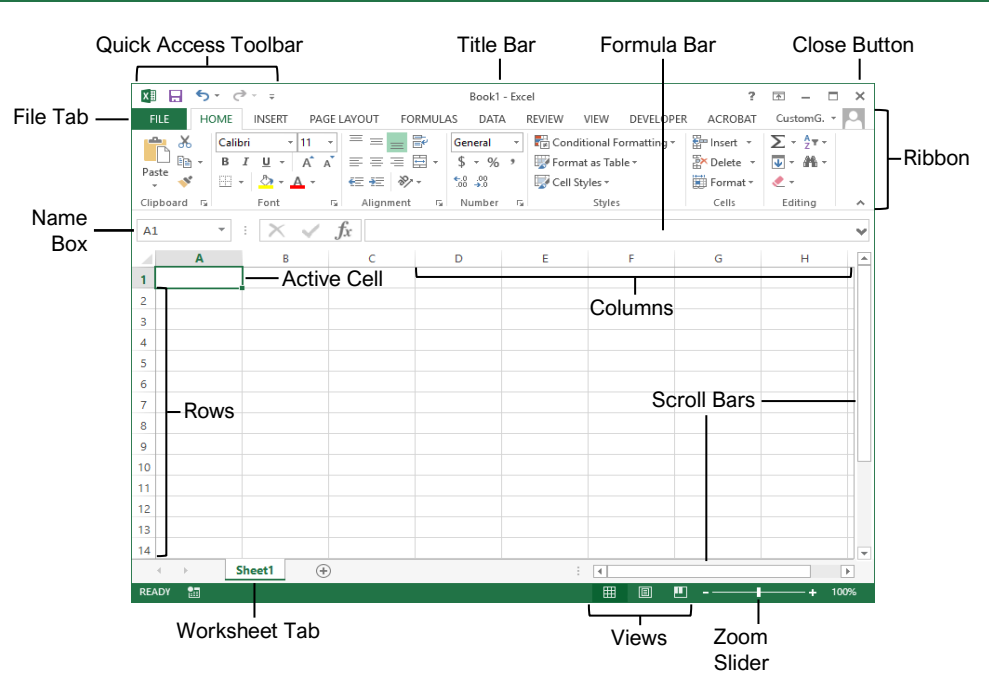
Excel 2013 Basic

Quick Reference Guide



Free Cheat Sheets
Visit ref.customguide.com

The Excel 2013 Program Screen



Keyboard Shortcuts

General	
Open a workbook.....	Ctrl + O
Create a new workbook.....	Ctrl + N
Save a workbook.....	Ctrl + S
Print a workbook.....	Ctrl + P
Close a workbook.....	Ctrl + W
Help.....	F1
Spell check.....	F7
Calculate worksheets.....	F9
Create absolute reference ...	F4

Navigation	
Move between cells.....	↑, ↓, ←, →
Right one cell.....	Tab
Left one cell.....	Shift + Tab
Down one cell.....	Enter
Up one cell.....	Shift + Enter
Down one screen.....	Page Down
To first cell of active row.....	Home
Enable End mode.....	End
To cell A1.....	Ctrl + Home
To last cell.....	Ctrl + End

Getting Started

- ←
- Info
- New
- Open
- Save
- Save As
- Print
- Share
- Export
- Publish
- Close
- Account
- Options

Create a Workbook: Click the **File** tab and select **New** or press **Ctrl + N**. Double-click a workbook.

Open a Workbook: Click the **File** tab and select **Open** or press **Ctrl + O**. Select a recent file or navigate to the location where the file is saved.

Preview and Print a Workbook: Click the **File** tab and select **Print**.

Undo: Click the **Undo** button on the Quick Access Toolbar.

Redo or Repeat: Click the **Redo** button on the Quick Access Toolbar. The button turns to Repeat once everything has been re-done.

Use Zoom: Click and drag the zoom slider to the left or right.

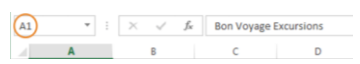
Select a Cell: Click a cell or use the keyboard arrow keys to select it.

Select a Cell Range: Click and drag to select a range of cells. Or, press and hold down the **Shift** key while using the arrow keys to move the selection to the last cell of the range.

Select an Entire Worksheet: Click the **Select All** button where the column and row headings meet.

Select Non-Adjacent Cells: Click the first cell or cell range, hold down the **Ctrl** key, and select any non-adjacent cell or cell range.

Cell Address: Cells are referenced by an address made from their column letter and row number, such as cell A1, B2, etc.



Jump to a Cell: Click in the **Name Box**, type the cell address you want to go to, and press **Enter**.

Change Views: Click a **View** button in the status bar. Or, click the **View** tab and select a view.

Recover an Unsaved Workbook: Restart Excel. If a workbook can be recovered, it will appear in the Document Recovery pane. Or, click the **File** tab, click **Recover unsaved workbooks** to open the pane, and select a workbook from the pane.

Editing	
Cut.....	Ctrl + X
Copy.....	Ctrl + C
Paste.....	Ctrl + V
Undo.....	Ctrl + Z
Redo.....	Ctrl + Y
Find.....	Ctrl + F
Replace.....	Ctrl + H
Edit active cell.....	F2
Clear cell contents.....	Delete

Formatting	
Bold.....	Ctrl + B
Italics.....	Ctrl + I
Underline.....	Ctrl + U
Open Format Cells dialog box.....	Ctrl + Shift + F
Select All.....	Ctrl + A
Select entire row.....	Shift + Space
Select entire column.....	Ctrl + Space
Hide selected rows.....	Ctrl + 9
Hide selected columns.....	Ctrl + 0

Edit a Workbook

Edit a Cell's Contents: Select a cell and click in the Formula Bar, or double-click the cell. Edit the cell's contents and press **Enter**.

Clear a Cell's Contents: Select the cell(s) and press the **Delete** key. Or, click the **Clear** button on the Home tab and select **Clear Contents**.

Cut or Copy Data: Select cell(s) and click the **Cut** or **Copy** button on the Home tab.

Paste Data: Select the cell where you want to paste the data and click the **Paste** button in the Clipboard group on the Home tab.

Preview an Item Before Pasting: Place the insertion point where you want to paste, click the **Paste** button list arrow in the Clipboard group on the Home tab, and hold the mouse over a paste option to preview.

Paste Special: Select the destination cell(s), click the **Paste** button list arrow in the Clipboard group on the Home tab, and select **Paste Special**. Select an option and click **OK**.

Move or Copy Cells Using Drag and Drop: Select the cell(s) you want to move or copy, position the pointer over any border of the selected cell(s), then drag to the destination cells. To copy, hold down the **Ctrl** key before starting to drag.

Find and Replace Text: Click the **Find & Select** button, select **Replace**. Type the text you want to find in the Find what box. Type the replacement text in the Replace with box. Click the **Replace All** or **Replace** button.

Check Spelling: Click the **Review** tab and click the **Spelling** button. For each result, select a suggestion and click the **Change/Change All** button. Or, click the **Ignore/Ignore All** button.

Insert a Column or Row: Right-click to the right of the column or below the row you want to insert. Select **Insert** in the menu, or click the **Insert** button on the Home tab.

Delete a Column or Row: Select the row or column heading(s) you want to remove. Right-click and select **Delete** from the contextual menu, or click the **Delete** button in the Cells group on the Home tab.

Hide Rows or Columns: Select the rows or columns you want to hide, click the **Format** button on the Home tab, select **Hide & Unhide**, and select **Hide Rows** or **Hide Columns**.

Basic Formatting

Change Cell Alignment: Select the cell(s) you want to align and click a vertical alignment button, or a horizontal alignment button in the Alignment group on the Home tab.

Basic Formatting

Format Text: Use the commands in the Font group on the Home tab, or click the dialog box launcher in the Font group to open the dialog box.

Format Values: Use the commands in the Number group on the Home tab, or click the dialog box launcher in the Number group to open the Format Cells dialog box.

Wrap Text in a Cell: Select the cell(s) that contain text you want to wrap and click the **Wrap Text** button on the Home tab.

Merge Cells: Select the cells you want to merge. Click the **Merge & Center** button list arrow on the Home tab and select a merge option.

Cell Borders and Shading: Select the cell(s) you want to format. Click the **Borders** button and/or the **Fill Color** button and select an option to apply to the selected cell.

Copy Formatting with the Format Painter: Select the cell(s) with the formatting you want to copy. Click the **Format Painter** button in the Clipboard group on the Home tab. Then, select the cell(s) you want to apply the copied formatting to.

Adjust Column Width or Row Height: Click and drag the right border of the column header or the bottom border of the row header. Double-click the border to AutoFit the column or row according to its contents.

Basic Formulas

Enter a Formula: Select the cell where you want to insert the formula. Type **=** and enter the formula using values, cell references, operators, and functions. Press **Enter**.

Insert a Function: Select the cell where you want to enter the function and click the **Insert Function** button next to the formula bar.

Reference a Cell in a Formula: Type the cell reference (for example, B5) in the formula or click the cell you want to reference.

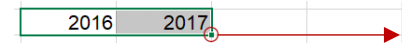
SUM Function: Click the cell where you want to insert the total and click the **Sum** button in the Editing group on the Home tab. Enter the cells you want to total, and press **Enter**.

MIN and MAX Functions: Click the cell where you want to place a minimum or maximum value for a given range. Click the **Sum** button list arrow on the Home tab and select either **Min** or **Max**. Enter the cell range you want to reference, and press **Enter**.

COUNT Function: Click the cell where you want to place a count of the number of cells in a range that contain numbers. Click the **Sum** button list arrow on the Home tab and select **Count Numbers**. Enter the cell range you want to reference, and press **Enter**.

Insert Objects

Complete a Series Using AutoFill: Select the cells that define the pattern, i.e. a series of months or years. Click and drag the fill handle to adjacent blank cells to complete the series.



Insert an Image: Click the **Insert** tab on the ribbon, click either the **Pictures** or **Online Pictures** button in the Illustrations group, select the image you want to insert, and click **Insert**.

Insert a Shape: Click the **Insert** tab on the ribbon, click the **Shapes** button in the Illustrations group, and select the shape you wish to insert.

Hyperlink Text or Images: Select the text or graphic you want to use as a hyperlink. Click the **Insert** tab, then click the **Link** button. Choose a type of hyperlink in the left pane of the Insert Hyperlink dialog box. Fill in the necessary informational fields in the right pane, then click **OK**.

Modify Object Properties and Alternative Text: Right-click an object. Select **Size and Properties** in the menu, and make the necessary modifications under the Properties and Alt Text headings.

View and Manage Worksheets

Insert a New Worksheet: Click the **Insert Worksheet** button next to the sheet tabs below the active sheet. Or, press **Shift + F11**.

Delete a Worksheet: Right-click the sheet tab and select **Delete** from the menu.

Rename a Worksheet: Double-click the sheet tab, enter a new name for the worksheet, and press **Enter**.

Change a Worksheet's Tab Color: Right-click the sheet tab, select **Tab Color**, and choose the color you want to apply.

Move or Copy a Worksheet: Click and drag a worksheet tab left or right to move it to a new location. Hold down the **Ctrl** key while clicking and dragging to copy the worksheet.

Freeze Panes: Activate the cell where you want to freeze the window, click the **View** tab on the ribbon, click the **Freeze Panes** button in the Window group, and select an option from the list.

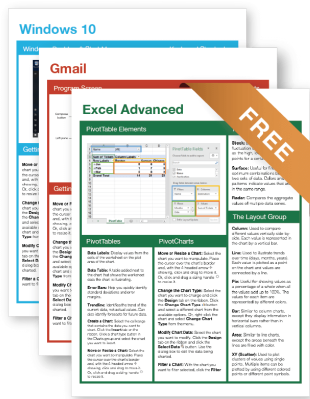
Select a Print Area: Select the cell range you want to print, click the **Page Layout** tab on the ribbon, click the **Print Area** button, and select **Set Print Area**.

Adjust Page Margins, Orientation, Size, and Breaks: Click the **Page Layout** tab on the ribbon and use the commands in the Page Setup group, or click the dialog box launcher in the Page Setup group to open the Page Setup dialog box.

Custom@Guide

Get More Free Quick References!

Visit ref.customguide.com to download.



Office 365

- [Access](#)
- [Excel](#)
- [Office 365](#)
- [OneNote](#)
- [Outlook](#)
- [PowerPoint](#)
- [Teams](#)
- [Word](#)

G Suite

- [Classroom](#)
- [G Suite](#)
- [Gmail](#)
- [Google Calendar](#)
- [Google Docs](#)
- [Google Drive](#)
- [Google Sheets](#)
- [Google Slides](#)

OS

- [Mac OS](#)
- [Windows 10](#)

Productivity

- [Digital Literacy](#)
- [Salesforce](#)

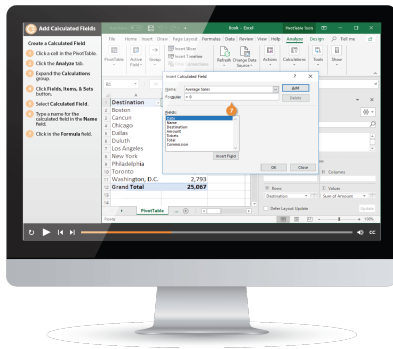
Soft Skills

- [Business Writing](#)
- [Email Etiquette](#)
- [Manage Meetings](#)
- [Presentations](#)
- [Security Basics](#)
- [SMART Goals](#)

+ more, including [Spanish versions](#)

Loved by Learners, Trusted by Trainers

Please consider our other training products!



Interactive eLearning

Get hands-on training with bite-sized tutorials that recreate the experience of using actual software. SCORM-compatible lessons.



Customizable Courseware

Why write training materials when we've done it for you? Training manuals with unlimited printing rights!

Over 3,000 Organizations Rely on CustomGuide



“The toughest part [in training] is creating the material, which CustomGuide has done for us. Employees have found the courses easy to follow and, most importantly, they were able to use what they learned immediately.”

Contact Us!

sales@customguide.com

612.871.5004