

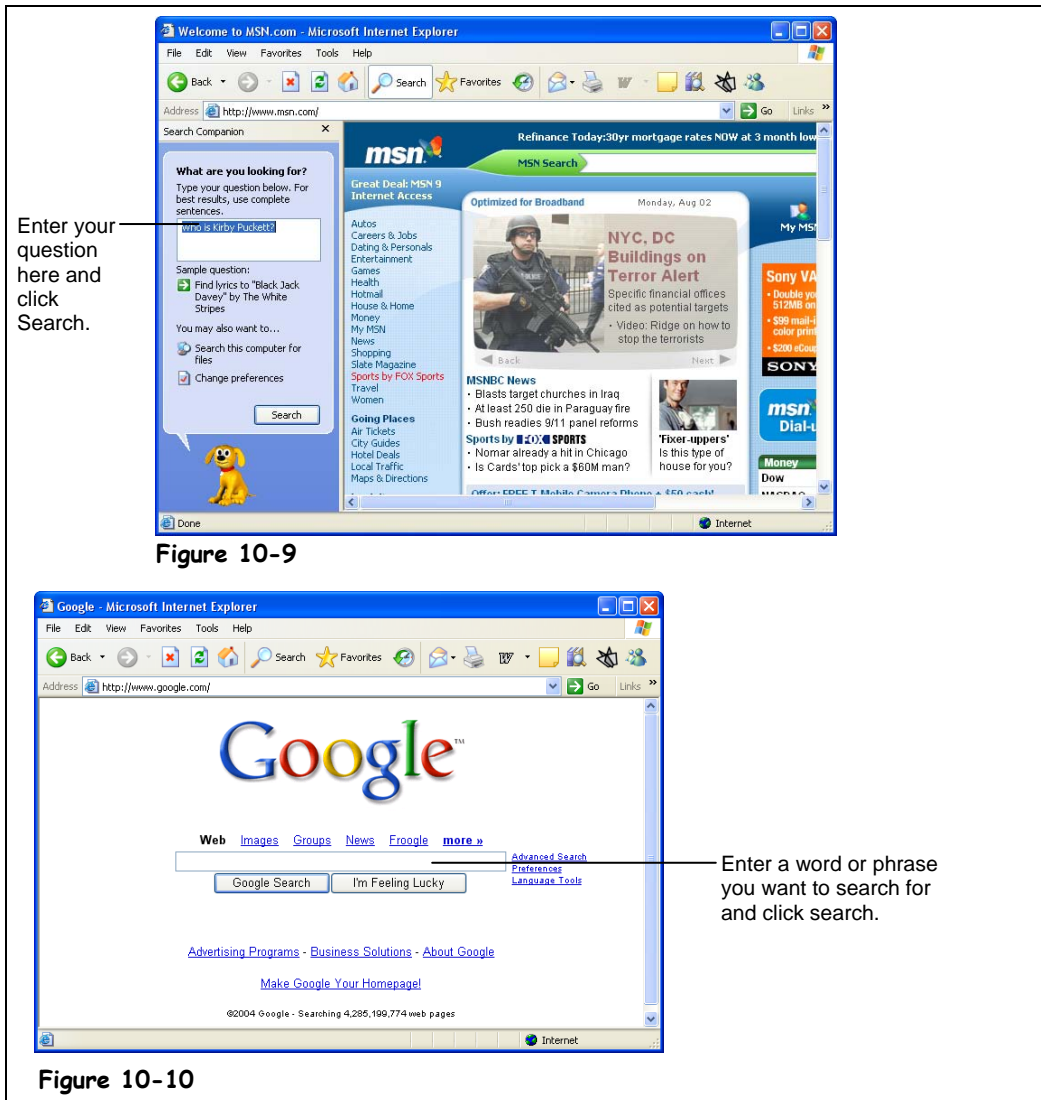
Lesson 10-5: Searching the Web

Figure 10-9

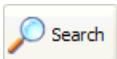
The Search Companion task pane.

Figure 10-10

The Google search engine.



The Internet's greatest strength is also its greatest weakness: with so much information—literally millions of Web pages—it can be extremely difficult to find what you're looking for. Fortunately, there are many search engines that catalog the millions of Web pages on the Internet so that you can find Web pages on topics that interest you, such as Google, Yahoo! and Excite. In this lesson, you'll learn how you can search the Web to find information on the topics you specify.



Search button

1. Make sure your Web browser is open and you are connected to the Internet.
2. Click the **Search button** on the toolbar.

The Search Companion pane appears on the left side of Internet Explorer, as shown in Figure 10-9. This is where you specify what you want to search for.

3. Click the **Search box and type your question.**

For better search results, use complete sentences or several keywords that describe what you're looking for. For example, typing "Where can I find a good oyster restaurant in Chicago?" would yield better results than simply "oysters".

4. Click **Search.**

The Search Companion searches the Web for results using the MSN search engine. The results of the search are shown in the window to the right of the task pane, ranked by relevance.

5. Click the Web page you want to view.

Are you finding irrelevant information in your search results? Then you may have to refine your search. For example, a search on the word "Windows" may result in links to "Anderson[®] Windows," "Stained Glass Windows," and "Microsoft Windows", while a search on the phrase "Microsoft Windows" will result in links to "Microsoft Windows." Some search engines will let you search within your results. For example, you could do a search for "Microsoft Windows" and then further refine your search by searching the results for the word "Networking."

6. Click the Search Companion task pane **Close button.**

You don't have to use the Search Companion to surf the Web—you can go directly to a search engine's Web site and specify what you want to look for there. Table 10-2: *Popular Search Engines on the Web* is by no means a definitive inventory of the search engines that are currently available on the Web, but it lists the best and most popular Web search engines and their Web addresses.

What are you looking for?
Type your question below. For best results, use complete sentences.
Please type your query here, then press <Enter>.

Search Box

Table 10-2: Popular Search Engines on the Web

Site	Web Address	Description
AOL	search.aol.com	The default search engine for America Online subscribers, the AOL search engine isn't bad, but you're probably better off using Google or Yahoo.
Excite	www.excite.com	Excite once had a powerful, highly-rated search engine, but in recent years it has fallen behind the other search engines in terms of features and popularity.
MSN	www.msn.com	The MSN, or Microsoft Network, is not only the default search engine for Internet Explorer; it's also the default home page (surprise, surprise). Even with that enormous advantage, both Google and Yahoo still manage to be the preferred search engines for most Internet users.
Google	www.google.com	Google is the most popular search engine in the world and it's consistently ranked as having the most relevant search results. However, it doesn't contain many features other than its fantastic Web search.
Yahoo	www.yahoo.com	Yahoo is actually more of a directory service than a search engine, but it makes it very easy to find topics, especially if you're new to the Internet.

 **Quick Reference**

To Search the Web for Information Using Internet Explorer:

1. Click the **Search button** on the toolbar.
2. Type the word or phrase you want to search for in the **Search** box and click **Search**.
3. Click the link for the Web page you want to view.
4. Click the **Search button** on the toolbar to close the search panel.

To Search the Web for Information Using a Search Engine:

- Type the Web address for the search engine in the **Address bar** and press <Enter>. Type the word or phrase you want to search for in the Web page's **Search** box and press <Enter>.