

Lesson 6-6: Adjusting the Screen Resolution

Figure 6-12

Lower resolutions (800 by 600) display larger images on the screen; higher resolutions (1024 by 768) display smaller images but let you see more information at once.

Figure 6-13

The Settings tab of the Display Properties dialog box.

Figure 6-14

Click Yes to keep the new resolution, click No to switch back to the original resolution setting.

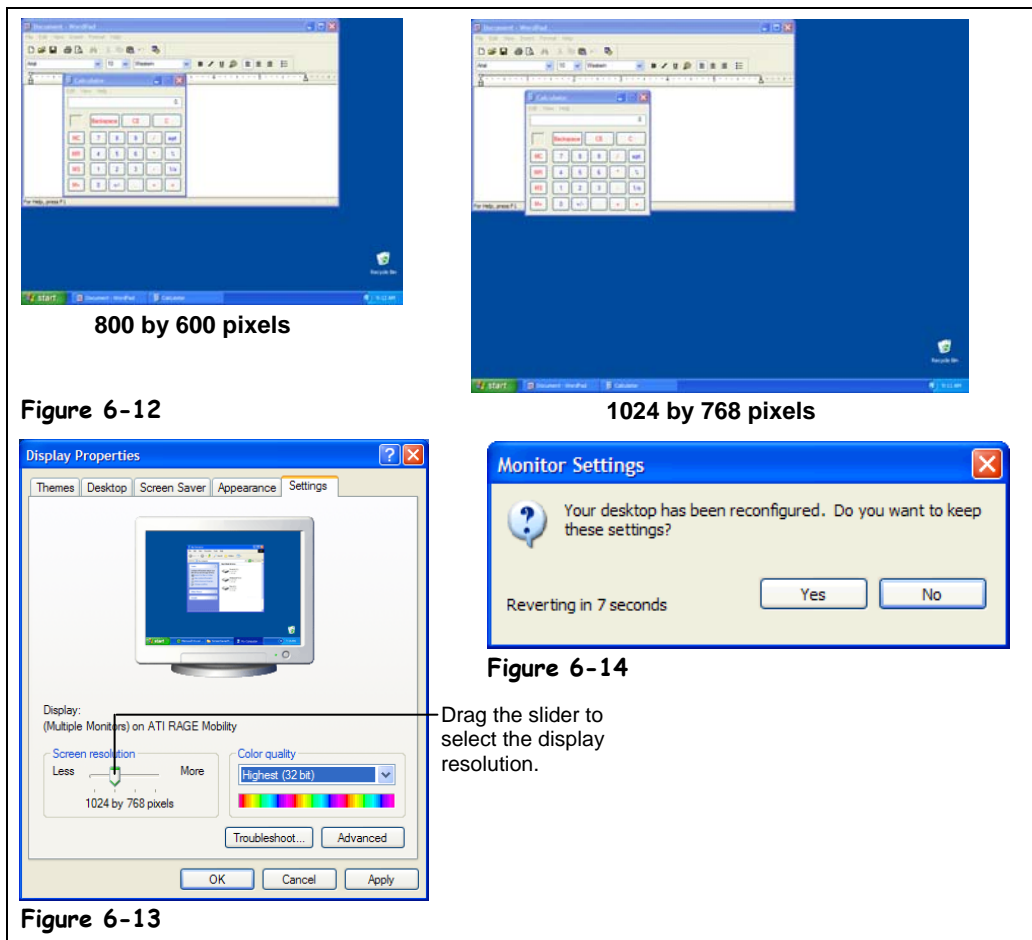


Figure 6-12

1024 by 768 pixels

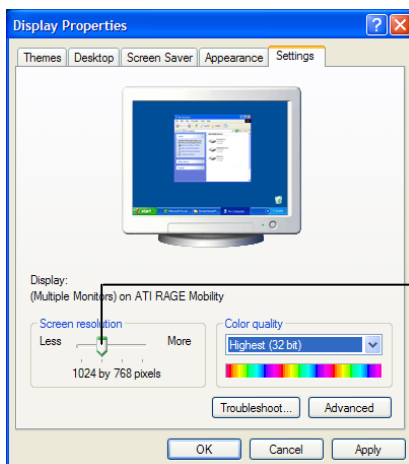


Figure 6-13

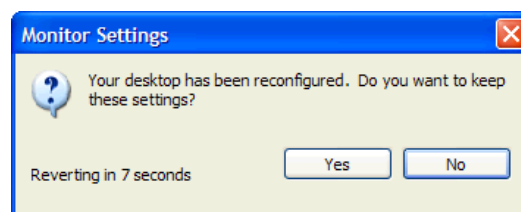


Figure 6-14

Drag the slider to select the display resolution.

Screen Resolution has to do with how much information can fit on the computer screen. Obviously you can't adjust how large or small your computer's monitor is (without buying a new one, that is), but you can make all the images on your screen larger or smaller so you can see more information at once.

1. Right-click a blank area on the desktop and select **Properties** from the shortcut menu.

The Display Properties dialog box appears.

2. Click the **Settings** tab.

The Settings tab appears in front of the Display Properties dialog box, as shown in Figure 6-13. The Screen resolution section is where you can change the resolution setting. Look at the numbers of pixels that are displayed—this is the current display resolution.

3. Slide the **Screen resolution slider** to the right or left to select the resolution you want to use.

The resolutions that are available depend on how much memory is installed on your computer's video card.






4. Click **OK**.

A dialog box, similar to the one shown in Figure 6-14, may appear, giving you 15 seconds to decide if you like the new resolution setting. If you do like it, click the Yes button, if you don't, click the No button. If you don't do anything, Windows assumes you don't like the new resolution setting, or your monitor can't display the new resolution, and switches back to the original resolution.

5. If prompted, click **Yes** to keep the new resolutions settings or **No** to return to the original resolution.

For a more complete description of the various resolution settings you can use, see Table 6-4: *Common Screen Resolutions*. The highest resolution you can display depends on how much memory is installed on your video card. Most video cards have enough memory to display at least 800 by 600 resolution.

Table 6-4: Common Screen Resolutions

Resolution	Description
 640 by 480	No longer supported in Windows XP, 640 by 480 used to be the lowest resolution setting. Larger and newer monitors have made 640 by 480 resolution obsolete.
 800 by 600	This has been the standard resolution setting for most computers, and is the lowest setting on newer monitors. This is a good in-between resolution, allowing you to display quite a bit of information on the screen without having to use a magnifying glass to read it. Use this setting if you have a 15-inch or 17-inch monitor.
 1024 by 768	The current standard, 1024 by 768 puts a lot of information on your screen, but the images can start getting small and difficult to read at this point (unless you have a large monitor). Use this setting if you have a 17-inch or larger monitor, or when you want to see a lot of information at the same time, for example if you're working on a large spreadsheet, graphic files, or multiple windows.
 1280 by 1024	Larger monitors have come down in price in recent years, and as a result, resolution standards have gone up. It's quite common now to find computers that use 1280 by 1024 and higher resolutions.
 Higher resolutions	Depending on how expensive the graphics card in your computer is, there may be several higher modes of resolution which continue to display more and more information and smaller and smaller images.

Higher Resolutions Require More Speed and Video Memory

Quick Reference

To Change the Screen Resolution:

1. Right-click a blank area on the desktop and select **Properties** from the shortcut menu.
2. Click the **Settings** tab.
3. Slide the **Screen resolution slider** to the right or left to select the resolution you want to use.
4. Click **OK**.