

## Lesson 6-4: Changing the Color Scheme and Appearance

**Figure 6-7**

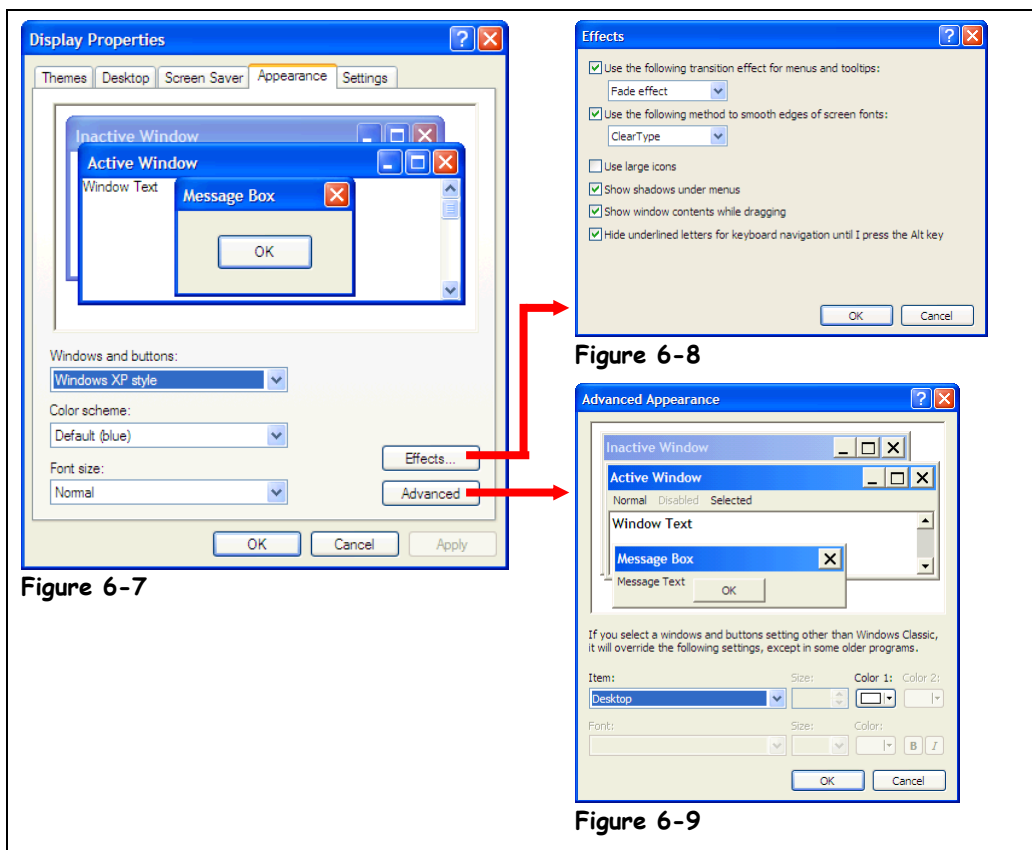
The Appearance tab of the Display Properties dialog box and the default color scheme.

**Figure 6-8**

The Effects dialog box.

**Figure 6-9**

The Advanced Appearance dialog box.



**Figure 6-7**

**Figure 6-8**

**Figure 6-9**

Another way to personalize Windows is to change the screen colors. Windows' screen colors include all the basic parts of a window: the title bar, the menu, scroll bars, etc.

1. **Right-click a blank area on the desktop, and select **Properties** from the shortcut menu.**

The Display Properties dialog box appears.

2. **Click the **Appearance** tab.**

The Appearance tab appears in the Display Properties dialog box, as shown in Figure 6-7. This is where you can use a color scheme to change the appearance of many screen elements.

3. **Click the **Color scheme** list arrow and select **Olive Green** from the list.**

The preview area of the dialog box displays how your screen will look with the selected color scheme.

You can also click the Font list arrow to change the font size. If the default setting is difficult for you to see, you may want to switch to a larger font size.

Can't stand the bright new colors of Windows XP? You can easily restore the tried and true appearance of previous versions of Windows.

**4. Click the **Windows and buttons** list arrow and select **Windows Classic style** from the list.**

The preview area of the dialog box displays how your screen will look in classic style.

**NOTE:** This will only change the way windows and buttons are displayed in Windows; it will not convert everything back to classic style e.g., the Start menu and the desktop.

If you're really computer savvy, you can further customize how Windows looks by using the Advanced and Effects buttons.

**5. Click the **Effects** button.**

The Effects dialog box appears, as shown in Figure 6-8. We won't go through these options in this lesson, but you can find out what some of the more important settings do by looking at Table 6-3: *Controls on the Display Properties Appearance Tab*.

**6. Click **Cancel** to close the Effects dialog box, then click **Cancel** again to close the Display Properties dialog box without saving your changes.**

**Table 6-3: Controls on the Display Properties Appearance Tab**

<b>Control</b>	<b>Description</b>
<b>Windows and buttons</b>	Lets you change Windows' overall visual design. You have two choices: <b>Windows XP Style:</b> The radical new look and feel for Windows XP, with rounded corners, big buttons, and bright crayon-like colors. <b>Windows Classic Style:</b> The look and feel you're probably used to from previous versions of Windows, with square corners and a no-nonsense design.
<b>Color scheme</b>	Lets you select a color scheme that changes the colors of many screen elements simultaneously. <b>NOTE:</b> Unless you have the Windows XP Plus software installed, you will be limited to only a few color schemes.
<b>Font size</b>	Lets you change the size of the fonts, or text, used throughout Windows. This option is useful if you have bad eyesight or a small monitor.
<b>Effects</b>	Click to open the Effects dialog box, shown in Figure 6-8, and select visual effects for Windows' menus, icons, and fonts. <b>Use the following transition effect for menus and tooltips:</b> Specifies whether to activate animations for menu commands and other Windows elements. Animations change how menus, lists, and tooltips open and close. <b>Use the following method to smooth edges of screen fonts:</b> Select <b>Standard</b> for desktop monitors; select <b>ClearType</b> for most laptop computers and other flat screen monitors. <b>Use large icons:</b> Specifies whether to use large icons to represent files, folders, and shortcuts on your desktop. <b>Hide underlined letters for keyboard navigation until I press the ALT key:</b> Specifies whether to suppress the underlined letters of keyboard shortcuts until you actually use the keyboard to navigate in Windows, generally with the ALT key.
<b>Advanced</b>	Click to customize the look of windows, menus, fonts, and icons, as shown in Figure 6-9. This option is only useful if you selected Windows Classic as your theme. Simply select the item you want to change (from the preview display or from the list) and then select a color for the object.

 **Quick Reference**

**To Change Windows' Color Scheme:**

1. Right-click a blank area on the desktop and select **Properties** from the shortcut menu.
2. Click the **Appearance** tab.
3. Select a color scheme from the **Color Scheme** list and click **OK**.

**To Change to Windows Classic Style:**

1. Follow steps one and two above to get to the Appearance tab.
2. Select **Windows Classic style** from the Windows and buttons list.