

Lesson 6-7: Merging Layers

Figure 6-15

The Piccolo site image Layers palette.

Figure 6-16

The Piccolo site image Layers palette with the nested layers displayed.

Figure 6-17

The Piccolo Site image with only the Background layers displayed after merging the layers.

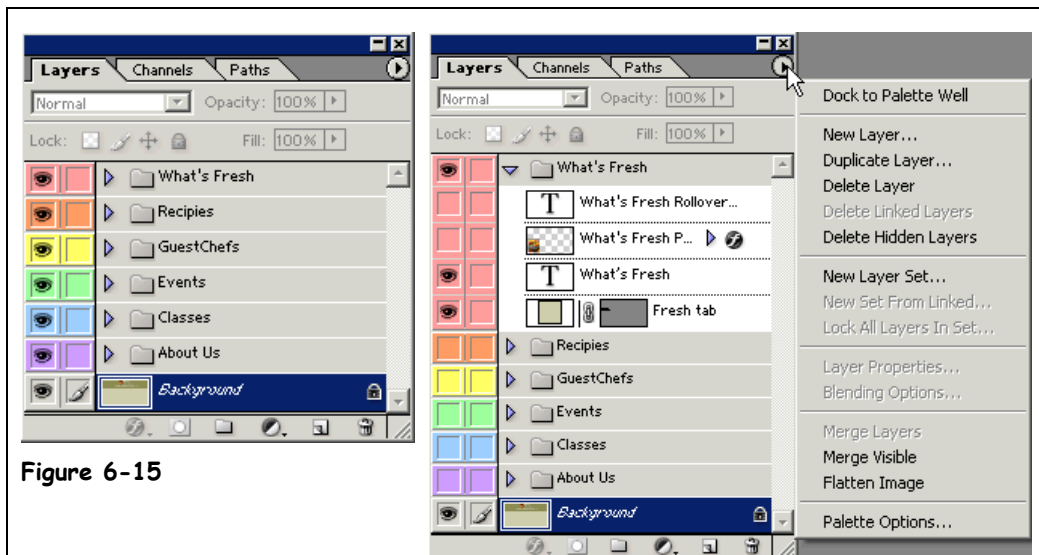


Figure 6-15

Figure 6-16



Figure 6-17

Layers are great because they keep the parts of your image organized. But layers also make your file larger and therefore slower and more difficult to work with. But you can merge layers to increase speed with which your image responds. This lesson will teach you how to merge layers.

1. Open the **Piccolo site** image.

Ask your instructor if you can't find the Piccolo site image.

In order to merge layers, you need to have access to the Layers palette.

2. If necessary, select **Window → **Layers** to open the Layers palette.**

This image has a lot of layers, and some of them are nested within other layers, as indicated by the arrows next to the layer names. These are called Layer Sets. Layer Sets are basically folders that store related layers together, much like a manila folder filing system.

In order to merge layers, only the layers which are going to be merged can be visible.

3. Click on the arrow next to the **What's Fresh layer set.**

The layers within the layer set appear as shown in Figure 6-16. In order to merge the What's Fresh and Fresh Tab layers with the Background layer, you will need to hide the rest of the layers.

4. Click the **Display layer icon to hide all layers except the **What's Fresh, Fresh Tab, and Background layers**.**

Once you have only the layers that you want to merge displayed, the actual process of merging layers is incredibly easy.

5. Click the **Layers palette menu arrow to display the Layers palette menu.**

The Layers palette menu appears as shown in Figure 6-16.

6. Select **Merge Visible from the menu.**

Notice that after selecting this option, the What's Fresh and Fresh Tab layers disappear. They are now part of the Background layer.

7. Click the **Display layer icon to hide all layers except the **Background layer**.**

Your image should look like the one in Figure 6-17.

That's all there is to merging layers. Don't merge layers that contain elements that you're still working on, since doing so could create problems. But after you've perfected a layer, it's a good idea to merge it with other, related layers. Merging layers is a pretty simple process and it makes your image easier to work with.

8. Close the **Piccolo site image without saving your changes.**



Display layer icon

Other Ways to Merge Layers:

- Select **Layer** → **Merge Visible** from the menu.
- Press **<Shift> + <Ctrl> + <E>**.

 **Quick Reference**

To Merge Layers:

1. Open the **Layers palette**.
2. Make sure that only the layers you want to merge are visible.
3. Select **Merge Visible** from the Layers palette menu.

Or...

Select **Layer** → **Merge Visible** from the menu.

Or...

Press **<Shift> + <Ctrl> + <E>**.