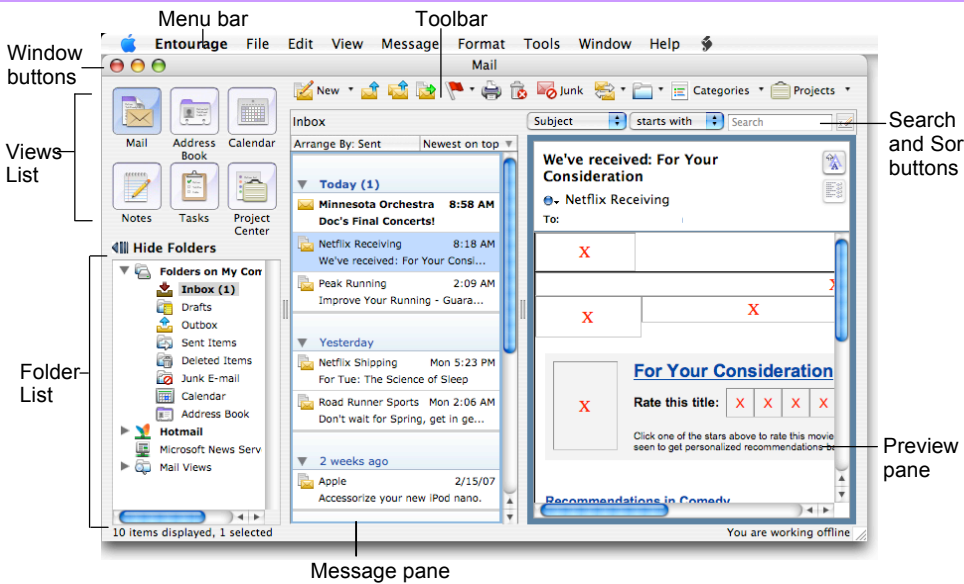








Microsoft®
Entourage 2004
Quick Reference Card

Entourage 2004 Screen






The Entourage Views

-  **Mail:** Contains your unread and recent messages.
-  **Address Book:** Keep track of contact information, such as numbers, and e-mail addresses.
-  **Calendar:** Enables you to view and schedule appointments, events, and meetings.
-  **Notes:** Use like electronic Post-It® Notes to jot down information.
-  **Tasks:** Use to organize to-do lists by priority.
-  **Project Center:** Organize your projects here.

Mail: Basic Tasks

The Mail Toolbar



- **To Open the Inbox:** Click the **Mail button** in the Views area and click the **Inbox folder** in the Folder List.
- **To Check for New Messages:** Click the **Send and Receive button**.
- **Message Indicators:**
 -  Message has not been read
 -  A reply to the message has been sent
 -  A file is attached to the message
- **To Open a Message in a New Window:** Double-click the message you want to read.
- **To Reply to the Message Sender:** Click the message, click the **Reply button**, type your reply, and click the **Send button**.
- **To Reply to All Message Recipients:** Click the message, click the **Reply to All button**, type your reply, and click the **Send button**.
- **To Forward a Message:** Click the message, click the **Forward button**, enter the e-mail address(es) in the **To: box**, enter any additional comments in the message area, and click the **Send button**.
- **To Link a Message to Another Item:** Click the **Link button** on the toolbar.
- **To Create a Message:**
 1. Click the **New button** or press **<⌘> + <N>**.
 2. Enter the e-mail address(es) in the **To: box**, or click the **Address Book button** to use the address book.
 3. Click the **Cc: box** and enter the e-mail address(es) for whom you want to send a carbon copy of the message.
 4. Click the **Bcc: box** and enter the e-mail address(es) for whom you want to send a blind carbon copy of the message. Blind carbon copy means the addressees will not see that the message was sent to other Bcc: recipients.
 5. Enter the subject of the message in the **Subject box**.
 6. Enter the text of your message in the text box.
 7. Click the **Send button**.
- **To Attach a File:** Create a new message, click the **Add Attachment button** on the toolbar, select the file you want to send, click **OK**.
- **To Delete a Message:** Select the message and press the **<Delete>** key or click the **Delete button**.
- **To Open an Attachment:** Double-click the attachment at the top of the message screen.

Keystroke Shortcuts

Save	<⌘> + <S>
Print	<⌘> + <P>
Undo	<⌘> + <Z>
Cut	<⌘> + <X>
Copy	<⌘> + <C>
Paste	<⌘> + <V>
Duplicate the Item	<⌘> + <D>
Minimize the Active Window	<⌘> + <M>
Refresh Message List	<⌘> + <L>
Mark as Read	<⌘> + <T>
Send Outbox Mail/Receive new issues	<⌘> + <K>
Save	<⌘> + <S>
Switch Between Applications	<⌘> + <Tab>
New Entourage Item	<⌘> + <N>
Add an Attachment	<⌘> + <E>
Open the Project Gallery	<Shift> + <⌘> + <P>
Message List	<⌘> + <1>
Address Book	<⌘> + <2>
Calendar	<⌘> + <3>
Notes List	<⌘> + <4>
Tasks List	<⌘> + <5>
Custom Views	<⌘> + <6>
Hide Entourage	<⌘> + <H>
Quit Entourage	<⌘> + <Q>

Mail: Message Tasks

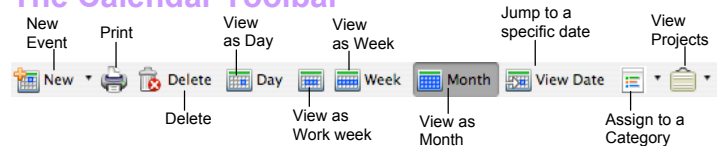
- **To Flag a Message for Follow-Up:** Right-click the message and select **Flag** from the contextual menu, or press **<F> + <I>**, or click the **Flag for Follow Up button** on the toolbar.
- **To Clear a Flagged Message:** Right-click the message and select **Clear Flag** from the contextual menu.
- **To Redirect a Message:** Open or select the message you want to redirect and select **Message** → **Redirect** from the menu. Enter the addresses of the recipients in the To: box.
- **To Resend a Message:** Open the message you want to resend. Click the **Resend button** on the toolbar.
- **To Save a Message as a Draft:** Select **File** → **Save** from the menu. The message is saved in the Drafts folder until you send it.
- **To Create a Mailing Group:** In the Address Book, click the **New Group button**, or select **File** → **New** → **Group** from the menu. In the New Group dialog box, click the **Add button** and enter an e-mail address. Repeat for each recipient.
- **To Delete a Mailing Group:** In the Address Book, select the group and click the **Delete button** from the menu. Or, select the group from the Address list and press the **<Delete>** key.
- **To Create a Signature:** Select **Tools** → **Signatures** from the menu, click the **New New Signature button** and create the signature.
- **To Change a Message's Options:** Click the **Options button** on the toolbar. Message options allow you to specify:
 - + The level of importance of the message
 - + The character type
 - + Where you want the message to go after it is sent
 - + If you want to compose the message in HTML
- **To Create Rules:**
 1. Make sure that you're in the **Inbox**.
 2. Select **Tools** → **Rules** from the menu and click the **New button**.
 3. Add the rule's criteria in the **If** area of the dialog box.
 4. Add the rule's actions in the **Then** area of the dialog box.
 5. Check the **Enabled** check box to activate the rule.
 6. Click **OK**.

General Entourage Functions

- **To Display/Hide the Views List:** Select **View** → **Views List** from the menu to toggle the display.
- **To Display/Hide the Preview Pane:** Select **View** → **Preview Pane** from the menu to toggle the display.
- **To Change the Current View:** Select **View** → **Go To** from the menu and select the desired view.
- **To Sort Items in a View:** Open the view, use the drop-down lists underneath the toolbar to sort and filter the items in the view.
- **To Move an Item to a Different Folder:** Select **View** → **Folder List** from the menu to display the folder list then click and drag the item to the destination folder.

Calendar

The Calendar Toolbar



- **To View the Calendar:** Click the **Calendar** icon on the Outlook bar or press **<F> + <3>**.
- **To Change Views:** Select **View** → **Go To** from the menu and select the desired view. Or... Click one of the Calendar View buttons on the toolbar.
- **To Schedule an Event:** Click the **New Event button** or press **<F> + <N>**.
- **To Schedule a Recurring Event:** In the Event dialog box, click the **Occurs list arrow** and select how often you want the event to recur.
- **To Invite Others to an Event:** Click the **Invite Invite button** and add e-mail addresses in the To: box. When you have the event information complete, click the **Send button**. If you don't want event recipients to respond, select the **Event** menu and make sure Request Responses is not checked.
- **To Schedule an All Day Event:** Check the **All Day Event** check box in the Event dialog box.
- **To Reschedule an Event:** Double-click the meeting, appointment, or event, make your changes and click the **Save button**.

Tasks

- **To View Your Task List:** Click the **Tasks button** in the Views area, or press **<F> + <5>**.
- **To Create a New Task:** Click the **New New button**, or press **<F> + <N>**, or simply type the task in the **Task: box**.
- **To Complete a Task:** In the Task list, check the task's **check box**, or in an open task dialog box check the **Complete** check box.
- **To Delete a Task:** Select the task and press the **<Delete>** key or click the **Delete button**.
- **To Create a Recurring Task:** In an open task, click the **Occurs** list arrow and select when the task should recur.
- **To Change Task Priority:** In the Task dialog box, click the **Priority list arrow** and select the task's level of priority.

Address Book

- **To View the address Book:** Click the **Address Book** icon in the Views area, or press **<F> + <2>**.
- **To Create a New Contact:** Click the **New New button** or press **<F> + <N>**.
- **To Open and Edit a Contact:** Double-click the contact or select the contact and click the **Open Contact button**. Edit contact information in the dialog box.
- **To Find a Contact:** Click the **Find button** on the toolbar, specify who or what you're looking for and click **Find**.
- **To Delete a Contact:** Select the contact and press the **<Delete>** key or click the **Delete button**.
- **To Send a Message to a Contact:** Select a contact and click the **New Message To button** and edit contact information in the dialog box, or select **Contact** → **New Message To** from the menu.
- **To Change Views:** Select **View** → **Go To** and select the desired view.
- **To Find a Contact:** Enter the name in the **Search** text box on the toolbar and press **Return**.

Custom@Guide

Get More Free Quick References!

Visit ref.customguide.com to download.



Office 365

- [Access](#)
- [Excel](#)
- [Office 365](#)
- [OneNote](#)
- [Outlook](#)
- [PowerPoint](#)
- [Teams](#)
- [Word](#)

G Suite

- [Classroom](#)
- [G Suite](#)
- [Gmail](#)
- [Google Calendar](#)
- [Google Docs](#)
- [Google Drive](#)
- [Google Sheets](#)
- [Google Slides](#)

OS

- [Mac OS](#)
- [Windows 10](#)

Productivity

- [Digital Literacy](#)
- [Salesforce](#)

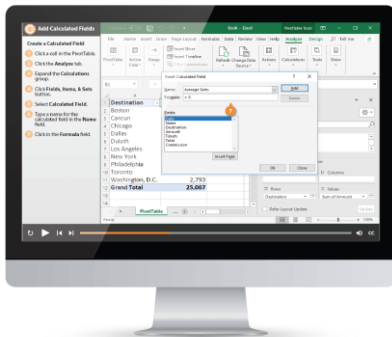
Soft Skills

- [Business Writing](#)
- [Email Etiquette](#)
- [Manage Meetings](#)
- [Presentations](#)
- [Security Basics](#)
- [SMART Goals](#)

+ more, including [Spanish versions](#)

Loved by Learners, Trusted by Trainers

Please consider our other training products!



Interactive eLearning

Get hands-on training with bite-sized tutorials that recreate the experience of using actual software. SCORM-compatible lessons.



Customizable Courseware

Why write training materials when we've done it for you? Training manuals with unlimited printing rights!

Over 3,000 Organizations Rely on CustomGuide



“The toughest part [in training] is creating the material, which CustomGuide has done for us. Employees have found the courses easy to follow and, most importantly, they were able to use what they learned immediately.”

Contact Us!

sales@customguide.com

612.871.5004