

# Macromedia® Dreamweaver 4

## Quick Reference Card

### Dreamweaver 4 Workspace



### Keyboard Shortcuts

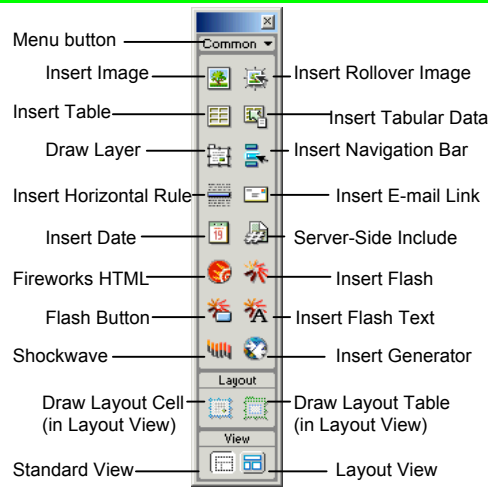
#### General

Insert Named Anchor	<Ctrl> + <Alt> + <A>
Add to Library	<Ctrl> + <Shift> + <B>
Duplicate	<Ctrl> + <D>
Edit Style Sheet	<Ctrl> + <Shift> + <E>
Replace	<Ctrl> + <H>
Show/Hide Grids	<Ctrl> + <G>
Show Invisibles	<Ctrl> + <Shift> + <I>
Insert Image	<Ctrl> + <Alt> + <I>
Page Properties	<Ctrl> + <J>
Create Link	<Ctrl> + <L>
Remove Link	<Ctrl> + <Shift> + <L>
Insert Table Row	<Ctrl> + <M>
Delete Table Row	<Ctrl> + <Alt> + <M>
Quick Tag Editor	<Ctrl> + <T>
View Head Content	<Ctrl> + <Shift> + <W>
Show/Hide Link	<Ctrl> + <Shift> + <Y>

### Toolbar Buttons

- Code View:** View or edit the page in its source HTML code.
- Split View:** View the page in HTML code and Design view (WYSIWYG) at the same time.
- Design View:** View or edit the page in the WYSIWYG (What You See Is What You Get) editor.
- Title:** Type the Web page title without using the Page Properties dialog box. The title appears in the title bar of the browser.
- File Management:** Have easy access to files already published, or upload files directly from the document window.
- Preview:** Choose from a list of browsers installed on the computer to preview the page.
- Refresh:** Click to update changes made to the page while working on the HTML code.
- Reference:** Click to view the definition of the current tag in the Reference panel.
- Code Navigation:** Click to view the definition of the current tag in the Reference panel.
- View Options:** In Design view, turn visual aids off or on such as table borders, or apply a grid or ruler to the page. In Code view or the Code Inspector, change how the HTML code is displayed.

### Object Panel



- Click the **Menu button** to toggle between the Object Panel's seven menus:
  - Characters:** insert special text symbols and line commands (ex. Copyright, Euro, line break)
  - Common:** includes objects commonly inserted in a Web page (ex. tables, images, layers)
  - Forms:** insert elements often found in a Web form (ex. text fields, option buttons, check boxes)
  - Frames:** insert layouts often used for pages that use frames
  - Head:** insert tags in the head section of the Web page (ex. meta, keywords, page description)
  - Invisible:** named anchors, comments, and scripts
  - Special:** Applets, Plug-ins, and ActiveX controls

#### Function Key Shortcuts

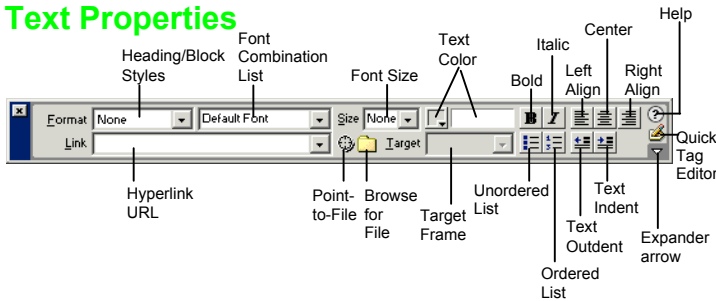
Reference	<Shift> + <F1>
Reference Panel	<Ctrl> + <Shift> + <F1>
Layers	<F2>
Frames	<Ctrl> + <F2>
Object Panel	<Ctrl> + <F2>
Behaviors Panel	<Shift> + <F3>
Property Inspector	<Ctrl> + <F3>
Hide/Show All Floating Windows	<F4>
Site Files	<F5>
Refresh Local	<Shift> + <F5>
Switch to Layout View	<Ctrl> + <F6>
Switch to Standard View	<Ctrl> + <Shift> + <F6>
Code Inspector	<F10>
History Panel	<Shift> + <F10>
Assets Panel	<F11>
CSS Panel	<F11> + <Shift>
Preview in Primary Browser	<F12>
Preview in Secondary Browser	<Ctrl> + <F12>

# Property Inspector

## General Commands

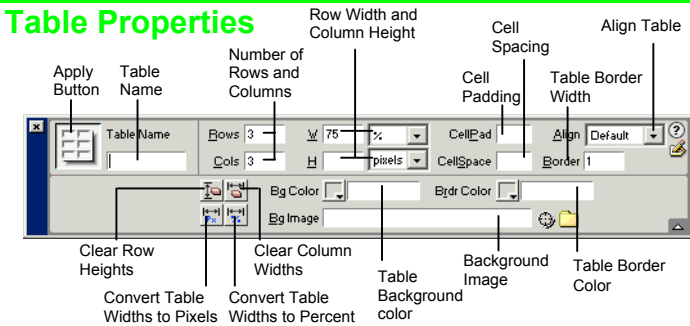
- Select an item to view its properties.
- **To Get Help:** Click the **Help button** for more information on options.
- **Format Text in HTML Code:** Click the **Quick Tag Editor button** to apply an HTML tag to selected text or object.
- **To Expand/Contract the Property Inspector:** Click the **Expander arrow** in the lower right corner to view or hide all the options in the Property Inspector.

## Text Properties



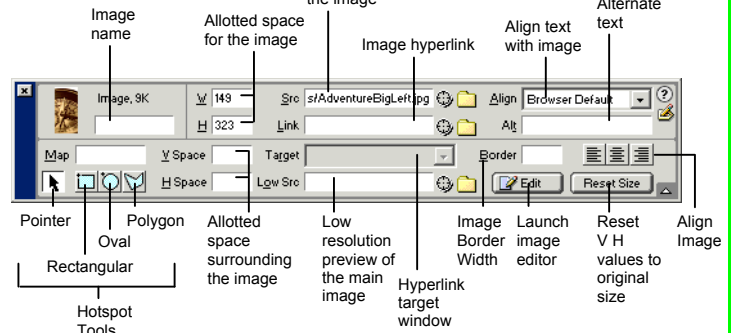
- **To Format Text:** Select the text and apply formatting from the Property Inspector.
- **To Create a Hyperlink:** Select the text and type the URL in the Link textbox; or drag the **Point-to-File icon** to the file in the Site window; or click the **Folder icon** to browse for a file in the Web site.
- **Specify Link Target Frame:** Specify in which frame the hyperlink should appear.

## Table Properties



- **To View Table Formatting:** Click the **Apply button** in the Inspector.
- **To Add or Delete Rows or Columns:** Type the number of rows or columns you want to add or delete in the **Rows** and **Cols** text boxes.
- **To Change Table Width or Height:** Type a number in the **W** or **H** text boxes.
- **To Display the Table in Pixels or Percent:** Click the **pixels or percent list arrow** for the Rows or Columns and select the display option.
- **To Add Cell Padding or Cell Spacing:** Enter the amount in the **CellPad** or **CellSpace** text boxes.
- **To Add a Table Border:** Enter the amount in the **Border** text box.
- **To Add a Background Color:** Click the **Bg Color list arrow** and select a color from the palette.
- **To Add a Border Color:** Click the **Brdr Color list arrow** and select a color from the palette.
- **To Add a Background Image:** Type the location in the **Bg** text box, or drag the **Point-to-File icon** to the file in the Site window; or click the **Folder icon** to browse for a file.
- **To Add a Table Border:** Enter the width in the **Border** text box.

# Image Properties



- **To Add a Hyperlink to an Image:** Select the text and type the URL in the Link textbox; or drag the **Point-to-File icon** to the file in the Site window; or click the **Folder icon** to browse for a file in the Web site.
- **To Create an Image Map:** Select the **Rectangular**, **Oval**, or **Polygon Hotspot Tool**, draw a shape and set the link location.
- **To Insert Alternate Text:** Type text that will appear instead of the picture in the **Alt** text box.
- **To Edit an Image:** Click the **Edit button** to launch the default graphic editor program on your computer.
- **To Align an Image:** Click the **Align list arrow** and align the image relative to text nearby; or click the **Left**, **Center** or **Right Align button** in the Inspector.
- **To Insert an Image:** Press **<Ctrl> + <Alt> + <I>**, or select **Insert** → **Image** from the menu.

# Panels

- **To View or Hide a Panel:** Select **Window** from the menu bar and select the panel you want to view or hide.

• There are 12 different panels available in Dreamweaver:

**Assets:** View and insert site assets such as images, **<F11>** HTML colors, links, Flash movies, scripts, templates, and library items

**Behavior:** Attach and modify behaviors to specific page elements, specifically HTML tags **<Shift>+<F3>**

**Code Inspector:** Work on the page in HTML code; just like Code view but in a separate window **<F10>**

**CSS Styles:** Apply CSS styles to the current selection **<Shift> + <F11>**

**Frames:** View a representation of the frames that make up the page **<Shift> + <F2>**

**History:** Replay or Undo one or more steps already performed in Dreamweaver **<Shift> + <F10>**

**HTML Styles:** Apply HTML styles based on other HTML tags to the selection **<Ctrl> + <F11>**

**Layers:** Manage the layers in the page **<F2>**

**Library:** Manage the operations of a library item inserted on the page through this panel **(none)**

**Reference:** View detailed information about the HTML tag you are working on **<Ctrl> + <Shift> + <F1>**

**Templates:** Manage the operations of a template item through this panel **(none)**

**Timeline:** View the properties of layers and images over time **<Shift> + <F9>**

# Custom@Guide

## Get More Free Quick References!

Visit [ref.customguide.com](http://ref.customguide.com) to download.



### Office 365

- [Access](#)
- [Excel](#)
- [Office 365](#)
- [OneNote](#)
- [Outlook](#)
- [PowerPoint](#)
- [Teams](#)
- [Word](#)

### G Suite

- [Classroom](#)
- [G Suite](#)
- [Gmail](#)
- [Google Calendar](#)
- [Google Docs](#)
- [Google Drive](#)
- [Google Sheets](#)
- [Google Slides](#)

### OS

- [Mac OS](#)
- [Windows 10](#)

### Productivity

- [Digital Literacy](#)
- [Salesforce](#)

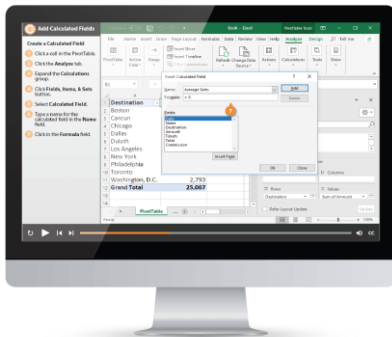
### Soft Skills

- [Business Writing](#)
- [Email Etiquette](#)
- [Manage Meetings](#)
- [Presentations](#)
- [Security Basics](#)
- [SMART Goals](#)

+ more, including [Spanish versions](#)

## Loved by Learners, Trusted by Trainers

Please consider our other training products!



### Interactive eLearning

Get hands-on training with bite-sized tutorials that recreate the experience of using actual software. SCORM-compatible lessons.



### Customizable Courseware

Why write training materials when we've done it for you? Training manuals with unlimited printing rights!

## Over 3,000 Organizations Rely on CustomGuide



“The toughest part [in training] is creating the material, which CustomGuide has done for us. Employees have found the courses easy to follow and, most importantly, they were able to use what they learned immediately.”

Contact Us!

[sales@customguide.com](mailto:sales@customguide.com)

612.871.5004