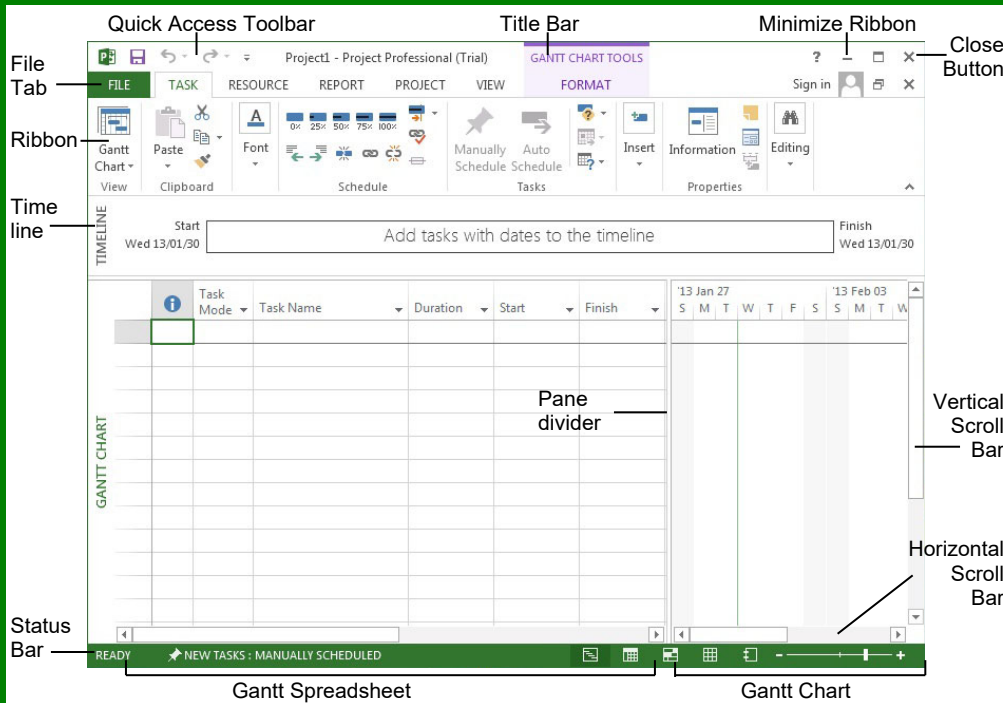


### Project 2013 Screen



### Common Views

**To Display a View:** Select the **View** tab and choose from the Task Views available.

**Gantt Chart:** Default view. Displays a list of tasks with bar chart information.

**Task Usage:** Displays a list of tasks showing assigned resources under each task.

**Network Diagram:** Displays a sequence or logic diagram that shows the project's tasks and dependencies.

**Calendar:** Displays tasks and durations in a monthly calendar.

**Other Views:** Provides additional views:

- **Task Form:** Detailed information of the select task.
- **Task Sheet:** List of all the tasks and selected details.
- **Timeline:** An expanded view of the timeline.

### Keystroke Shortcuts

Save Project File	Ctrl + S
Close Current Project	Ctrl + W
Open Existing Project	Ctrl + O
Print/Print Preview	Ctrl + P
Task or Resource Information	Shift + F2
Assign Resources	Alt + F10
Copy	Ctrl + C
Cut	Ctrl + X
Paste	Ctrl + V
Help	F1
Go To Selected Task	Ctrl + Shift + F5
Link Selected Task	Ctrl + F2
Unlink Selected Task	Ctrl + Shift + F2
Create a Hyperlink	Ctrl + K
Zoom In	Ctrl + /
Zoom Out	Ctrl + Shift + *
Undo	Ctrl + Z
Redo	Ctrl + Y
Bold	Ctrl + B
Italics	Ctrl + I
Underline	Ctrl + U

### Project 2013 Fundamentals

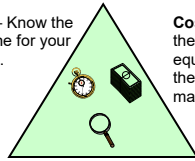
- **To Create a New Project:** Click the **File** tab, click the **New** tab and click the **Blank Project** option. Or press **Ctrl + N**.
- **To Use a Template:** Click the **File** tab, click the **New** tab. Select a template from the menu and click **OK**.
- **To View Information About the Project:** Select the **Project** tab and click **Project Information** in the Properties group.
- **To Set the Working Time Calendar:** Select the **Project** tab and click **Change Working Time** in the Properties group. Select the date(s) you want to change and select a new calendar, or enter the new working hours in the **Start** and **Finish** boxes.
- **To Use Spell check:** Select the **Project** tab and click **Spelling** in the Proofing group.
- **To Use Undo and Redo:** Click the **Undo** button and **Redo** button on the Quick Access toolbar.
- **To Adjust the Timescale:** Select the **View** tab and choose from the options in the **Timescale** list arrow in the Zoom group.
- **To Adjust the Zoom Level:** Select the **View** tab and click the **Zoom** button to either zoom in or zoom out. Alternatively, click the **Entire Project** button to zoom to a level where the whole project is visible.
- **To Save a Project File:** Click the **Save** button on the Quick Access toolbar or click **File** tab and select **Save** or **Save As** if you wish to change the file name or location.
- **To Set a Baseline Plan:** Click the **Project** tab, click the **Set Baseline** drop list arrow in the Schedule group and choose **Set Baseline**. Click the **Set Baseline Plan** option, choose the baseline number, save the plan for the entire project or selected tasks, and click **OK**.
- **To Set an Interim Plan:** Click the **Project** tab, click the **Set Baseline** drop list arrow in the Schedule group and choose **Set Baseline**. Select the baseline details and click **OK**. Click the **Set Interim plan** option, choose where to copy from and where they should be copied into, save the plan for the entire project or selected tasks, and click **OK**.
- **To Show or Hide the Planning Wizard:** Click the **File** tab and click **Options**. Click the **Advanced** tab and either select or deselect the **Advice from Planning Wizard** checkbox.
- **To View a Task's Usage:** Select the task and click the **View** tab. Click the **Task Usage** button in the Task Views group.
- **To Get Help:** Press **F1** to open the Project Help task pane, type your question, and click the **Search** button.

## Plan and Manage the Project

- There are six basic steps to follow when planning a project: (1) Define a project (2) Plan project activities (3) Plan for and gather resources (4) Plan project costs (5) Plan for quality and risks (6) Plan security and communication.
- Project management is the process of planning, organizing, and managing tasks and resources to accomplish an objective within constraints of time, resources, or cost.
- Adjusting one constraint of the Project Triangle affects the other two.

### Project Triangle

**Time** – Know the deadline for your project.

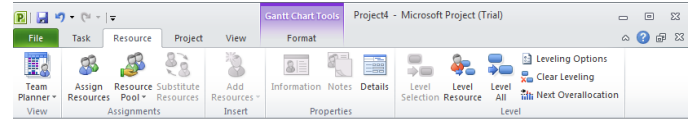


**Cost** – This includes the people and the equipment that do the work, and the materials they use.

**Scope** – This includes the quality, functions, and features of your product or service, and the work required to deliver it.

## Working with Resources and Costs

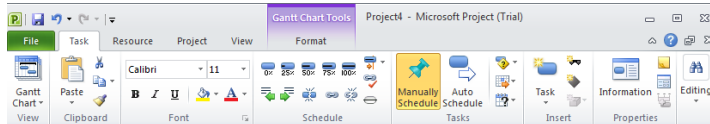
### The Resource Tab



- **To Enter Resource Availability:** Click the **Information** button in the Properties group. Enter the Available To and Available From dates in the Resource Availability table, and enter the Maximum Units available in the Units field.
- **To Assign a Resource:** Select a task and click the **Assign Resources** button, select the resource(s) and click **Assign**.
- **To Enter Costs:** Click the **Information** button in the Properties group and click the **Costs** tab. Enter amounts in the **Standard Rate** field, the **Overtime Rate** field, or the **Per Use Cost** fields. Then choose when you'd like to begin accruing the resource cost in the **Cost Accrual** field.

## Working with Tasks

### The Task Tab



- **To Enter a Task:** Type the task's name in the Task Name column and press **Enter**.
- **To Enter a Duration:** Type the duration (m = minutes; h = hours; d = days; w = weeks; mo = months) in the Duration column and press **Enter**.
- **To Create a Milestone:** Enter 0 (zero) in the Duration column. Or, click the **Information** button in the Properties group, select the **ADVANCED** tab and click the **Mark task as Milestone** check box.
- **To Create a Recurring Task:** Click the **Task** list arrow in the Insert group and select **Recurring Task** from the list. Enter information into the Recurring Task Information dialog box.
- **To Access Task Information:** Select the task and click the **Information** button in the Properties group. Or, press **Ctrl + F2**
- **To Organize the Task List:** Create summary tasks and subtasks by selecting the task(s) and clicking the **Outdent Task** or **Indent Task** buttons in the Schedule group.
- **To Link Tasks:** Press **Ctrl** and select the two tasks you want to link in the order that you want to link them and click the **Link Tasks** button in the Schedule group.
- **To Unlink Tasks:** Press **Ctrl** and select two linked tasks in the order they are linked. Click the **Unlink Tasks** button in the Schedule group.
- **To Split a Task:** Select the task, click the **Split Tasks** button in the Schedule group, and use the dividing tool to split the task's Gantt bar.
- **To Enter Lag or Lead Time:** Click the successor task and click the **Information** button in the Properties group. Click the **Predecessors** tab and enter a lead time with a (-) minus sign, or lag time with a (+) plus sign in the **Lag** box.
- **To Enter a Task Deadline or Constraint:** Click the task to which you want to add a deadline and click the **Information** button in the Properties group. Click the **Advanced** tab, and select a date in the Deadline box, or select the relevant constraint and enter the Constraint date.
- **To Assign a Task Calendar:** Select the task, click the **Information** button in the Properties tab and click the **Advanced** tab. Click the **Calendar** list arrow and select a calendar from the drop-down list.
- **To Apply a Filter:** Click the **Filter** list arrow for the relevant column and select the filter you want to apply to the project.

## Viewing the Project

- **Applying a Split View:** Select one of the options from the **Timeline** or **Details** list arrows in the Split View group on the VIEW tab.
- **Applying Groups:** Select one of the options from the **Group By** list arrow in the Data group on the VIEW tab.
- **Applying Filters:** Select one of the options from the **Filter** list arrow in the Data group on the VIEW tab.
- **Sort the Information:** Select one of the options from the **Sort** list arrow in the Data group on the VIEW tab.
- **View the Critical Path:** In the Gantt Chart View, select **Critical** from the options in the **Highlight** list arrow in the Data group on the VIEW tab.

## Tracking Progress

Always save a baseline plan before beginning to track progress.

- **Update Tasks:** Select the task you want to update and select the percentage complete in the Schedule group on the TASK tab.
- **Update Resources:** In Resource Usage or Task Usage view, select the resource you wish to update, click the **Details** button in the Properties group on the RESOURCE tab and update the Work value.
- **Update Costs:** Turn off automatic cost updating: click the **File** tab and select **Options**. Click the **Schedule** tab and select the **Off** option for Calculate project after each edit at the bottom of the menu.
- **Check Project Variance:** In a task or resource view, click the **VIEW** tab and click the **Tables** list arrow. Click **More Tables** and select **Variance** from the options.

## Balancing the Project

- **To Identify an Overallocated Resource:** In the Resource Usage View, select **Overallocated Resources** from the options in the **Highlight** list arrow on the VIEW tab.
- **To Balance Overallocated Resources Automatically:** Click the **Leveling Options** button in the Level group on the RESOURCE Tab. Select **Automatic** under Leveling Calculations.
- **To Reassign Work:** Open **Gantt Chart** view, select the overallocated resource and click the **Assign Resources** button in the Assignments group on the RESOURCE tab. Select the overallocated resource, click the **Remove** button, select another resource and click **Assign**.

## Interactive Training for Over 2,000 Topics:

### Office 2016 for Windows

Excel 2016  
Outlook 2016  
PowerPoint 2016  
Word 2016

### Office 2016 for Mac

Excel 2016  
Outlook 2016  
PowerPoint 2016  
Word 2016

### Office 365

OneDrive for Business  
Skype for Business

### Office 2013

Excel 2013  
OneNote 2013  
Outlook 2013  
PowerPoint 2013  
SharePoint 2013  
Word 2013

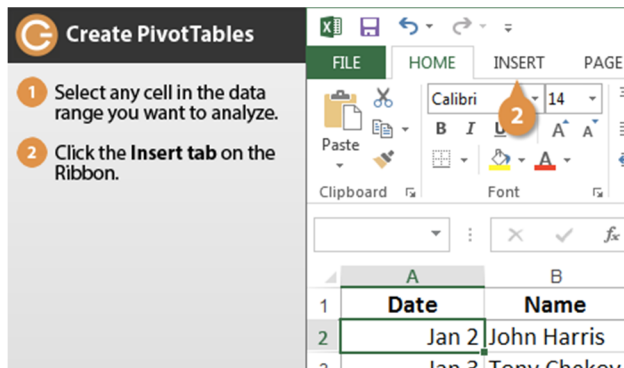
### Operating Systems

Windows 10  
Windows 8  
Windows 7  
Computer Basics  
Mac OS

### Also Available

Soft Skills Courses  
Spanish Editions

## Each Course Includes:



### Interactive Tutorials

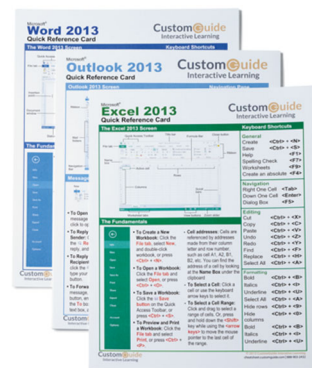
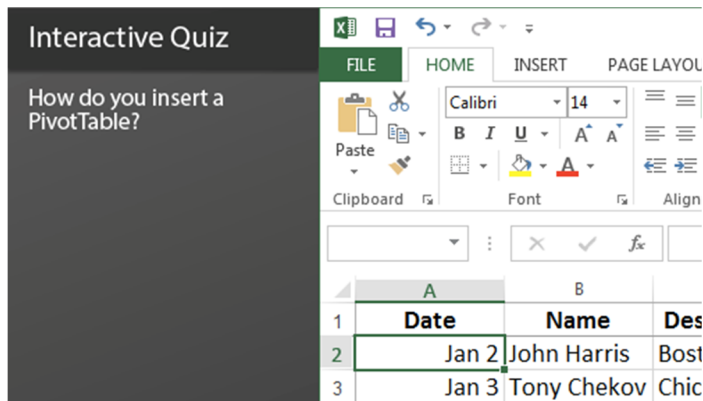
Get hands-on training with bite-sized tutorials that recreate the experience of using actual software. SCORM-compatible for your LMS!

[View Sample](#)

### Customizable Courseware

Why write training materials when we've done it for you? Training manuals, practice files, and instructor guides with unlimited printing rights!

[View Sample](#)



### Interactive Assessments

How much do your users really know? Accurately measure skills with realistic software simulations. SCORM-compatible for your LMS!

[View Sample](#)

### Quick References

Handy "cheat sheets" with shortcuts, tips, and tricks. Free for personal use!

[View Samples](#)

## Over 3,000 Companies Rely on CustomGuide

