

Working with Databases and Objects

Getting Started Window

- **To Create a Database:** Click a template category in the list and click the template you want to use. Click **Create**. Or, click the **Blank Database** button.
- **To Open an Existing Database:** Click a database in the Open Recent Database list or click **More** and browse for it.

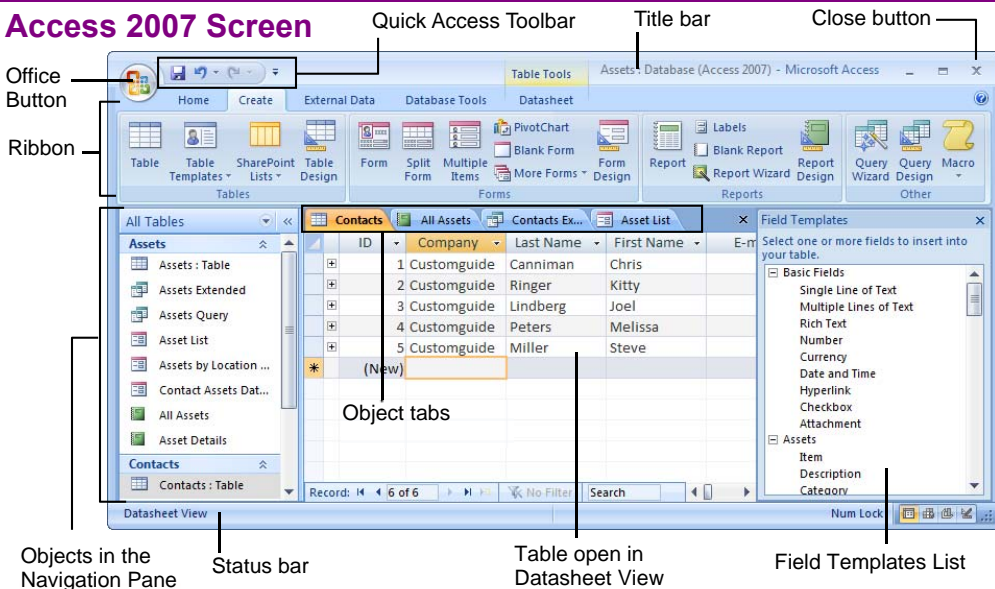


Keyboard Shortcuts

General

Open a Database	Ctrl + O
Close a Database	Ctrl + W
Print Current View	Ctrl + P
Delete	Delete
Undo	Ctrl + Z
Help	F1
Delete Record	Ctrl + -
Cancel Changes	Esc
Insert Date	Ctrl + ;
Insert Time	Shift + Ctrl + :
Insert Value from Same Field in Previous Record	Ctrl + ' (Apostrophe)
Check Spelling	F7
Switch Applications	Alt + Tab

Access 2007 Screen



Navigation

Next Field	Tab
Previous Field	Shift + Tab
Next Screen	Page Down
Previous Screen	Page Up
First Record	Ctrl + ↑
Last Record	Ctrl + ↓
Toggle Navigation Pane	F11

Database Objects

Tables store related data in rows (records) and columns (fields).

Queries view, filter, calculate, change, sort, and examine the data stored in tables.

Forms are custom screens that provide an easy way to enter and view data in a table.

Reports present data from a table or query in a printed format.

Macros automate common tasks and can be run by clicking a button or pressing a shortcut key.

Modules are groups of procedures written in Visual Basic and used to automate tasks.

Page objects have been replaced by Windows SharePoint Services. Pages in old databases can still be viewed—but not edited—in Internet Explorer.

- **To Open an Object:** Double-click the object in the Navigation Pane.
- **To Create a New Object:** Click the **Create** tab on the Ribbon and click a button for the object or wizard you want to use on the Objects bar.

- **To Modify an Object:** Open the object or click its tab in the window, click the **Format** tab on the Ribbon, click the **View** button in the Views group and select **Design View** or **Layout View**.
- **To Delete an Object:** Select the object and press **Delete**. Click **Yes**.
- **To Rename an Object:** Right-click the object, select **Rename** from the contextual menu, enter the new name, and press **Enter**.
- **To Repair/Compress a Database:** Click the **Office Button** and select **Manage** → **Compact and Repair Database**.
- **To Import Data:** Click the **External Data** tab on the Ribbon and click the type of file you want to import from in the Import group. Follow the onscreen instructions.
- **To Export Data:** Click the **External Data** tab on the Ribbon and click the type of file you want to export to in the Export group. Follow the onscreen instructions.

Editing

Cut	Ctrl + X
Copy	Ctrl + C
Paste	Ctrl + V
Find	Ctrl + F
Replace	Ctrl + H
Select All	Ctrl + A

Design View

Properties	Alt + Enter
Open object in Design View	Ctrl + Enter
Save Object	Ctrl + S

Working with Tables

Creating Table Relationships

Linking Tables tells Access how two tables are related to each other. The fields that you use to link two tables must contain the same concept in two different tables. A *primary key* field from one table is often used when linking two tables.

1. Click the **Datasheet** tab on the Ribbon and click the **Relationships** button in the Relationships group.
2. If necessary, click the **Show Table** button in the Relationships group on the Design tab. In the Show Table window, select a table you want to link, click the **Add** button, and repeat for each table. Click **Close**.
3. Drag a field from one table and drop it on the related field in the second table. (Optional) Check the **Enforce Referential Integrity** box. Click **Create**.

Working with Table Data

- Database information can be directly added and modified from tables and some queries and forms.
- **To Add a Field to a Table:** Enter data in the cell below the Add New Field column header. Or, click and drag a field from the Field Templates pane to the table (to display the Field Templates pane, click the **Datasheet** tab on the Ribbon and click the **New Field** button in the Fields & Columns group).
- **To Add a New Record:** Enter data in the bottom row of the table.

Record selector

+	4	Customguide	Peters	Melissa
+	5	Customguide	Miller	Steve
*	(New)			

Start adding a new record here.

- **To Select a Record:** Click the **Record selector** to the left of the record.
- **To Delete a Record:** Select the record, click the **Home** tab on the Ribbon and click the **Delete** button in the Records group. Click **Yes**.
- **To Spell Check:** Click the **Home** tab on the Ribbon and click the **Spelling** button in the Records group.
- **To Find Information:** Place the cursor in the field that contains the value you want to search for, click the **Home** tab on the Ribbon and click the **Find** button in the Find group or press **Ctrl + F**. Type the value you want to search for in the **Find What** box and click **Find Next**.
- **To Replace Information:** Place the cursor in the field that contains the value you want to replace, click the **Home** tab on the Ribbon and click the **Replace** button in the Find group or press **Ctrl + H**. Type the value you want to search for in the **Find What** box and the new value in the **Replace With** box. Click **Find Next** until you've found what you're looking for, then click **Replace** or **Replace All** to replace every instance of the value.
- **To Sort Information:** Place the cursor in the field that you want to sort by, click the Home tab and click either the **Ascending** or **Descending** button in the Sort & Filter group.
- **To Filter Information:** Place the cursor in the field that contains the values you want to filter by, click the **Home** tab on the Ribbon and click the **Filter** button in the Sort & Filter group. Check the boxes for the values you want to filter for.
- **To Remove a Filter:** Click the **Toggle Filter** button in the Sort & Filter group.
- **To Change a Field's Data Type:** Select the field you want to change, click the **Datasheet** tab on the Ribbon, and click the **Data Type** list arrow in the Data Type & Formatting group. Select a data type.

Field Data Types

Data Type	Description
Text (Default)	Stores text, numbers, or a combination of both, up to 255 characters long.
Memo	Stores long text entries—up to 64,000 characters long.
Number	Stores numbers that can be used in calculations.
Date/Time	Stores dates, times, or both.
Currency	Stores numbers and symbols that represent money.
AutoNumber	Automatically fills in a unique number for each record.
Yes/No	Stores only one of two values, such as Yes or No.
OLE Object	Stores objects created in other programs, such as a graphic, Excel spreadsheet, or Word document.
Hyperlink	Stores clickable links to Web pages on the Internet or files on a network.
Lookup Wizard	A wizard that helps you create a field whose values are selected from another table, query, or list of values.
Attachment	Allows you to attach files and images to your database.

Working with Queries

The Design Query Window

To add a field to the query, click and drag it from the table down to the design grid. The queried tables appear here. You can also link tables.

- **To Create a Select Query:** Click the **Create** tab on the Ribbon and click the **Query Wizard** button in the Other group. Click **Simple Query Wizard** and click **OK**. Follow the onscreen instructions to select the fields you want to use from the desired tables and create the query. If you want to filter records, view the query in Design view and enter the criteria in the Criteria row.
- **To Switch Views:** Click the **Home** tab on the Ribbon and click the **View** button in the Views group.
- **To Summarize Values:** Open the Query in Datasheet View, click the **Home** tab on the Ribbon and click the **Totals** button in the Records group. Click the list arrow in a column in the Total row in the query select a calculation type (Sum, Average, etc.).

Criteria Example	Description
"London"	Displays records where the field equals "London."
Between 1/1/00 and 12/31/00	Displays records where the date is between 1/1/00 and 12/31/00.
NOT "USA" or ""	Displays records where the field does not contain the text "USA" and is not blank.
Like "S*"	Displays records where the field text starts with an "S."
IS NULL	Displays records where the field is blank.
IS NOT NULL	Displays records where the field is not blank.
100	Displays records whose field value is greater than 100.

Interactive Training for Over 2,000 Topics:

Office 2016 for Windows

Excel 2016
Outlook 2016
PowerPoint 2016
Word 2016

Office 2016 for Mac

Excel 2016
Outlook 2016
PowerPoint 2016
Word 2016

Office 365

OneDrive for Business
Skype for Business

Office 2013

Excel 2013
OneNote 2013
Outlook 2013
PowerPoint 2013
SharePoint 2013
Word 2013

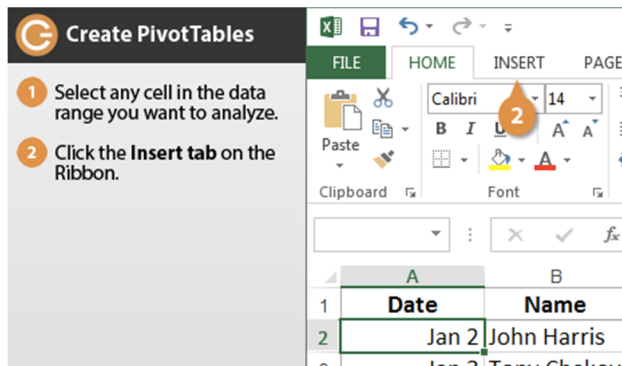
Operating Systems

Windows 10
Windows 8
Windows 7
Computer Basics
Mac OS

Also Available

Soft Skills Courses
Spanish Editions

Each Course Includes:



Interactive Tutorials

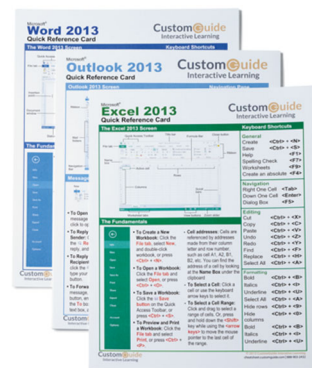
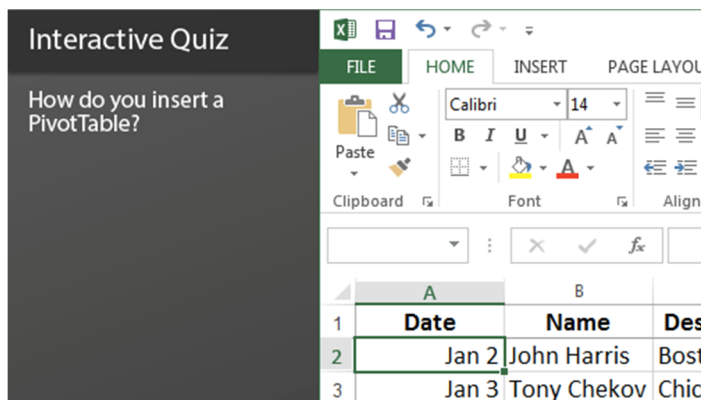
Get hands-on training with bite-sized tutorials that recreate the experience of using actual software. SCORM-compatible for your LMS!

[View Sample](#)

Customizable Courseware

Why write training materials when we've done it for you? Training manuals, practice files, and instructor guides with unlimited printing rights!

[View Sample](#)



Interactive Assessments

How much do your users really know? Accurately measure skills with realistic software simulations. SCORM-compatible for your LMS!

[View Sample](#)

Quick References

Handy "cheat sheets" with shortcuts, tips, and tricks. Free for personal use!

[View Samples](#)

Over 3,000 Companies Rely on CustomGuide

